



Guidebook for Selected Products in Kochi



PUBLIC INTEREST INCORPORATED FOUNDATION
KOCHI INDUSTRIAL PROMOTION CENTER

Greetings

We would like to express our sincere gratitude for your continued support of the promotion of the manufacturing industry in Kochi Prefecture.

Since the launch of the "Kochi Prefecture Industrial Promotion Plan," we have seen positive results, such as improvements in key economic indicators, thanks to efforts like local and external trade initiatives.

However, the prolonged rise in material and price costs and the ongoing shortage of manpower continue to pose significant challenges and have a considerable impact on the prefectural economy.

In this context, to further energize the prefectural economy and ensure sustainable growth, the 5th Kochi Prefecture Industrial Promotion Plan has outlined a comprehensive strengthening of measures to address population decline. It also emphasizes the need for continuous updates to policies from the perspectives of "digitalization," "greening," and "globalization" as part of the evolution of prefectural governance.

At our center, we are fully committed to achieving our goal of "sustainable growth in commerce and industry even amidst population decline," with a focus on our strategic pillars: "accelerating external trade and promoting overseas expansion."

Regarding overseas expansion, in its second year, we are strengthening our support through the "Local Support Desks" established in Thailand and Vietnam. In addition, we are actively supporting companies challenging international markets by expanding their network and sales channels through activities such as holding individual business meetings in Thailand, Vietnam, and Taiwan.

This catalog has been created as part of our efforts to introduce the products of manufacturing companies in Kochi Prefecture to overseas markets.

We hope you will take the time to read it and gain a deeper understanding of Kochi Prefecture's manufacturing companies and their products.

October, 2024

Kochi Industrial Promotion Center
Chairman : **Hideomi Doi**



Introduction of Kochi Prefecture

Kochi Prefecture is broadly facing the Pacific Ocean where the Kuroshio Current washing the coast.

The region is also blessed with the beautiful and affluent assets from the nature with the super-clear streams of the waters represented by Shimanto-river and Niyodo-river, and the very deep green mountains in the north.

The rich nature of Kochi is also an abundant repository of fresh foodstuffs, so “Kochi’s Cuisine” is the big pleasure for the tourists. In fact, the nationwide survey of the major travel agency have repeatedly selected Kochi to be the “Best Choice” in terms of serving many delicious foods special to the local area.

The unique history and the cultural climate of Kochi have produced a large number of predecessors like Ryoma Sakamoto, the leading spirits of the Meiji Restoration at the end of Edo Shogunate.

In summary, the free and dynamic character of Kochi has brought up broad-minded prefectural nature.

The wisdom and the ability of Tosa people with full of ideas have generated a variety of well-considered unique agricultural products as well as industrial technologies.

Lastly but not least, the region has been and will continue developing the local unique cultural events, “Yosakoi-Festival” for example of great individuality.



WIDE VARIETY OF PRODUCTS IN KOCHI PREFECTURE

Traditional Industry

In Kochi Prefecture, the Japanese traditional paper “Tosa Washi” and the dried bonito “Katsuo Bushi” utilizing the regional raw materials and also the technologies and products in the agriculture, forestry and fisheries fields that use countryside, mountain and marine resources have been created since ancient times. Further, under the severe conditions with many steep terrains, the civil engineering technologies for post-disaster restoration have been developed. Original ideas and ingenuity are added to them through the efforts of people concerned to result in birth of new products and technologies still now.



Tosa Washi paper

Boasting a history of one thousand years, the Tosa Washi paper was protected as a major special product of the Tosa Domain and enjoyed its prosperity as a traditional local industry in the Paper Kingdom Tosa during the Edo Period. In recent years, it is highly evaluated both in Japan and abroad as the cultural assets repair material with the records that it is not only used for usual “Shodo” calligraphy or for a framing tool “Hyogu”, but also for repair of artistic collections in the Louvre and other museums.



Tosa forged cutlery

It is said that the history of forged cutlery started at the late Tensho period (in the 1590s). At present, Kochi is known as one of the most popular cutlery manufacturing areas of Japan with the fact that there are some products with the 60% market share in Japan among the cutting tools for forest. And also, for example, kitchen knives and outdoor use knives are highly evaluated and conveniently used in Japanese restaurants and in outdoor fields in Europe and U.S.A.

New Industry

In Kochi Prefecture, there are many good raw materials and excellent human resources that can boast in the world as well as many companies possessing the advanced technology.

In Kochi Prefecture where we have been exposed to typhoons, tsunamis, damage from landslide sediment disasters, etc., we are making the best use of the know-how therefor and promoting the “Disaster-Prevention Industry” for civil engineering and machinery, stockpile products, etc. that are to play active roles in the pre-disaster, in-disaster and disaster-restoration fields etc. to fight against disasters and transmitting them both domestically and to the world.

It is an industrial field particular to the Tosa people who are full of ideas in turning weakness into a strength. In addition, Kochi is the most forested prefecture in Japan, with 84% of the prefecture's land area covered by forests. The forestry industry has been thriving in Kochi for a long time, supplying high-quality lumber, and in recent years, the technology and products of companies in Kochi have been widely exported overseas, including many wood products that incorporate the functionality of lumber grown in Kochi.



Repair work subsidence bridge at Shimanto River



Kumiko Lunch Basket

INDEX

Greetings

Introduction of Kochi Prefecture

WIDE VARIETY OF PRODUCTS IN KOCHI PREFECTURE

INDEX

1

2

4

product name	company	page
INDUSTRIAL MACHINERY AND COMPONENTS		
Compact double head side milling machine CS150	Chuo-Seiki Co., Ltd.	6
Gun-Drilling Machine for Ultra-small Diameter(Equipped high precision built-in spindle motor)MKBG-500-1NC	Miroku Machine Tool, INC.	6
EPSILON Q(SQR-X8)5-Axis CNC Tool Grinder Backfire Back Counterbore Processing Tool	RYOCO SEIKI CO., LTD.	7
Fine bubble diffusers	Sakamoto Giken Corporation	7
Offering well trained and qualified assembling, processing, testing skills for electrical parts.	Tosa Denshi Corporation	8
Cranes used for factories and warehouses	Ueta denki Co., Ltd.	8
Dry Polishing System	Ujiden Chemical Industry Co., Ltd.	9
Double-head Side Milling Machine WH480A, 530A	Wada Kikai Co., Ltd.	9
YZ-8WR Numerically-Controlled Vertical Milling Machines	YAMASAKI GIKEN CO., LTD.	10
AGRICULTURAL MACHINERY		
Cultivator "Saisaku"	Sasaoka Co., Ltd.	10
VF800 vegetable bagger	Taiyo Co., Ltd.(E&A division)	11
KIREI Stainless Steel Duckboard	U-CHIKA CO., LTD.	11
CIVIL ENGINEERING MACHINERY		
Hydraulic Eco-Cutter	IIDA Tekko Co., Ltd.	12
SAIBARA-10:Unit-type Concrete Molding Machine	Saibara Iron Works Co., Ltd.	12
Human and Eco-friendly Powerful Crane	SKK Corporation	13
CONCRETE PUMP 160-40-8	SYMTEC CO., LTD.	13
Man-portable in-ground concrete forms	Tamtec Co., Ltd.	14
Marine Crane	TSUKASA JUKI Co.Ltd.	14
ENVIRONMENTAL AND BIOMASS MACHINERY		
Biomass Eco Burner	AKATSUKI INDUSTRIAL CO., LTD	15
Wastewater treatment system for highly concentrated sewage(Touchstone System)	Aqua System Co., Ltd.	15
"RYUZOKUN" twin-die pelletizing machine	KAKIUCHI CO., LTD.	16
Power Suction Work Truck	KANEMATSU ENGINEERING CO., LTD.	16
Kowa Clean 20C electrolysis equipment for generating acidic Electrolyzed water	KOWATEC Co., Ltd.	17
Tanrei(Self-Combusting Rotary Organic Continuous Carbonization Device)	Soil Farm Co., Ltd.	17
Ligneous Pellet Manufacturing Machine	Tosatech Co., Ltd.	18
OTHER MACHINERY		
MAREWA-SYSTEM Ship Engine Remote Monitoring System	KAGOO CO.,LTD. KAGOO DOCYARD	18
Auto weighing & packaging system	Mitsuwa Sangyo Co., Ltd.	19
Internet automated feeding system "ESA ROBO"	Pacific Software Development Co., Ltd.	19
PTM-F1 fully-automated non-stop wet-wipe folding machine	Shinwa Giken Co., Ltd.	20
DISASTER PREVENTION PRODUCT		
Sea Aqua Disaster-Relief Water Purification Device, Seawater-Compatible Model	Aqua Design System Co., Ltd	20
Geo Drain SPD method for soft ground improvement	CHIKAMI MILTEC INC.	21
"α-Shine Plate" Ultra-High Luminance Photoluminescent Emergency Exit Sign	DAISEN Co., Ltd.	21
SILENT PILER™	GIKEN LTD. Tokyo Head Office	22
Emergency Backpack "Kuroshio"	Interest-Production	22
Genkidayo Safety Notification System	IT PRODUCT CO., LTD.	23
Foliage Plant with Emergency Kit	Iwaya Co., Ltd.	23
Amphibious Excavator	Kochi Marutaka Co., Ltd.	24
NS Net(Deteriorate Concrete Prevention Net)	Nishinomiya Sangyo Co., Ltd.	24
Flood Monitor Water Disaster Monitoring System	OSASI Technos, Inc.	25
Disaster Relief Toilet 2-way Daichi-kun	Shikoku Joka Co., Ltd.	25
LED solar security light with seismic sensed auto-unlock key box and evacuation shelter sign board	SHIMA INDUSTRIES CO., LTD.	26
Guardian Prefabricated Large Block	Shimanto Concrete Co., Ltd.	26
Ostream-1 High-performance, Ultra-compact Turgo Turbine Generator	SKY ELECTRONICS CO., LTD.	27

product name	company	page
Blue Sea Silt Fence	Takashina Life Preservers Co., Ltd.	27
Hyakusanchin Tofu Bean Curd Jerky(Emergency Food)	Tanaka Shoku Co., Ltd.	28
PALA Lead Pipe Solar Guide Light	Tosatsushin Co., Ltd.	28
Special Elastic Rubber TS Seal	TS-Seal Co., Ltd.	29
Easy Stretcher	Yoshimura Denso Co., Ltd.	29
PAPERMAKING		
Bleaching Paper Hairdressing Supplies	FUJI PAPER CHEMICAL CO., LTD.	30
Lira Single toilet rolls(60 per case) , Lira Double toilet rolls(60 per case)	HAYASHI COMPANY, LIMITED	30
TOSAWASHI(TENGUJO PAPER) Japanese paper	HIDAKA WASHI CO., LTD.	31
Nanofiber Nonwoven Fabrics	Hirose Paper Mfg. Co.,Ltd.	31
Rurikon Tosa Washi Paper Coffee Filter	Inoue Corporation	32
Avonlea Keith moisturizing paper	Kawano paper Co., Ltd.	32
Cotton Wiping Towel	MINIPACK CO., LTD.	33
Kamination File Washi Paper-Covered Clear File	MORISA CO., LTD.	33
Create Original Goods	Motoyama Printing.co.ltd Paper message Department.	34
Four-sided untrimmed adhesive label	NAIGAI TENGUJO PAPER CO.,LTD	34
BIKATSU COOKING	Sansai Co., Ltd.	35
"MY WET" sanitizing sheets	Sansho Shigyo Co., Ltd.	35
SUN MORE NA(ULTRA-FINE ACRYLIC NON-WOVEN FABRIC:FOR WIPING)	Sanwaseishi Co., Ltd.	36
Adsorption sheet "Type FK"	Techno Hirose Co., Ltd.	36
Maximum size, maximum absorbency urine pad 1800	TOYOTOKUSHI CO., LTD.	37
PAPER WASTE	Wako Paper Co., Ltd.	37
WOOD PRODUCTS		
Japanese Laminated Bamboo Board and Veneer	COSUMO KOBO Co. Ltd.	38
monacca	ECOASU UMAJIMURA CO., LTD.	38
HINOKI WOODEN CHIPS	GROWING	39
"Nandemo Noruzo"(Heavy staff loadable)	Ikegawa Mokuzai Kogyo Co., Ltd.	39
High Class Novelty Made of Natural Wood	Miroku Technowood Co., Ltd.	40
Wood wool, essential oil	Toda Shoko Incorporated	40
KUMIKO LOAD BEARING WALL	TOSA KUMIKO Co., Ltd.	41
JAPANESE SPA	TOSARYU Co., Ltd.	41
OTHER PRODUCT		
HiTOKi Gold Stretch Eye Mask	Amenity Company, Limited	42
DEEPLINER Mega Spindle	DEEPARS FACTORY CORPORATION	42
Mass Flow Controller/Gas Mixer	FCON CO., LTD.	43
Kochi Essential Oil	KOCHI FORESTVISION Corporation	43
Organic Bedding	Heart Co., Ltd.	44
Sakon&Tosa-Ichi, leading knife brands in Kochi	Hokiyama Cutlery Co., Ltd.	44
IC Bordeaux(Copper fungicide)	Inoue Calcium Corporation	45
Red coral praying beads	Kensen35 CO., LTD.	45
PAN OISHIIMAMA(Keep Bread Delicious)	KINOUSOZAI Company,Limited	46
Repellent Spray against Hornets	KINP CO., LTD.(Kuroshio Institute of Natural Product chemistry)	46
Shoyaku No Meguriyu(Crude Drug Beauty Bath Powder)	Matsuda Pharmaceuticals CO., LTD.	47
3D Figure Modeling	m.e.works inc.	47
Fish Leather Products	Ocean Leather/KO-YO-FREEZE CO., LTD.	48
Jewelry Box	Rdesignstyle	48
TOSA santok forged knives(Nickel Damascus steel 33 layer VG10)	Toyokuni Co., Ltd.	49
Gensuke Clean	Ueta LABO Co., Ltd.	49
Precious Metal Evaporation Deposition Materials(for pellets or shots)	YAMAKIN CO., LTD.	50



Kochi SDGs promoting companies (as of the end of Oct, 2024)

Kochi Prefecture registers companies that are making efforts to achieve the SDGs.

Compact double head side milling machine CS150



Ideal for 4-sided and 6-sided machining of mold bases and block nesting materials.



Its easy control; the automatic operation contributes to cost reduction; and it is adaptable to high-mix, low-volume applications. It reduces idle time with its agility from small sizes.

The compact design takes installation space into consideration.

It has safe design and full cover specifications.

Underside surface deburring and coolant for cutting are standard features.



✓ Delivery Records

- Major plate manufacturers in Japan and overseas
- CS Series: December 1997 to April 2024, 270 units

📖 Other Information

- CS150 / width 7mm to 150mm, length 7mm to 150mm, height 3mm to 70mm
- CS300 II / width 15mm to 300mm, length 15mm to 300mm, height 5mm to 140mm

Chuo-Seiki Co., Ltd.

☎ +81-88-845-1373 📠 +81-88-845-9001

📍 1-8-37 Ikkinamimachi, Kochi-shi, Kochi Prefecture 781-8135, Japan

🌐 <https://www.chuo-seiki.co.jp>

✉ nakano@chuo-seiki.co.jp

Gun-Drilling Machine for Ultra-small Diameter (Equipped high precision built-in spindle motor) MKBG-500-1NC



Gun-drilling machine that enabled ultra-small deep hole drilling

Achieved high accuracy and rigidity by adopting a built-in spindle motor drive system that integrates the components of the spindle motor into the spindle system.

Improved reliability enables ultra-small deep hole drilling of 1mm or less at 20000 revolutions per minute spindle speed.

- Achieved high rigidity specifications, due to heat and vibration resistant design at high-speed rotation.
- High-precision machining is possible at high speed condition by rotating both the workpiece and the gun-drilling tool.
- The gun-drilling machine enables discharging debris which caused by ultra-small diameter machining smoothly, by setting the maximum discharge pressure from the drill as 20Mpa.



✓ Delivery Records

Automotive parts machining, mold machining, hydraulic machinery parts machining, aircraft industry parts machining, electrical and electronics industry parts machining

📖 Other Information

Kochi Prefecture Local Industry Award, 2020
Main specifications : Machining diameter 0.9 to 5mm,
Maximum machining length : 500mm
Workpiece rotation device
(workpiece gripping range ϕ 1 to ϕ 75)

Miroku Machine Tool, INC.

☎ +81-88-862-1136 📠 +81-88-862-2898

📍 836 Hie, Nankoku-shi, Kochi Prefecture 783-0054, Japan

🌐 <https://www.miroku-gd.co.jp/en/>

✉ kochi@miroku-gd.co.jp

EPSILON Q (SQR-X8) 5-Axis CNC Tool Grinder Backfire Back Counterbore Processing Tool



Making tool resharping even easier (tool grinder)

Achieves greater stability in cutting with carbide body + oil hole

5-axis CNC tool grinder EPSILON Q (SQR-X8)

1. Compatible with a wide variety of tool shapes
2. Fully automatic sensing system
3. Interactive and easy data setting
4. Space saving and free layout
5. Automatic sludge disposal system



✓ Delivery Records

Users of cutting tools in Japan and overseas

📖 Other Information

Compact body, easy tool resharping for anyone
On sale now!

Backfire Back Counterbore Processing Tool

1. Robust body
2. Eccentric-type tool
3. New design insert (D10, D12 Series)
4. Oil hole adoption (D10 and above)



✓ Delivery Records

Cutting processing users both domestically and internationally

📖 Other Information

SUS processing and detailed information are available on the website and catalog. Special requests can also be accommodated.

RYOCO SEIKI CO.,LTD.

☎ +81-889-59-1220 🏠 +81-889-59-1222

📍 1015 Yoshino Onomi, Nakatosha-cho, Takaoka-gun, Kochi Prefecture, 789-1401, Japan

🌐 <http://www.ryoco.co.jp/>

✉ ryocoseiki@ryoco.co.jp

Fine bubble diffusers



High-quality micro-bubbles (fine bubbles) are produced by mixing a liquid (such as water) with a gas (such as air)



Fine bubbles (micro-bubbles) - very small bubbles with a diameter of 100μm or less - have a variety of applications, including water purification, sewage treatment, and boosting dissolved oxygen. The fine bubble diffuser developed by Sakamoto Giken in cooperation with the Kōchi College of the National Institute of Technology:

- Can handle high flow levels (compliant with JIS 15A-50A)
- Will operate so long as it has a pressurized water source
- Is compact and can be added to existing water supplies without taking up too much space
- Has no moving parts
- Requires little long-term maintenance



Fine bubble diffuser



Fine bubbles being generated in water



Easy to install

✓ Delivery Records

Customers include Kōchi aquatic products producers, farmers, and water treatment professionals



Sakamoto Giken Corporation

☎ +81-88-864-4277 🏠 +81-88-864-4279

📍 898-25 Myoken, Nankoku-shi, Kochi Prefecture 783-0007, Japan

🌐 <https://www.sakamotogiken.com/>

✉ fb@sakamotogiken.com

Offering well trained and qualified assembling, processing, testing skills for electrical parts.



Reliable manufacturing skills for both prototype production and mass production.

■ OUR BUSINESS

Custom processing of circuit boards & control panels.
Assembly of electrical parts and circuit boards, various devices and integrated performance tests, such as LCD.
Outsourced production of various parts and devices in Vietnam.
R&D function and sales of newly invented products.

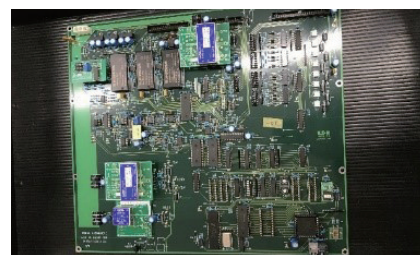
■ WE OFFER

SOLDERING: Reliable and proficient soldering technology. We implement the soldering skill certification system by advanced micro soldering certifier.

SMT: Small, Large, Atypical Parts, High-density Parts mounting technology such as 0402 chip and BGA.

PROCESSING & ASSEMBLING: High mix and small volume production with dustproof clean rooms and clean benches. (Clean room area: 1075m² in total)

INSPECTION: Microscope and visual inspection (certification system), inspection for circuit (ICT), power (FC). Polarity and solder inspection by image inspection device.



Tosa Denshi Corporation

+81-88-850-2600 +81-88-850-2601

61-10 Takaoka-cho Otsu, Tosa-shi, Kochi Prefecture 781-1102, Japan

<https://www.tosadenshi.co.jp/>

info@tosadenshi.co.jp

Cranes used for factories and warehouses



Prevent machinery malfunction with automatic remote control system!

- ① "High quality and quick delivery crane" manufactured with crane automatic welding system.
- ② Automatic cargo swing control function for "safe, comfortable, and swift transporting of cargo"
- ③ "Breakdown-proof industrial machinery" with automatic maintenance and control system using IoT.

☑ Delivery Records

Various industrial machinery makers, etc.

📖 Other Information

For over 30 years, we've worked with crane operators.
By combining our expertise with the latest technology, we've developed the only crane you'll ever need again.
We'll continue to design "cranes anyone can operate easily and speedily" under our motto, "Less time on the crane means more time for productivity".



Ueta denki Co., Ltd.

+81-88-841-1709 +81-88-841-1466

2-13-43 Seto, Kochi-shi, Kochi Prefecture 781-0250, Japan

<https://ueta-denki.com/>

uetadenki@ebony.plata.or.jp

Dry Polishing System



Clean dry polishing system, able to execute operations from rough polishing to mirror polishing

The TOSALIT DR series comprises dry polishing media for dry barrel polishing process without using water. This makes it possible to downsize wastewater treating equipment and enhance polishing workability. Environmental burden to rivers etc. by wastewater may be reduced through employment of a dry polishing process, thus making it possible to implement the environmentally friendly production process. With abundant media sizes and polishing machines made available so that operations from rough polishing such as deburring to mirror polishing may be handled, we propose a polishing system to meet your needs, from both aspects of dry polishing machines and dry media.



Delivery Records

- High-energy centrifugal barrel: DC-1000, DC-800 and DC-400 To manufacturers of golf equipment, musical instruments, wrist watches and medical metal fittings; the dental industry; and others.
- Centrifugal Disc system: DR-130 and DR-50 To manufacturers of forgings, pressed parts, automobile components, faucets, etc.

Other Information

- High energy Centrifugal barrel lineup DC-1200, -1000, -800, -400; Models DCB1200, -1000
- Centrifugal disc system lineup Models DR-230, -130, -50 We propose the most suitable polishing machine and abrasive for the purpose of polishing. Contact Mr. Tanaka of the Sales and Marketing Department for inquiry.

Ujiden Chemical Industry Co., Ltd.

+81-88-832-6162 +81-88-832-6165

5-7-34, Sanbashi-dori, Kochi-shi, Kochi Prefecture 781-8010, Japan
<https://www.ujiden-net.co.jp/en/>
tosa@ujiden-net.co.jp

Double-head Side Milling Machine WH480A, 530A



WH series models—now easier to use for small to large sizes



- Minimum working size: 5 (H) × 10 (W) × 50 (L) mm
- Maximum working size: 150 (H) × 535 (W) × 535 (L) mm
- High-precision and high-speed multi-face machining with high output and high rigidity!
- High-precision heavy cutting is possible based on trust as a long-lasting and stable mass-production machine made of heavy base castings.
- Parallelism is secured with movement of the table between opposing main shafts.
- Optimum for small-volume production in large varieties.
- Vertical and right-angle corrector for the clamping device.
- 3-speaker curvic coupling on the index table.
- One-touch input of material dimensions for offline setup during works. (OP)



Delivery Records

- In Japan: Daido Kogyo Co., Ltd., Daido Amistar Co., Ltd., Fujimaki Steel Co., Ltd., Union Plate Co., Ltd., Ochi Co., Ltd., Yugengaisha Kittou, HCP Product, Ltd., etc.
- Abroad: Korea, France, China and Thailand

Other Information

For detailed information, refer to our Website. Concerning your company's "We wish we had...!! ⇒ Special purpose machine tool", contact us each time.



Wada Kikai Co., Ltd.

+81-88-846-4848 +81-88-846-4849

249-1 Kureno, Kochi -shi, Kochi Prefecture 780-0001, Japan
<https://www.wadakikai.com/>
machine@wadakikai.com

YZ-8WR Numerically-Controlled Vertical Milling Machine



Next-generation all-purpose milling machine that reduces setup time for multi-variety and small-batch processing

Combining a mechanically-assisted manual Z-axis handle and a rack-and-pinion spindle feed mechanism for comfortable manual operation with a design that can't be beat in terms of ease-of-use and letting you get close to your work, the YZ-8WR, our flagship product, lets you power quickly through piecework. The handles, levers, and switches are located in just the right spots to make the machine act as an extension of your body, letting you work for long hours without stress. While still a manually-operated two-axis machine, the YZ-8WR features a "Machining guidance function" that can be instantly engaged by switching it on and entering some numbers, taking the guess-work out of milling curves, diagonals, pockets, and the like.

✓ Delivery Records

Customers include equipment and parts manufacturers and machinists, as well as manufacturers, governments, and technical-vocational schools nationwide.

📖 Other Information

Demonstrators are installed in showrooms in our Saitama, Nagoya, and Osaka offices, where they can be viewed by appointment. We are also always ready to welcome visitors to our factory.

YZ-8WR Machine Specifications	
Table Size	1400 × 400mm
Travel (X × Y × Z)	850 × 400 × 520mm
Spindle Speed	55 ~ 2000min ⁻¹
Tapered Bore	7/24 Taper ISO No.50
Rapid Traverse Rate	6000mm/min
Spindle Motor	3.7kw
Floor Space Requirement(W × D × H)	2950 × 1870 × 2499
Machine Weight	Approx. 3700kg



YAMASAKI GIKEN CO., LTD.

☎ +81-887-57-6222 📠 +81-887-57-6223

📍 Techno Park2, Tosayamada-cho, Kami-shi, Kochi Prefecture 782-0010, Japan
 🌐 <https://www.yamasakigiken.co.jp/>
 ✉ yzinfo@yamasakigiken.co.jp

Cultivator "Saisaku"



Saisaku is the legendary cultivator of the famous and successful "Suzue" machine.

It's equipped with the normal/reverse rotary shaft drive mechanism for high utility with minimal power loss. Select from 10 different rotary speeds according to the task, soil quality, and field conditions. It's suitable for a variety of uses, from high-speed to low-speed. The handle features an emergency switch that can stop the engine with a single press. The handle can be manually adjusted between 4 different heights. The main clutch lever has a mechanism that can be turned on and off while holding the handle, which makes it easy to operate. We have wide range of attachments designed for diverse vegetable production, such as our unique multi-groove ditching machine suitable for planting ginger and lilies.



Sasaoka Rotary Tiller
SRT シリーズ



✓ Delivery Records

JA ZEN-NOH Kochi Dealership

Sasaoka Co.,Ltd.

☎ +81-889-49-0341 📠 +81-889-49-0744

📍 717 Tachime, Uranouchi, Susaki-shi, Kochi Prefecture 785-0164, Japan
 🌐 <https://www.k-sasaoka.co.jp/>
 ✉ grc-g@k-sasaoka.co.jp

VF800 vegetable bagger



Bag soft vegetables—spinach, komatsuna, chrysanthemum leaves, mizuna, shungiku—at high speed

- Unparalleled work speed(actual speed 600 bags/hour)
- Noise-dampening optimized for indoor installations
- A built-in vacuum pump for reliable bag handling
- Wet vegetables can be bagged without drying
- Bag size can be adjusted at the touch of a button, without need for tools

✓ Delivery Records

Over 850 units (including the earlier VF700 model) to sold in 45 Prefectures nationwide

📖 Other Information

Compatible bag sizes

Width: 180–280 mm

Length: 280–450 mm (rectangular or trapezoidal)

Sold through JA and makers of agricultural equipment and packaging materials



Taiyo Co., Ltd. (E&A division)

☎ +81-88-846-1230 🏠 +81-88-846-4470

📍 3950 Nunoshida, Kochi-shi, Kochi Prefecture 781-5101, Japan

🌐 <https://www.k-taiyo.co.jp/en/>

✉ kankyou@k-taiyo.co.jp

KIREI Stainless Steel Duckboard



Truly lightweight and strong! Smooth pig development like a new swinery!

- Quick and clean dropping of feces
- Stainless steel that does not soak up pathogens
- Almost no sticking of feces
- Only a small amount of water is needed for cleaning!
- Light weight and fully interlocking mechanism
- Super easy to install, much less labor required
- Disease prevention is the biggest benefit

✓ Delivery Records

Haruno Corporation, Kimura Nousan Shoji, Ichikura Shoji, Japan Trading Corporation, JA Minamisatsuma Agricultural Cooperative

📖 Other Information

Series products available in lengths ranging from 1.2m to 2.3m : other options are negotiable

Product weight ranges from 6.3kg to 11.6kg

Basic widths: 340mm for piglets, 360mm for fattening



U-CHIKA CO.,LTD.

☎ +81-887-38-5508 🏠 +81-887-38-4346

📍 448-7 Naharicho Otsu, Aki-gun, Kochi Prefecture 781-6402, Japan

🌐 <https://www.u-chika.com/>

✉ ton55@ma.pikara.ne.jp

Hydraulic Eco-Cutter



Cutting and splitting industrial waste such as waste plastic, vinyl, tires, and wood

Eco Cutter is a powerful industrial waste treatment machine for cutting wastes such as plastic, vinyl, tires, and wood. It is equipped with excellent mechanisms such as an inverted V-shaped cutter structure, four-sided rotating cutter blades, and a cutter blade adjustment mechanism.

The hydraulic type in particular can tilt (oscillate) at a wide angle, making it easy to grab objects from low positions or from piles of waste. It can also be used for feeding into a crusher after cutting, greatly improving work efficiency. In addition, there is less stress on the shovel arm during cutting, and maintenance costs can be reduced after installation.

The Eco Cutter was born from an idea from the field, and has been widely used and well received at industrial waste disposal sites throughout Japan.

✓ Delivery Records

The product has been delivered to industrial waste treatment plants throughout Japan through excavator manufacturers and trading companies.

📖 Other Information

- Target excavators: 6 tons to 22 tons (0.25m³ to 0.8m³)
- A demo unit is available for trials.



IIDA Tekko Co.,Ltd.

☎ +81-88-842-2496 📠 +81-88-842-2498

📍 3111-2 Nagahama, Kochi-shi, Kochi Prefecture 781-0270, Japan

🌐 <https://kk-iida.com/>

✉ eigyo@kk-iida.com

SAIBARA-10: Unit-type Concrete Molding Machine



Unit-type concrete molding machine having “high function”, “high quality” and “low price” realized.



- Because the product is manufactured consistently in the factory and shipped as a completed form of product, it is possible to supply the product with high quality and at a low price.
- Because the product is unit type, loading, transportation and installation is easy. It is possible to start operation with the product soon after the product is arrived and installed.
- Because concrete supply devices are not required, it makes it possible to reduce the cost dramatically.

✓ Delivery Records

Domestic: Concrete product manufacturing plants in all areas of the country
Overseas: China and Taiwan (expanding sales channels in Southeast Asia)

📖 Other Information

We accept orders to produce products to meet customer's requests. We are expanding our business domestically and abroad. Registered product for disaster prevention under Kochi Prefecture (2018 Kochi Bosai No.7)



Saibara Iron Works Co., Ltd.

☎ +81-88-852-1188 📠 +81-88-852-5254

📍 895 Takaoka-cho Kou, Tosa-shi, Kochi Prefecture 781-1101, Japan

🌐 <https://www.saibara-iron.co.jp/en/>

✉ saibara@peace.ocn.ne.jp

Human and Eco-friendly Powerful Crane



Next-generation crane for environmental and efficient operations



In port and harbor civil engineering work, there are many jobs to protect the safety and security of people's lives, such as dredging to clear a path for ships by dredging with a grab bucket and installing breakwaters and wave dissipating blocks to prevent tsunamis and other natural disasters. Since our company founded, we have been manufacturing full-slewing cranes that play an active role in port and harbor civil engineering works. We have developed a new environment-friendly hybrid grab dredging crane that aims to improve fuel efficiency. This crane reduces fuel consumption and exhaust gas emissions by using the energy generated during the lowering of the grab bucket during dredging operations to assist use while hoisting.

✓ Delivery Records

The company has delivered a total of over 5,000 SKK cranes to marine contractors nationwide and also has experience exporting to Asia and other regions.

📖 Other Information

Model: SKK-1600GE
Type: Electric-Driven Grab Dredging Crane
P.L: 30 m³ (Medium Type)
Boom Length: 32 m
Dredging Depth: Maximum 85 m below the water level



SKK Corporation

☎ +81-88-842-6262 🏠 +81-88-842-4023

📍 1-3 Yokohama-Nishimachi, Kochi-shi, Kochi Prefecture 781-0242, Japan
🌐 <https://www.skk-crane.co.jp/en/>
✉ sales@skk-crane.co.jp

CONCRETE PUMP 160-40-8



Small, durable, powerful, high suction efficiency, smooth pressure feed

The product is a concrete pump with the strongest performance condensed into the smallest package. It is equipped with an ideal pumping mechanism that enables the pumping of low-slump ready-mixed concrete (slump of 8cm, maximum aggregate size of 40mm) and the horizontal pumping of ordinary ready-mixed concrete for 800 m. It can pump high viscosity materials, mud, water, mortar, and light or heavy concrete. In addition to concrete pumping and spraying in the civil engineering field (for tunnels, dams, bridges, retaining walls, landslides, steel tower foundations, slopes, deep foundation piles, etc.), the product has a wide range of applications in the industrial field, including pumping and spraying of castables (amorphous refractory), pumping of ground improvement materials (liquefaction countermeasures, etc.), and pumping of mud and sludge.

✓ Delivery Records

Construction companies across Japan including Obayashi Corporation, Kajima Corporation, Shimizu Corporation, and Taisei Corporation
Steel companies such as Nippon Steel Corporation and JFE Steel Corporation

📖 Other Information

Our company is a manufacturer of concrete pumps and we also rent our own machines. Full after-sales support is available.



SP-70CB



SP-35E II



SP-60E

SYMTEC CO.,LTD.

☎ +81-88-883-1755 🏠 +81-88-883-1754

📍 2-6-23 ikkuminamimachi, Kochi-shi, Kochi Prefecture 781-8135, Japan
🌐 <https://www.symtec.co.jp/>
✉ info@symtec.co.jp

INDUSTRIAL
MACHINERY

AGRICULTURAL
MACHINERY

CIVIL
ENGINEERING
MACHINERY

ENVIRONMENTAL
AND BIOMASS
MACHINERY

OTHER
MACHINERY

DISASTER
PREVENTION
PRODUCT

PAPERMAKING

WOOD
PRODUCTS

OTHER
PRODUCT

Man-portable in-ground concrete forms



Light, sturdy, adhesive forms that adhere well to concrete

Light, thin, and with high flexural strength and rigidity for use as joint forms, this in-ground formwork can be installed by manual- power alone, without heavy machinery. Cutting is easy, reducing construction time and cost. Products can also serve as in-ground forms for constructing drain (culvert) covers.



In-ground concrete drain-covers

☑ Delivery Records

Used in over 1,650 locations nationwide, primarily for erosion control and landslide prevention projects including improvements, landslide barriers, and retaining walls

📖 Other Information

Registered with the Ministry of Land, Infrastructure, Transport and Tourism NETIS database



In-ground forms used as a substitute for wooden joint forms

Tamtec Co., Ltd.

☎ +81-889-42-2405 📠 +81-889-42-2460

📍 5510 Oonogo kou, Susaki-shi, Kochi Prefecture 785-0030, Japan

🌐 <https://tamtec.jp/>

✉ office@tamtec.jp

Marine Crane



TSUKASA TECHNOLOGY has great performance on the ocean.
-Has been developed with our On-site user-

Marine crane, that handling gravel, stone and crashed stone is necessary for ocean public works.

We have developed two systems for handling bucket on marine crane. High power "LGP" series, and Electronic-Pneumatic control "EP" series.

High-Power system [LGP-Series]

Our original "Cam" system controls the valves.

And Lever input is multiplied by Pneumatic power.

Therefore, although Lever control feeling is light and smooth, machine makes high power.

And braking system with "P1" valve achieves clear feeling at lever control.

Electronic-Pneumatic system [EP-Series]

Computer controls complicated bucket handling works.

So, operator can control the crane with compact joystick handle.

This system makes possible to more easy, comfortable and safer operation.

Operator can acquire operating method in shorter period.

☑ Delivery Records

Totally about 840 units since 1984. Delivery destinations: All Japan



Driving seat for LGP series (with 4 levers)



Driving seat for EP series (with 2 levers)



TSUKASA JUKI Co.Ltd.

☎ +81-88-842-2221 📠 +81-88-842-2224

📍 5033-21 Nagahama, Kochi -shi, Kochi Prefecture 781-0270, Japan

🌐 <https://www.tsukasa-juki.com/>

✉ entrance@tsukasa-juki.com

Biomass Eco Burner



Contributing to the global environment and regional economy through woody biomass fuel

This is a burner fueled by sawdust. The combustion method entails generating a swirling flow of air in a combustion chamber heated by a heavy oil burner for ignition, and increasing the contact area with the air by spraying and scattering sawdust to increase combustion efficiency. Once stable combustion conditions are achieved, the supply of heavy oil is stopped, and sawdust alone is used to create a chain reaction of combustion. The electric control automatically adjusts the amount of air for combustion and the amount of sawdust according to the temperature in the combustion chamber to ensure optimal combustion conditions. The system can automatically operate intermittently, burning and shutting down, according to signals from connected devices (such as boilers and dryers) to cope with rapid temperature changes. We have delivered models ranging from 200,000 kcal/h to 1,650,000 kcal/h, and high output of 2,000,000 kcal/h is also possible.

✓ Delivery Records

House heating systems for agriculture, heating systems for eel farming, fuel conversion systems for construction waste, coffee lees drying systems, in-house sawdust drying systems, total of 15 units

📖 Other Information

Biomass eco-burner installation and use conditions

- It should be possible to procure sawdust fuel.
- For sawdust procurement, sawdust and lumber from a lumber mill are ground into sawdust using a sawdust mill.
- Use sawdust fuel that has been dried to a moisture content of 10% or less.



AKATSUKI INDUSTRIAL CO., LTD

☎ +81-887-57-1831 🏠 +81-887-57-1836

📍 301-1 Furukawa, Yoshikawa-cho, Konan-shi, Kochi Prefecture 781-5242, Japan

🌐 <https://k-akatsuki.co.jp>

✉ office@k-akatsuki.co.jp

Wastewater treatment system for highly concentrated sewage (Touchstone System)



We will contribute to the development of environmental technology for a clean global environment.

Our touchstone system is a highly efficient method for treating organic wastewater and is superior in terms of running costs. The main features of the system include: a) a highly efficient oxygen supply by aeration of the contact material, which is mainly made of natural volcanic ash and andosol, b) air bubbles rising directly between the filter media, which prevents clogging of the filter media, the biggest drawback of contact oxidation, c) ease of attaching a biological film to natural silicon dioxide, enabling highly efficient treatment, and d) a high self-digestion rate by various microorganisms, resulting in about half the amount of sludge generated compared to the conventional standard activated sludge method.

✓ Delivery Records

Food manufacturing industry in general, food-related raw material processing plants, slaughtering and butchering plants, paper mills, dyeing plants, etc.



Aqua System Co., Ltd.

☎ +81-88-843-3666 🏠 +81-88-843-3669

📍 5-17 Harigi-minami, Kochi-shi, Kochi Prefecture 780-8089, Japan

🌐 <http://www.aqua-water.jp/>

✉ aqua-o@axel.ocn.ne.jp

“RYUZOKUN” twin-die pelletizing machine



Environment friendly resource recycling technology for pelletizing organic fertilizer, etc.

The “RYUZOKUN” twin-die pelletizing machine’s product features :

- Best seller for poultry farmers
- Simple structure that is extremely durable with minimal breakdowns
- Low-temperature granulation process which reduces crushing of raw materials and keeps microbial bacteria and enzymes. These are essential for high-quality biofertilizers, active in the pellets.
- Adapted for automatic operation with low running costs, including low power consumption
- Extremely cost-effective compared with other granulators.

✓ Delivery Records

- Over 360 units sold
- Customers including poultry, cattle, and pig farmers as well as composting centers, and municipal sludge regeneration processors both in Japan and overseas.
- Partnered up with JICA to participate in technology dissemination demonstration projects for livestock farmers in Thailand.

📖 Other Information

KAKIUCHI also conducts pelletizing tests using actual materials, so please feel free to contact us.

Recipient of the 7th Monodzukuri Nippon Grand Award, Shikoku Bureau of Economy, Trade and Industry Director’s Award.



KAKIUCHI CO., LTD.

☎ +81-88-866-2848 📠 +81-88-866-0261

📍 391-8 Nakajima Oko-cho, Nankoku-shi, Kochi Prefecture 783-0049, Japan
🌐 <https://www.kk-kakiuchi.co.jp/>
✉ info@kk-kakiuchi.co.jp

Power Suction Work Truck



As Japan’s top manufacturer, we are constantly pursuing the ideal design for the power suction work truck. We meet user needs with a wide range of models, so the user can select the optimal vehicle that suits the intended usage conditions.



Power Suction Work Truck is a high-performance suction truck that applies powerful suction for solids and liquids, and it is capable of suctioning for a depth of about 30m and a distance of more than 100m.

It is mainly used for suctioning dirt or sludge at construction sites or sewer cleaning sites, and when disaster such as earthquake or flood happens, it is also actively used for recovery work.

✓ Sales

In Japan: Approx. 520 units in 2023

Customer: Industrial waste disposal company, Steel manufacturing company, Electric power company, Shipbuilding company, MLIT, NEXCO, municipalities

Overseas : Total 257 units from 1976 to 2023

We have sales records all over the world, mainly in Asian countries.

📖 Other Information

Power Suction Work Truck

Flow rate: 10-120 m³ /min.

Vacuum pressure: -96kPa (-720mmHg)

Tank volume: 3-10 m³ (Differs according to the chassis size)



KANEMATSU ENGINEERING CO., LTD.

☎ +81-88-845-5511 📠 +81-88-845-5211

📍 3981-7, Nunoshida, Kochi-shi, Kochi Prefecture 781-5101, Japan
🌐 <https://www.kanematsu-eng.jp/english/>
✉ kaigai@kanematsu-eng.jp

Kowa Clean 20C electrolysis equipment for generating acidic Electrolyzed water



Electrolyzed water is a disinfectant approved by the Ministry of Health, Labor and Welfare as a hypochlorous acid solution for use as a food additive.

The Kowa Clean 20C generates hypochlorous acid (HClO, a weak acid) through the electrolysis of a solution of electrolytic fluid and tap water. Hypochlorous acid, a disinfectant approved for use as a food additive, can be used as a sterile disinfectant in food processing plants or the shared kitchens where school lunches are prepared. The product can also be used in social welfare facilities as a means of hygiene management to prevent infection. With the addition of an optional disaster-relief kit, it can quickly be converted for use preventing the spread of infection at evacuation centers in the event of natural disasters.



✓ Delivery Records

Many units have been purchased by hospitals, dental clinics, medical centers, nursery schools, daycares, and food-preparation facilities.

📖 Other Information

Type: Direct connection to the water mains (wall mounted)
Weight: 2.8kg
Dimensions (W×D×H, mm) : 270×80×270,
Output : 2.0ℓ /minute
Effective chlorine concentration : 10–40 ppm, pH 5.0–6.5
Price : Open
Currently recruiting resellers!

KOWATEC Co., Ltd.

☎ +81-88-804-6080 🏠 +81-88-804-6081

📍 2040-1 Wakamiya Otsu, Tamura, Nankoku-shi, Kochi Prefecture 783-0092, Japan
🌐 <https://www.kowa-tec.co.jp/>
✉ sales@kowa-tec.co.jp

Tanrei (Self-Combusting Rotary Organic Continuous Carbonization Device)



Continuous kiln-type carbonization device for energy savings and high productivity

- **Self-combusting** : Self-combustion starts approximately 30 minutes after burner ignition, eliminating the need for additional fuel costs until production is completed
- **Yield rate of 50%** : While typical yield rates are around 25-30%, our device achieves a 50% yield rate, offering higher productivity and profitability compared to other companies' equipment.

✓ Delivery Records

Approximately 40 units installed across Japan, from Tohoku to Okinawa, including JA, rice centers, biochar manufacturers, and soil improvement manufacturers

📖 Other Information

• **Hybrid system** : Due to the difficulty of introducing raw materials with a moisture content of 30% or more directly into the carbonization device, we utilize the know-how from our main agricultural soil equipment products. By integrating our drying machine with the carbonization device, we repurpose the heat source, resulting in a 30% reduction in fuel costs.



Soil Farm Co., Ltd.

☎ +81-880-37-2737 🏠 +81-880-37-0246

📍 2478-2 Yokoze, Shimanto-shi, Kochi Prefecture, 787-0772, Japan
🌐 <http://www.soil-farm.com/>
✉ shimanto@soil-farm.com

Ligneous Pellet Manufacturing Machine



Compact and high-performance with the pelletizer flat die method

Taking advantage of the know-how we have been developing for many years as a precision parts manufacturer, we have secured the body and the structure with high reliability and durability. Further, with an emphasis placed on economic efficiency, it is possible to perform management and operation by one person and the maintenance such as replacement of consumables is also simple and easy. Decrease in the operating efficiency will be limited to the minimum as it is possible to delivery replacement parts in a short time. Without being limited to the ligneous substance, the materials that have been difficult to pelletize conventionally such as bamboos, straws, coffee chaffs, paper pulp, PKS and RPF may be pelletized.



✓ Delivery Records

Major paper-manufacturing companies, Forestry cooperatives, Lumber producers, Beverage manufacturers, etc.

📖 Other Information

The 21st Kochi Prefecture Local Industry Grand Prize The 7th Eco Product Grand Prize

Tosatech Co., Ltd.

☎ +81-88-804-7500 📠 +81-88-804-7501

📍 3-1065-69 Miwakotohira, Nankoku-shi, Kochi Prefecture 783-0087, Japan

🌐 <http://www.tosatech.com/>

✉ request@tosatech.com

MAREWA-SYSTEM Ship Engine Remote Monitoring System



Monitoring the safe voyage of your vessels from your office

A system that collects data from instruments installed on main engines, auxiliary engines, reduction gears, etc., enabling real-time monitoring of the condition of ship engines at sea and accumulated historical data.

✓ Delivery Records

Currently installed on two ocean-going tuna boats for trial purposes

📖 Other Information

[MAREWA-SYSTEM]

<http://www.kg3.jp/kagoodock/lp-marewa-en/>

MAREWA-SYSTEM
MARitime REMote WATCHman system

KAGOO CO.,LTD. KAGOO DOCYARD

☎ +81-887-38-3615 📠 +81-887-38-7162

📍 883-66 Otsu, Nahari-cho, Aki-gun, Kochi Prefecture, 781-6402, Japan

🌐 <http://www.kg3.jp/kagoodock/>

✉ development.kagoodockyard@kg3.jp

Auto weighing & packaging system



Weighing and packaging operations are completed with this system

- **Automatic operation of weighing and packaging**
The system is highly cost effective, as it operates automatically for processes ranging from weighing to packaging, with only one worker supplying products on the conveyor.
- **Full range of optional equipment**
Automation of cutting, weighing, and packaging is also possible by interlocking the weighing section with the slicer. In addition to weighing, counting machine specifications are also available, enabling use for industrial parts and frozen foods.
- **Reduction of waste and loss**
This reduced-sized, compact, and low-cost weighing system reduces the waste and loss of large, high-speed systems and enables the production of high-grade products.



☑ Delivery Records

All kinds of food (including frozen food), agricultural products, marine products, meat, confectionery, industrial goods, etc.

📖 Other Information

Weighing capacity: 15 shots/minute (varies depending on the shape, size and weight of the product)
Power consumption: 3-phase 200V 3.1kw
Installation dimensions: width 2420mm x depth 1800mm x height 1870mm
(*For a supply conveyor length of 1000mm)

Mitsuwa Sangyo Co., Ltd.

☎ +81-88-866-4504 📠 +81-88-866-4589

📍 205-7 Oko-cho Takimoto, Nankoku-shi, Kochi Prefecture 783-0040, Japan
🌐 <https://www.mitsuwasangyo.com/>
✉ eigyo@mitsuwasangyo.com

Internet automated feeding system“ESA ROBO”



Next-generation automated feeding system that fully utilizes IoT



ESA ROBO is a system that uses IoT to reduce the amount of labor required for feeding and reduce food waste in aquaculture. The effect of reducing the amount of discarded food will also help improve the marine environment. This product makes it possible to monitor and control remotely a fish tank using the internet by installing a fish sensor (ultrasonic) and water temperature sensor in the fish tank, and the condition of the fish can be checked regardless of the weather, both during the day or at night. In addition, the AI learning function and feeding control software make it possible to automatically control feeding machines by converting breeding know-how of producers into data. ESA ROBO, an automated internet feeding system, is a next generation feeding system that will revolutionize aquaculture methods. (Kochi Prefecture IOT Promotion Subsidy Project)

☑ Delivery Records

357 units shipped to 45 companies

📖 Other Information

For snapper farming



Pacific Software Development Co., Ltd.

☎ +81-88-850-0503 📠 +81-88-850-0573

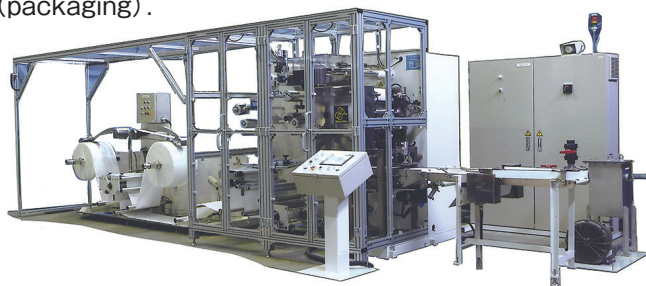
📍 105-22 Hongu-cho, Kochi-shi, Kochi Prefecture 780-0945, Japan
🌐 <https://pacificsoftware.co.jp>
✉ sales@pacificsoftware.co.jp

PTM-F1 fully-automated non-stop wet-wipe folding machine



State-of-the-art equipment designed for reliability and speed

After cutting a roll of nonwoven fabric into two strips, folding each strip lengthwise, injecting liquid, cutting the strips into the correct lengths, and folding each length into a "V", this fully-automated machine segregates a set number of wipes, merges the two lines into one, and sends the product on for further processing (packaging).



☑ Delivery Records

Production lines have been sold to makers of wet-wipes throughout Japan and exported to many countries overseas, including the United Kingdom, France, Italy, Germany, the Netherlands, China, Taiwan, Korea, and Thailand.

📖 Other Information

We provide made-to-order processors tailored to our customers' needs.

Shinwa Giken Co., Ltd.

☎ +81-889-24-7772 📠 +81-889-24-7722

📍 3586-10 Okina, Hidaka-mura, Takaoka-gun, Kochi Prefecture 781-2152, Japan

🌐 <https://www.jp/sg/>

✉ sg@wwb.jp

Sea Aqua Disaster-Relief Water Purification Device, Seawater-Compatible Model



Ensures safe and reliable drinking water and domestic water supply during disasters

Product Specifications :

- Model number : ADS-SW120
- Applicable raw water : Compatible with all types of raw water (seawater, brackish water, freshwater)
- Water production capacity (from seawater) : 2 liters/minute, 120 liters/hour
- Water production capacity (from freshwater) : 5 liters/minute, 300 liters/hour
- Device size : W : 865 x D : 640 x H : 610mm
- Weight : 86kg
- Power source: Selectable from single-phase AC 100V power supply, gasoline engine, LP gas hybrid engine, or butane gas (gas cartridge) engine

☑ Delivery Records

- JICA (Japan International Cooperation Agency)
- JDR (Japan Disaster Relief Team)
- Tokyo Fire Department
- Shimizu LMG
- IHI Shibaura
- Republic of the Philippines
- Republic of Haiti
- Kochi Prefectural Office
- Muroto City Hall
- Susaki City Hall
- Kuroshio Town Office
- Kochi Medical School Hospital
- Chikuma Hospital
- Tano Hospital
- Many others (administrative agencies and hospitals)



Aqua Design System Co.,Ltd

☎ +81-88-800-1364

📍 5-2409 Yokohamashinmachi, Kochi-shi, Kochi Prefecture, 781-0241, Japan

🌐 <https://www.aqua-d-system.com>

✉ mail2ryo_jp@yahoo.co.jp

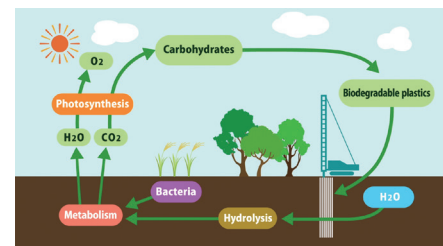
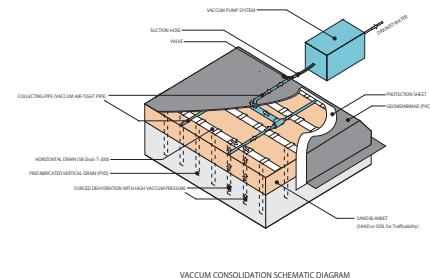
Geo Drain SPD method for soft ground improvement



Vacuum Consolidation Method with PVD which can reduce marine/micro plastic pollution.

Our ground improvement method and materials (PVD & PHD) which can reduce usage of sand/soil material has been contributed to reduce environmental destruction caused by infrastructure construction. Although we can reduce environmental destruction by substituting natural sand by plastic materials, the plastic drain materials cause new environmental problem which called marine/micro plastic. We, more than 10 years ago, developed new and unique drain material which biodegrade in the soil after complete ground improvement.

"Geo Drain SPD Method" which uses our unique biodegradable drain materials, NND (PVD) and BSB drain (PHD), can contribute sustainable infrastructure development by preventing environmental destruction not only by usage of sand but also marine/micro plastic problem.



Other Information

Method is effective for soft clay soil
Maximum depth to improve is approximately 50m

CHIKAMI MILTEC INC.

+81-88-822-1181 +81-88-824-5729

1-6-3 Ohtesuji, Kochi-shi, Kochi Prefecture 780-0842, Japan

<https://www.c-miltec.co.jp/english>

soumu@c-miltec.co.jp

"α-Shine Plate" Ultra-High Luminance Photoluminescent Emergency Exit Sign



Evacuation measures that consume zero energy using state-of-the-art luminescence technology !



This is a luminous product that applies the technology of the "Alpha Flash" series, which boasts the top share of the domestic market for high-intensity luminescent signs (approved for firefighting equipment) . It uses a newly developed light-storing pigment with excellent water resistance and complies with JIS outdoor Class II and Class I standards.

The "Alpha Shine Plate" is a super luminous phosphorescent sign made of acrylic resin (PMMA) processed on an aluminum plate and has an outdoor Class II luminous intensity even after ten years of outdoor use. It is used in about 500 locations in Kuroshio Town, Kochi Prefecture, about 300 locations in Konan City, Kochi Prefecture, and in other municipalities throughout Japan as a measure to clearly indicate evacuation routes and evacuation sites for Nankai Trough earthquakes.

Delivery Records

Konan City, Kochi Prefecture;
Kuroshio Town, Kochi Prefecture;
Nankoku City, Kochi Prefecture;
Aki City, Kochi Prefecture;
Kesennuma City, Miyagi Prefecture;
Hikone City, Shiga Prefecture;
Nagaokakyo City, Kyoto Prefecture;
Kihoku Town, Ehime Prefecture;
Izumozaki Town, Niigata Prefecture;
Murakami City, Niigata Prefecture;
Kamaishi City, Iwate Prefecture, etc

Other Information

JIS Z 9098/JIS Z 9097-compliant. 15 mcd/m² after 720 minutes.
This product is subject to emergency disaster prevention and mitigation project bonds.
Available in a free-standing type or wall-mounted type. Free design is also available.
*Kochi Prefecture registered product for disaster prevention (2019 Kochi Bosai No.4)



DAISEN Co., Ltd.

+81-88-846-5050 +81-88-846-5051

824 Nanatsubuchi, Kochi-shi, Kochi Prefecture 780-0030, Japan

<https://www.daisenkochi.com/>

ad@daisenkochi.com

SILENT PILER™



Press-in Methodology with SILENT PILER™

GIKEN manufactures a piling machine called SILENT PILER™ and offers the Press-in Method construction technologies worldwide. The characteristics of the SILENT PILER™, which include but are not limited to, low noise, zero vibration, and compact size, allows work to be carried out in constrained areas, such as over water, restricted headrooms, and construction along existing buildings.

One of the primary Press-in Methods, the Non-Staging Method, provides benefits to the total construction work as it allows the installation of piles without a temporary stage, thereby reducing construction costs and time.

Non-Staging Method

A methodology using the GRB™ System. Enables construction of structural walls without a temporary stage.

Zero Clearance Method

A methodology using the ZERO PILER™. Enables construction of structural wall to adjacent structures, railways, roads and boundaries. It also allows for better utilization of available spaces.

Overhead Clearance Method

A methodology using the CLEAR PILER™. Enables construction of structural walls under sites with restricted headroom without impacting the surrounding environment, i.e. traffic.

SILENT PILER™

Installs piles using static load without noise and vibration

Non-Staging Method



Zero Clearance Method



Overhead Clearance Method



✓ Delivery Records

Since the machine's introduction to the market in 1975, the Press-in Method has been adopted in more than 40 countries worldwide. Visit the GIKEN website for more details.

📖 Other Information

Implant™ Structure

Installation of piles using the Press-in Method achieves high rigidity and retainability.

Disaster Prevention

Human lives, property and cultural assets can be protected from natural disasters by utilizing the Implant Structure.

GIKEN LTD. Tokyo Head Office

+81-3-3528-1633 +81-3-3527-6055

16F Ariake Central Tower, 3-7-18 Ariake, Koto-ku, Tokyo 135-0063, Japan

<https://www.giken.com/en/>

international@giken.com

Emergency Backpack "Kuroshio"



An emergency backpack made of Kochi's denim material that is comfortable for everyday travel.

Emergency backpack full of ingenuity, designed and supervised by Sakiko Kambara, a disaster prevention specialist and professor at the University of Kochi. The backpack is equipped with cushioned shoulder straps, a luminescent zipper, and a side pocket that can hold a 500 ml plastic bottle or baby milk bottle and is very comfortable and suitable for men or women of all ages. In addition, the backpack made with denim material can be used by men and women of all ages, and is available in three types, including for adults, for children, and as a two-way backpack type that can be used by adults as well.

We can also provide a "Makaite Set" with food, a "Bocchiri Set" without food, a backpack, or other set contents upon request. Another option is you can purchase just the backpack.



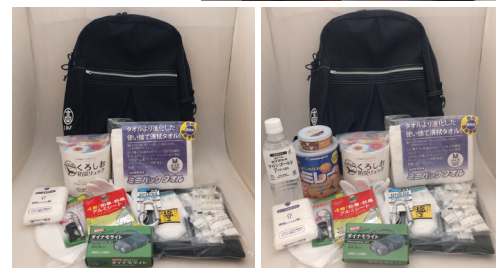
✓ Delivery Records

- Voluntary disaster prevention organizations within Tokyo
- Condominium management associations
- Preparedness for private company employees
- Staff emergency supplies for companies in the Kanto region

📖 Other Information

14 liters for adult backpack, 6 liters for children and small type Kuroshio Emergency Backpack with the Makaite Set 2.5kg/ Bocchiri Set 1.6kg

★Received the Excellence Award in the 2021 Bousai Goods Selection Awards, Lifestyle Division



Bocchiri set

Makaite set

Interest-Production

+81-90-3786-8431 +81-88-856-8680

Nankoku Office: 1199-8 Osone Kou, Nankoku-shi, Kochi Prefecture 783-0004, Japan

Kochi Warehouse: 4322 Niida, Kochi-shi, Kochi Prefecture 781-0112, Japan

<https://interest-prod.jimdo.com>

interest.tani@gmail.com

Genkidayo Safety Notification System



A simultaneous safety confirmation email can be sent immediately in the event of a disaster.

This system is designed to send out emails to registered users simultaneously to confirm their safety in the event of a disaster such as an earthquake or tsunami. The system starts counting at the same time as the emails are sent out, making it extremely easy to quickly confirm the safety of users.

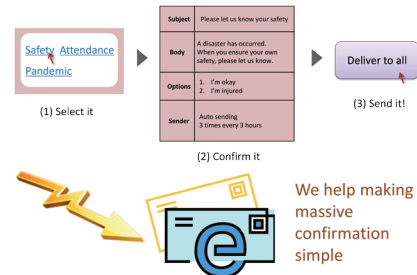
This immediate aggregation function can also be used as an everyday communication network or intranet system, leading to smooth operations in emergency situations. Canned text creation and detailed access control according to the structure of the group organization are possible. Because it is an internet-based service, it can be operated anytime, anywhere, even during power outages, as long as the user has a mobile internet environment such as a cell phone, smartphone, or laptop.

Delivery Records

Many municipalities and schools in Kochi prefecture.



Just 1, 2, 3 steps and done!



IT PRODUCT CO.,LTD.

+81-88-856-6840 +81-88-856-6841

2-12-7 Kaganoi, Kochi-shi, Kochi Prefecture 780-0032, Japan
<https://www.it-product.jp/>
info@it-product.jp

Foliage Plant with Emergency Kit



Decorative Emergency Kit, which can also serve as interior green for your daily life.

Since both Tasukaru Flower and Tasukaru Green can be used as house plants, you won't have to search for them during an emergency. They are equipped with a portable toilet (assembly type), so you don't have to worry about restrooms.

Delivery Records

A thank-you gift from the Ochi town office

Other Information

Materials: polyester, plastics, FRP, iron, wood
 2007 Local Industry Promotion Award



Iwaya Co., Ltd.

+81-889-26-3444 +81-889-26-3335

4137 Yokobatake-minami, Ochi-cho, Takaoka-gun, Kochi Prefecture 781-1312, Japan
<https://www.iwaya-hp.com/>
iwaya@iwaya-hp.com

Amphibious Excavator



For Dredging & Garbage Collection



- Immediate construction without temporary scaffolding for civil engineering work on water such as rivers, lakes and estuaries.
- It is possible to work at low-height bridge. (height over to 2.8 m) .
- Self-propelled by driving a crawler on land and a screw on water.
- Compatible with ICT construction equipment, ICT earthwork, and i-Construction.



Disaster Prevention Material Center opened

✓ Delivery Records

1 unit to Cambodia, 1 unit to the Philippines

📖 Other Information

Versatile models such as 0.7m³, 0.5m³, 0.25m³ and 0.14m³ are available.

Kochi Marutaka Co., Ltd.

☎ +81-88-845-1510 📠 +81-88-846-2641

📍 12-31 Azouno-minamimachi, Kochi-shi, Kochi Prefecture 781-0014, Japan

🌐 <https://www.ko-marutaka.co.jp/>

✉ marutaka@ceres.ocn.ne.jp

NS Net (Deteriorate Concrete Prevention Net)

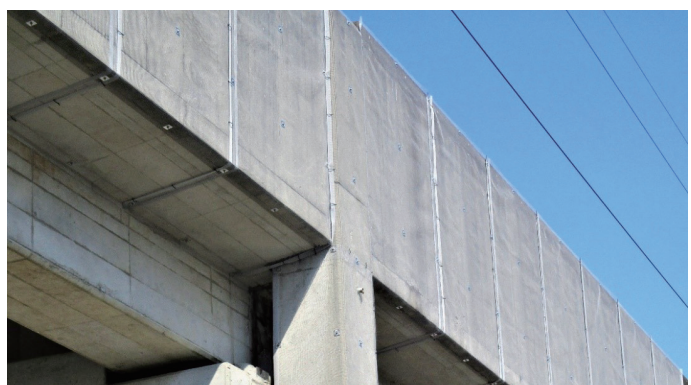


Adapts to the shape of the structure to prevent flaking with a clean appearance

Concrete fall prevention net that can be fixed with anchors only. The use of high-strength vinylon offers excellent durability, flame resistance, and flexibility.

It can be fixed along the shape of the structure thanks to a bending process that is easy in the field.

The mesh sheet is a gray color similar to concrete, and the appearance after installation is almost even.



✓ Delivery Records

More than 1,000,000m² throughout Japan

Nishinomiya Sangyo Co., Ltd.

☎ +81-88-856-5070 📠 +81-88-856-5090

📍 1-11 ikkunakamachi, Kochi-shi, Kochi Prefecture 781-8134, Japan

🌐 <https://www.nm-sg.com/>

✉ toda@nm-sg.com

Flood Monitor Water Disaster Monitoring System



Quickly and safely assess river and pond conditions during heavy rainfall

The Flood Monitor is a water disaster monitoring system that provides early detection of anomalies and disseminates danger information through monitoring river and pond water levels, rainfall, and remote camera surveillance. This powerful tool minimizes the damage caused by heavy rain disasters.

☑ Delivery Records

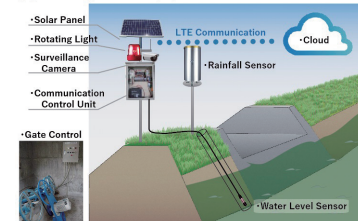
- Government agencies nationwide
- Local municipalities
- Construction consultants
- Telecommunications construction companies, etc.

📖 Other Information

- Solar-powered: Can be installed in locations without a power supply
- Abnormal notification function: Detects anomalies and promptly notifies the administrator, and can alert local residents with rotating lights and sirens
- Flexible system configuration: Allows for expansion or reduction of the system based on the situation, enabling cost-efficient operation



[System Configuration Example]



OSASI Technos, Inc.

☎ +81-88-850-0535 📠 +81-88-850-0530

📍 65-3 Hongu-cho, Kochi-shi, Kochi Prefecture 780-0945, Japan

🌐 <https://www.osasi.co.jp/en/>

✉ cs@osasi.co.jp

Disaster Relief Toilet 2-way Daichi-kun



Immediate solution for when there are no toilets available!



This product provides an immediate solution to the problem of "having no toilets available or temporary toilets not being delivered" in preparation for a large-scale disaster.

During normal times, ten assembled simple flush toilets and disaster supplies are stored in an underground stockpile tank, and in the event of a disaster, evacuees themselves can take out the assembled toilets from the tank and assemble them to create a large-capacity temporary toilet that can be used by 500 people for approximately 30 days.

Recommended for schools, daycare centers, and other locations that serve as community shelters!

The product is also used by companies and the Self-Defense Forces at their disaster recovery bases.



Large tank capacity suitable for 500 pers by 30days. Usable for temporary sewage tank.

☑ Delivery Records

Kochi city Josai Junior High School, Kochi Prefecture Japanese Red Cross Blood Center, Japanese Red Cross Aichi Disaster Management Center, Aisai City, Aichi Prefecture, NEXCO West Japan Kochi Expressway Office, Aki City Seisugaoka Junior High School, Ioki Nursery School, Akano Elementary School, Ananai Elementary School, Iguchi Elementary School, Aki City Stadium, Daiichi Elementary School, Aki Junior High School, Shimanto-cho Okitsu Nursery School, Kubokawa Junior High School, Shiwa District, Higashimata District, Kochi City Asahi Elementary School 22 locations/30 bases (as of the end of March 2023)

📖 Other Information

In case of a disaster, we have devised a variety of ways so that even people who see the Daichikun for the first time can immediately understand how to use it. This is our commitment to universality to ensure that people can still use the product 30 years from now.

*The product can be customized according to the needs of customers.

*It is recommended for schools, hospitals, evacuation centers, disaster relief centers, etc.

Shikoku Jokan Co., Ltd.

☎ +81-88-883-1011 📠 +81-88-884-1324

📍 19-31 Minamigoza Kochi-shi, Kochi Prefecture 781-0084, Japan

🌐 <https://saigaitaisaku.net/>

✉ info@saigaitaisaku.net

LED solar security light with seismic sensed auto-unlock key box and evacuation shelter sign board



Security light with a box that unlocks when shaken by an earthquake

Normally, the LED lights are automatically turned on after sunset using solar power stored during the day, and then turned off at a set time. The security box will open when an earthquake is detected, and at the same time, the security light and shelter indicator will light up. Including the keys to evacuation centers and stockpiles in the security box can make evacuation easier.

Other Information

Evacuation shelter sign/LED 96 units acrylic sheet 400 × 550 × 55
Lighting: 1,000Lm or above white light, ultra-high intensity white LEDs 48 units
Wind speed 60m/sec, solar part/sealed lead-acid battery 12V17AH × 4, expected life 10 years 10-hour timer
Lighting height / 3.8m
Material/power box: steel plate, pole Φ 120mm steel pipe, security light
Body: aluminum die-casting, lighting: acrylic
Operating temperature: -10°C to 50°C, storage temperature: -30°C to 70°C, no sunshine guarantee: 80W 4 days



SHIMA INDUSTRIES CO., LTD.

+81-88-847-1177 +81-88-847-1187

4338 Niida Shinzaki, Kochi-shi, Kochi Prefecture 781-0112, Japan
<https://shima-kochi.com/>
shima-kochi@ec6.technowave.ne.jp

Guardian Prefabricated Large Block



NETIS registered, i-Construction compatible retaining wall block

The Guardian is a prefabricated large block registered with NETIS, designed for various road retaining wall constructions and disaster recovery projects aimed at disaster prevention and mitigation.

The basic structure is a self-supporting precast product that connects the front and rear concrete panels with steel bars. Compared to traditional products, it is significantly lighter. By adjusting the length of the steel bars, it is possible to produce both uniform-thickness and variable-thickness blocks with different slopes on the front and rear. On-site construction does not require special techniques like formwork installation, and the retaining wall can be easily constructed by repeatedly stacking the blocks and pouring in-fill concrete. This simplified process greatly shortens the construction period, enhances overall work safety, and the internal steel structure significantly improves seismic resistance. This patented new technology is compatible with i-Construction.



Delivery Records

Within the prefecture : 46,200m² including projects commissioned by the Ministry of Land, Infrastructure, Transport and Tourism, various civil engineering offices of Kochi Prefecture, and municipal construction projects
Outside the prefecture : 30,800m² across various locations in Japan (26 domestic companies of the Guardian Block Industrial Association, with a track record at 43 factories)

Other Information

Dimensions: Large type: 1,665mm × 1,000mm × 500mm
Small type: 1,250mm × 800mm × 450mm (varies by shape)
Weight and price: Varies by shape. Panel patterns: Imitation stone, stone cladding, pearskin finish, etc.
Japanese patents: Two patents obtained: No. 6359733 / No. 6359750 for retaining wall blocks, NETIS registration SK-210001-A, trademark registered
Overseas patents: Obtained in Taiwan, India, Thailand, Indonesia, with expansions underway; applications in other countries are in progress
Recognized as a Kochi Prefecture Disaster Prevention-Related Product, certified under the Kochi Prefecture Model Ordering System (acquired in Taiwan), and certified as a product subject to the Kochi Prefecture Model Order System in 2019.

Shimanto Concrete Co., Ltd.

+81-880-22-8577 +81-880-22-8570

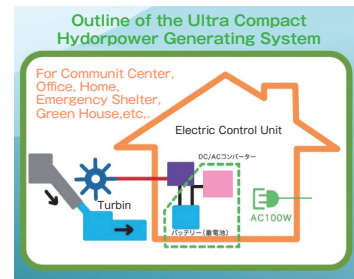
812-2 Tokonabe, Shimanto-cho, Takaoka-gun, Kochi Prefecture 786-0031, Japan
<https://www.shimanto-c.co.jp/>
shimanto-con@shimanto.tv

Cstream-1 High-performance, Ultra-compact Turgo Turbine Generator



Cstream-1 is a powerful and compact hydro turbine. With our high efficiency coreless generator and its dedicated fast charge control unit, it converts hydraulic energy into electricity with the highest efficiency. (200W under 5.5l/s of flow rate)

Various products can be powered by Cstream-1 converting its battery charged power into AC100V using DC/AC inverter.



Other Information

- What you can do with Cstream-1
- 200W is powerful enough for :
 - Refrigerator (30W)
 - LED light (30W)
 - TV (30W)
 - Laptop (20W)
 - Printer (18W)
 - Charging 5 mobile phones (5W)



SKY ELECTRONICS CO.,LTD.

+81-880-22-3993 +81-880-22-2332

1380-56 Higashionaro Shimanto-cho, Takaoka-gun, Kochi Prefecture 786-0027, Japan
<http://sky-denshi.co.jp>
info@sky-denshi.co.jp

Blue Sea Silt Fence



For disaster recovery work in ports, rivers, etc.!

This curtain under the float prevents the spreading of polluted water generated during construction. This anti-pollution fence was developed from the point of view of users, pursuing both workability and economy in order to prevent the spread of pollution. The product can be used for disaster recovery work and environmental protection work at waterfront areas such as ports and rivers. Rental products are also available.



Delivery Records

The product is widely used by general contractors, local governments, etc.

Takashina Life Preservers Co., Ltd.

+81-887-28-1173 +81-887-28-1881

2438 None Hei, Toyo-cho, Aki-gun, Kochi Prefecture 781-7301, Japan
<https://tlpc.co.jp>
koji_iseki@tlpc.co.jp

Hyakusanchin Tofu Bean Curd Jerky(Emergency Food)



Plant-based source of protein

One bag provides approximately 20% of the daily protein intake target (11.8 g) needed during a disaster, along with 127 kcal per 40 g bag.

This jerky has a moderate firmness and chewiness, providing a satisfying eating experience. The only allergen among the 28 specified ingredients is soy. Since no animal-derived ingredients are used, it is suitable for vegetarians. The product is vacuum-sealed, making it compact and lightweight, and easy to store even in limited spaces.

This is a gluten-free and vegan product.



Delivery Records

Kochi Prefecture, Kochi City, Kochi Prefectural Police, Machida City, Nishi-Tokyo City, Suginami Ward, Setagaya Ward, Bunkyo Ward, Ashiya City

Other Information

Our products for commercial use have won the Nikkei MJ Award for Excellence in the 2018 Nikkei Superior Products and Services Awards and the Grand Prize in the Food Category in the New Product Contest at the 24th Gourmet & Dining Style Show Fall 2018.

A patent for tofu jerky was obtained in May 2022.



front



back

Tanaka Shoku Co., Ltd.

+81-88-845-2451 +81-88-845-6507

1761 Nunoshida, Kochi-shi, Kochi Prefecture 781-5101, Japan

<https://www.tanakashoku.jp>

y-tanaka@tanakashoku.jp

PALA Lead Pipe Solar Guide Light



Our unique electrical circuitry will guide people to evacuation sites safely and securely.



The lead pipe solar guide light "PALA" is equipped with our unique electric circuit and is strong ally during nighttime disasters.

LED lights are installed in the guard pipe to evenly illuminate the area around the feet.

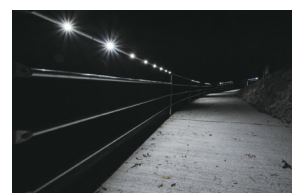
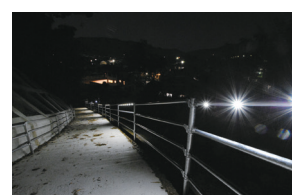
The handrails are free from protrusions and do not get hot, so you can safely climb up and down slopes and stairs while holding them.

One set of the lead pipe solar guide light "PALA" can provide light for approximately 100 meters.

Even if the solar panel cannot be charged after 20 days of rainy weather, it will always turn on when it detects an earthquake.

Also, the storage batteries do not require replacement maintenance for more than 10 years.

We can design the product according to various conditions such as installation location, usage and budget.



Delivery Records

Over 70 locations in Kochi Prefecture Hayama Town, Kanagawa Prefecture Hidaka Town, Wakayama Prefecture, etc.

Other Information

Please consult with us about specifications with backup power supply, square lights, heliport lights, special specifications, etc.

Tosatsushin Co., Ltd.

+81-88-856-3199 +81-88-856-3198

3157 Usa, Usa-cho, Tosa-shi, Kochi Prefecture 781-1161, Japan

<https://www.boating.co.jp>

hama@doating.co.jp

Special Elastic Rubber TS Seal



Special seismic elastic rubber that prevents water from seeping through joints

Special elastic rubber with excellent elasticity, durability, and weather resistance. The TS seal maintains strong adhesion and semi-permanent elasticity, and does not harden over the long term. In addition, the product has excellent earthquake resistance and permanent water sealing, and entails a special construction method that can be used for water and sewage pipes, underground common utility duct joints, and underground methane gas explosion-proof joints, and it is also used for lifelines such as oil and gas.

✓ Delivery Records

Used by many local governments across Japan for water supply and sewerage propulsion works, underground methane gas explosion-proof construction methods, underground common utility duct construction, and seawall repair works

📖 Other Information

- TS seal automatic mixing machine type
4.4kg set (4kg main agent + 0.4kg hardener)
13.2kg set (12kg main agent + 1.2kg hardener)
- TS seal tape
T10mm × W15mm × L3.8m / T13mm × W15mm × L3.8m
T15mm × W20mm × L4.0m
Shaped and dimensioned to suit the application, joint shape, and stopping power as required.
Price: Please consult with us (depending on construction conditions).
Product certified by Kochi Prefecture Disaster Prevention Industry Exchange Association (2012 Kochi Bosai No. 27)



Application of TS seal tape for joining drop-off manholes



Filling in the joints of a seawall



Filling the end face of the sewer pipe with TS seal

TS-Seal Co., Ltd.

☎ +81-88-884-4567 🏠 +81-88-884-8211

📍 2F Elite Harimaya Building, 2-12-13 Harimaya-cho, Kochi-shi, Kochi Prefecture 780-0822, Japan

💻 <http://ts-seal.com/index.php>

✉ info@ts-seal.com

Easy Stretcher



A stretcher for disaster prevention that can be easily carried by women and the elderly!



Polypropylene material that can be easily washed in water. While it can be transported by up to 10 people, it can also be transported by one person because it can be towed like a sled. The shape can be changed according to the transport circumstances. It comes with a special case for easy identification and four belts for drop prevention and traction. When stored, it can stand on its own, so it does not take up much storage space.

✓ Delivery Records

Companies, schools, voluntary disaster prevention organizations, local governments, welfare facilities, museums, construction sites, and events in and outside of Kochi Prefecture

Yoshimura Denso Co., Ltd.

☎ +81-88-850-0001 🏠 +81-88-850-0003

📍 2129-9 Asakura Hei, Kochi-shi, Kochi Prefecture 780-8063, Japan

💻 <https://www.y-denso.com/>

✉ calec@ca.pikara.ne.jp

Bleaching Paper Hairdressing Supplies



Target exactly where you want to dye!

Product Features

- Specialized paper designed to fully support the outcome of bleach touch-ups, work efficiency, and easy cleanup
- Features a dual-layer structure with one layer for absorption and another for water resistance
- Prevents application of chemicals on unnecessary areas, ensuring an even finish
- The absorption side on the front absorbs moisture and excess chemicals generated by the bleach's chemical reaction, preventing dripping
- The water-resistant side on the back blocks chemicals, prevents drying, and maintains the effectiveness of the bleach
- Combines these functions to prevent chemical application to unnecessary areas, ensuring an even finish
- Easy to pick up with one hand, improving work efficiency
- Made from soft special paper that adheres closely to the curvature of the head, preventing uneven exposure to air
- Strong against chemicals, won't tear or dissolve, and won't clog drains
- Suitable for straightening treatments and inner coloring

Full support of outcome of bleach touch-ups

Eliminate all the worries of treatment up to paper out with appropriate finishing and efficiency



✓ Delivery Records

- Evermate Co., Ltd.
- Korea

📖 Other Information

<https://www.youtube.com/watch?v=lxrtlmmSU8A>

FUJI PAPER CHEMICAL CO., LTD.

☎ +81-88-852-0332 📠 +81-88-852-0982

📍 1225-1 Takaokacho Otsu, Tosa-shi, Kochi Prefecture 781-1102, Japan

🌐 <https://fujipaper.com/>

✉ info@fujipaper.com

Lira Single toilet rolls(60 per case),
Lira Double toilet rolls(60 per case)



These special watermarked toilet paper rolls are a secret known only to a few

A source of company pride, Lira toilet rolls feature an extremely rare type of watermark created using local traditional Japanese papermaking techniques lovingly handed down from generation to generation for a refined, restrained touch unlike that produced by prints. Our toilet paper is made exclusively from carefully-selected natural pulp, which is combined with water from the clear-running Niyodo River and then slowly and painstakingly screened. The resulting paper is soft yet tear-resistant and notable for its suppleness. A total of five different watermarks are available; you won't know which one you'll get until you open the package (we're sorry, but customers cannot specify a watermark when ordering).

✓ Delivery Records

Available to individuals and hotels by mail order.



HAYASHI COMPANY, LIMITED

☎ +81-88-852-0535 📠 +81-88-852-5845

Please send an email for inquiries.

📍 3192-4 Takaoka-cho Otsu, Tosa-shi, Kochi Prefecture 781-1102, Japan

🌐 <https://www.tissue.co.jp/>

✉ hayashi@tissue.co.jp

TOSAWASHI (TENGUJO PAPER) Japanese paper



World thinnest machine made Japanese paper

Japanese paper is used in museums around the world for the conservation and restoration of cultural properties. Among the different types of Japanese paper, our products have earned the patronage and trust of customers around the world thanks to the following features:

- Stable quality
- Track record
- Not only quality, but also attentive service.



✓ Delivery Records

British Museum, Louvre, and other art museums, museums, and libraries in Japan and overseas



HIDAKA WASHI CO., LTD.

+81-889-24-7857 +81-889-24-7858

3486-1 Okina, Hidaka-mura, Takaoka-gun, Kochi Prefecture 781-2152, Japan

<https://www.hidakawashi.com/>

info@hidakawashi.com

Nanofiber Nonwoven Fabrics

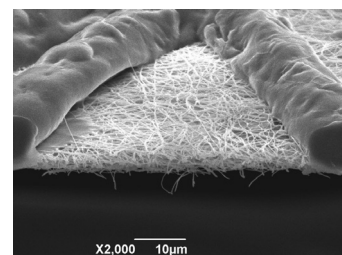
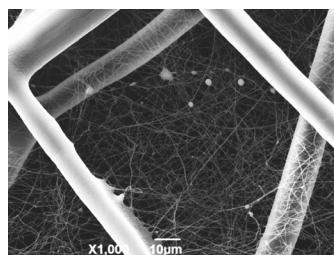


Nanofiber overlaid nonwoven fabric that surpasses conventional concept.



Our original manufacturing technology has developed stable and state of the art mass production process in nanofiber spinning. The product achieves a pore diameter of $10\mu\text{m}$ or less, which is difficult to be achieved with conventional technologies.

It has a proven track record as a mask filter with a low pressure drop (making it easy to breathe in) without reducing the trapping efficiency of fine particles. We are also engaged in the development of air filters and battery separators.



📖 Other Information

Awarded the Kochi Prefecture Local Industry Award in 2018

Hirose Paper Mfg. Co.,Ltd.

+81-88-852-7771 +81-88-852-7773

3292-1 Takaoka-cho Otsu, Tosa-shi, Kochi Prefecture 781-1102, Japan

<https://www.hirose-paper-mfg.co.jp/english>

sales@hirose-paper-mfg.co.jp

INDUSTRIAL
MACHINERY

AGRICULTURAL
MACHINERY

CIVIL
ENGINEERING
MACHINERY

ENVIRONMENTAL
AND BIOMASS
MACHINERY

OTHER
MACHINERY

DISASTER
PREVENTION
PRODUCT

PAPERMAKING

WOOD
PRODUCTS

OTHER
PRODUCT

Rurikon Tosa Washi Paper Coffee Filter



Praised by professionals! A Tosa washi paper coffee filter that brings out the true flavor of coffee beans

This coffee filter is made from Tosa washi paper.

1. Experience coffee aroma and flavor directly:
This filter is made from washi paper created from the fibers of kozo (paper mulberry) and karamushi (ramie), without using pulp. It has twice the number of pores compared to conventional paper pulp filters, allowing hot water to pass through twice as fast and delivering the coffee's aroma and flavor directly.
2. Eco-friendly: The packaging is environmentally friendly, with everything except the film wrapping the filter being made of paper. The origami-style washi wrapping is reusable.
3. Reusable: The filter can be used 3 to 5 times.



Other Information

Contains three coffee filters (for 1 to 4 cups)

Inoue Corporation

+81-88-852-0071 +81-88-852-5207

211 Takaoka-cho Otsu, Tosa-shi, Kochi Prefecture, 781-1102, Japan

<https://www.tosa-washi.com/>

inouetosawashi@gmail.com

Avonlea Keith moisturizing paper



The world's first moisturizing paper developed for delicate skin



The 100% pure pulp tissue paper is carefully crafted and blended with a moisturizing ingredient that captures an appropriate amount of moisture from the air, and naturally derived squalane is also added.

With a moist and soft touch, it is safe to use for colds, rhinitis, hay fever, etc., as well as for small children and those who want to gently care for their delicate skin.

The moistening ingredient blended tissue was released for the first time in the world in 1993.

Delivery Records

Nationwide supermarkets, drugstores, home centers, etc.

Other Information

Single product size

- (box 200pairs × 3 packs) 248 × 267 × 119mm 1074g
- (pocket 10pairs × 16packs) 220 × 75 × 75mm 240g



Kawano paper Co., Ltd.

+81-88-822-3107 +81-88-822-3110

71 Shimojima-cho, Kochi-shi, Kochi Prefecture 780-0934, Japan

<https://www.kawano-p.co.jp/>

kawanok@kawano-p.co.jp

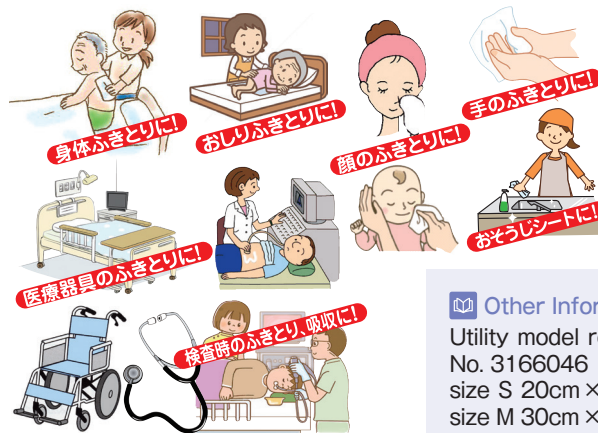
Cotton Wiping Towel



These disposable towels reduce the risk of cross-infection!



- Outstanding water absorption and retention! Moderate thickness and soft to the touch!
- Dry, enabling long-term storage for use in disaster or other emergency!



Other Information
Utility model registration
No. 3166046
size S 20cm × 18cm
size M 30cm × 18cm
size L 40cm × 18cm

MINIPACK CO., LTD.

+81-88-866-6789 +81-88-866-7888

57-3 Jorinji, Oko-cho, Nankoku-shi, Kochi Prefecture 783-0041, Japan
<http://www.minipack.co.jp/>
minipack@minipack.co.jp

Kamination File Washi Paper-Covered Clear File



A paper holder assembled with rare traditional Japanese washi techniques using rakusuishi water drop paper

Rakusui-washi refers to a traditional Japanese technique where water is dripped onto the paper during the papermaking process to create distinctive patterns. This method produces rare and beautifully designed paper. The washi is then laminated onto polypropylene to create a clear file, a popular stationery item in Japan. The resulting product is resistant to moisture, with a subtle transparency and smooth texture, offering a unique sense of quality. It is ideal for presenting important documents for valued clients or as a novelty item.

Specifications : Washi + polypropylene lamination
Sizes : A4(310 × 220mm), A5(220 × 155mm)



Delivery Records

Hospitals, financial institutions, stationery and gift shops, and sports event novelties

Other Information

Gold foil stamping for personalized names is available for orders of 100 sheets or more

MORISA CO., LTD.

+81-88-852-1177 +81-88-852-6622

218-1 Takaoka-cho Otsu, Tosa-shi, Kochi Prefecture 781-1102, Japan
<https://www.morisa.jp/en/>
info@morisa.jp

Create Original Goods



Paperwork shop where original goods can be created with just a sheet of paper.

We design, print, and process at our own factory. We will make proposals according to your needs with printing technology cultivated since our establishment over 80 years ago and product planning ability developed in our store "Paper message".



Motoyama Printing.co.ltd Paper message Department.

+81-88-872-0661 +81-88-823-4457

2-6-11 Okawasuji, Kochi-shi, Kochi Prefecture 780-0052, Japan

<https://www.papermessage.jp/>

info@papermessage.jp

Four-sided untrimmed adhesive label



Four-sided untrimmed adhesive label. These Japanese paper labels retain the natural handmade style because they are untrimmed.



This is a product made by improving machine-made Japanese paper with four untrimmed sides. It is in sheet form and is used for sake-labels and other types of labels. As there is no rubbing and no peeling, and less blotting during printing, it is an easy-to-use adhesive label paper.



Delivery Records

Goshuin label
(Kamo Shrine, Susaki)

Other Information

Please feel free to consult us regarding printing, size, etc.

NAIGAI TENGUJO PAPER CO.,LTD

+81-88-892-1088 +81-88-892-2968

1246-1Kada, Ino-cho, Agawa-gun, Kochi Prefecture 781-2133, Japan

<https://www.naiten.com/en/>

naigaitengu@kzd.biglobe.ne.jp

BIKATSU COOKING



All Purpose Reusable Paper

Miracle Paper by Master Craftman
1000 Year of Papermaking Legacy

[Product Features]

Elasticity

Exceptional derived from the 100% pure Natural Niyodo River.

Heavy-Duty

All purpose reusable paper is perfect for cleaning, drying, wiping, and more.

All-Natural

No-Binder added and 100% harmful chemicals free.



Other Information

Product Specifications

- Sheet size : 220mm × 210mm
- 80 sheets per roll, perforated
- Material : Pulp, rayon

Sansai Co., Ltd.

+81-88-852-3866 +81-88-852-3877

4517-2 Kitaji, Tosa-shi, Kochi Prefecture 781-1111, Japan

<https://www.sansai-co.jp/>

info@sansai-co.jp

“MY WET” sanitizing sheets



350 large sanitizing sheets manufactured in Kochi.

- For sanitizing tables and chairs
- For sanitizing doorknobs, switches, and handrails
- For sanitation control in stores and public facilities



Delivery Records

Municipalities, schools, kindergartens, and other facilities in Kochi Prefecture, etc.

Sansho Shigyo Co., Ltd.

+81-88-854-0521 +81-88-852-2170

2424-7 Kitaji, Tosa-shi, Kochi Prefecture 781-1111, Japan

<https://www.sanshoshigyo.jp/>

honsha@sanshoshigyo.jp

SUN MORE NA

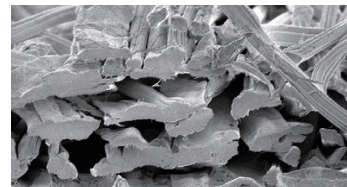
(ULTRA-FINE ACRYLIC NON-WOVEN FABRIC:FOR WIPING)



Ideal for wiping off scratch-prone surfaces with a three-layer structure that catches dirt!

Wipes clean foundation, hair wax, sweat, and other dirt from your mobile phone. It is thin and soft, so it catches dirt and dust in crevices.

In addition, no chemicals are used, so it is safe to use on your skin. They can be disposed of as burnable garbage. (They cannot be flushed with water.)



Cross section of ordinary rayon nonwoven fabric



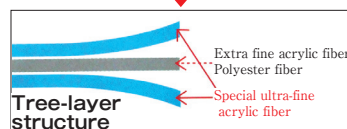
Cross section of NA superfine acrylic fiber nonwoven fabric

☑ Delivery Records

Various types of glass wipes, eyeglass wipes, and wipes for computer screens, cell phone screens, smartphone screens

📖 Other Information

Dirt can be easily removed because of the three-layer structure and special ultra-fine fibers. Both surface layers are made of split acrylic fiber, which has a polygonal cross-section to further improve dirt removal performance. It leaves almost no wipe marks because it absorbs surface dirt into the middle layer.



Sanwaseishi Co.,Ltd.

☎ +81-88-852-3811 📠 +81-88-852-3823

📍 443-1 Takaoka-cho Hei, Tosa-shi, Kochi Prefecture 781-1103, Japan

🌐 <https://www.sanwaseishi.co.jp/>

✉ sanwa-p@orion.ocn.ne.jp

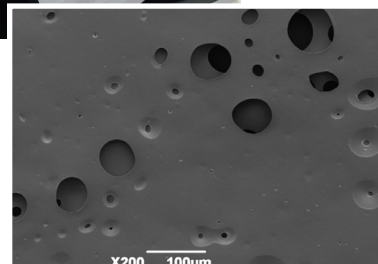
Adhesive sheet "Type FK"



It can be easily attached and peeled off on smooth surfaces, and also can be used repeatedly.

FK is adhesive sheet which contains no adhesive agent, and used for non-slip mat. Besides non-slip mat, it also can be used as a substitute for adhesive agent, adhesive tape, Velcro, magnet, etc.

While type FK is a sheet with acrylic foam coating on the surface of wet-laid nonwoven fabrics which were produced from our factory, this acrylic foam can be coated on the surface of PET films and fabrics with low breathability, so that customers' original FK tape can be made in accordance with individual requirements.



Techno Hirose Co., Ltd.

☎ +81-889-24-5200 📠 +81-889-24-7019

📍 277-2 Shimobun, Hidaka-mura, Takaoka-gun, Kochi Prefecture 781-2151, Japan

🌐 <https://www.hirose-paper-mfg.co.jp/english>

✉ sales@hirose-paper-mfg.co.jp

Maximum size, maximum absorbency urine pad 1800



Maximum size, maximum absorbency urine pad



You can rest assured until morning with the largest size and maximum absorbency that no other company offers. It has a gourd-shaped design that fits the crotch. The product prevents slippage and leaks. Furthermore, the maximum size (38 x 71cm) that completely wraps around the hips offers reassurance. A fluffy sheet is used on the part of the product that comes in contact with the skin to gently protect the skin. In addition, the back sheet is made of a soft cloth-like breathable sheet. It allows moisture to escape and prevents dampness. We support a comfortable life by designing products with the user in mind.

Delivery Records

Nursing care facilities, hospitals, drugstores, etc. throughout Japan

Other Information

Size: 38cm x 71cm, number of sheets: 30, approximate absorption volume: 1800ml



TOYOTOKUSHI CO., LTD.

+81-88-892-0058 +81-88-893-4808

112-1 Saiwaicho, Ino-cho, Agawa-gun, Kochi Prefecture 781-2103, Japan
<https://www.toyotokushi.jp>
contact@toyotokushi.jp

PAPER WASTE



Fast absorption speed with no lint shedding! Paper waste towel that replaces cloth

- Quickly absorbs and wipes away large amounts of water, oil, and other stains
- Unlike cloth waste towels, it does not produce lint
- Resistant to tearing even when wet, making it very convenient
- Minimal fluff and paper dust, with low static electricity generation
- Embossed and laminated in 3 or 4 layers without any adhesive
- Thick sheets that wipe away stubborn stains
- Made from 100% natural pulp, safe for use in food factories
- Easy to dispose of
- Sheet size : 380mm x 330mm



Paper Waste Roll 330m(1100cuts)



Paper Waste 50 sheets in Box

Delivery Records

Automotive repair shops, machinery parts manufacturing factories, printing factories, hospitals and care facilities, gas stations, etc.

Wako Paper Co., Ltd.

+81-88-892-1144 +81-88-893-3636

3936 Ino-cho, Agawa-gun, Kochi Prefecture 781-2110, Japan
<http://wako-seishi.jp/>
info@wako-seishi.jp

Japanese Laminated Bamboo Board and Veneer

Rare Japanese laminated bamboo

We are one of the few manufacturers of laminated bamboo in Japan.

We process Japanese Moso bamboo without using chemicals to create laminated board. The adhesive used in the production of this laminated board has a low formaldehyde emission, meeting the JIS F ☆☆☆☆ standard.

We also provide veneers sliced thinly from the laminated board. These veneers can be used as decorative materials applied to plywood or MDF.

Bamboo grows much faster than timber wood, making it a sustainable and environmentally friendly material. It can be used for a wide range of applications, from small items to construction materials.

✓ Delivery Records

Automotive industry
Audio industry
Construction industry

📖 Other Information

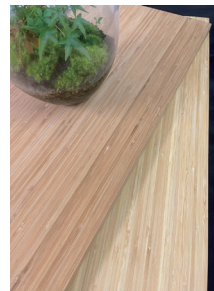
Laminated board specifications :

L2000 × W320 × T20mm

Veneer specifications :

L2400 × W300 × T0.25 mm

Other sizes can also be produced according to application needs



COSUMO KOBO Co.Ltd.

☎ +81-88-895-2060 📠 +81-88-895-2060

📍 4502 Niida, Kochi-shi, Kochi Prefecture, 781-0112

✉ k.cosumo@rice.ocn.ne.jp

monacca



Recycle the forest with a new shape of wood : monacca



Monacca is a unique wooden brand featuring molded designs made from cedar. Created through a collaboration between ECOASU UMAJIMURA, a small forestry company in Umaji-mura, Kochi Prefecture, and product designer Takumi Shimamura, monacca represents a commitment to exploring the potential of wood and forests.

This organic, natural gift from the forest features a design that emphasizes the beauty of wood while also focusing on the functionality of business bags.



✓ Delivery Records

Corporate campaign goods, gift goods, individual consumer purchases

📖 Other Information

Good Design Award

ECOASU UMAJIMURA CO., LTD.

☎ +81-887-44-2535 📠 +81-887-42-1911

📍 1464-3 Umaji, Umaji-mura, Aki-gun, Kochi Prefecture 781-6201, Japan

🌐 <https://www.ecoasu.co.jp/>

✉ umajimura@ecoasu.co.jp

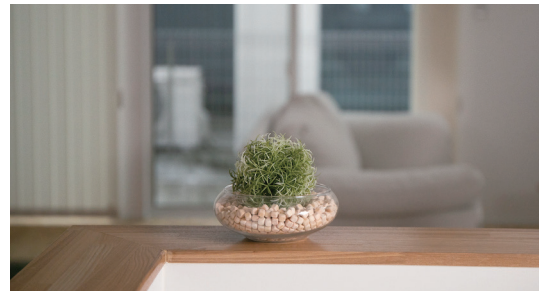
HINOKI WOODEN CHIPS



Natural air freshener made only from Tosa cypress, which is excellent for sterilization and deodorization.

This natural fragrance made of 7mm square granules of Tosa cypress from Kochi Prefecture features a refreshing and cool fragrance.

In general, cypress is said to have insect repellent and air cleaning effects against house dust. It can be placed in various places, such as entrances, cars, bathrooms, and closets, to enjoy the natural fragrance.



✓ Delivery Records

General merchandise retail stores, lodging facilities, public facilities

📖 Other Information

Raw materials: Tosa cypress, volume: 210g

GROWING

☎ +81-88-881-5049

📍 2-1 Maruike-cho, Kochi-shi, Kochi Prefecture 781-0802, Japan

🌐 <https://9rowing.jp>

✉ info@9rowing.jp

“Nandemo Noruzo” (Heavy staff loadable)



Withstand load of 150kg : Heavy staff loadable

A stepladder made of Kochi Hinoki cypress having gained popularity for pleasant touch, which may be used also for displays. Among others, the elephant on the label is very unique!



✓ Delivery Records

DIY stores

📖 Other Information

520mm×270mm×230mm

Ikegawa Mokuzai Kogyo Co., Ltd.

☎ +81-889-34-2015 🏠 +81-889-34-2545

📍 775-1 Doi Kou, Niyodogawa-cho, Agawa-gun, Kochi Prefecture 781-1606, Japan

🌐 <https://www.ikemoku.co.jp/>

✉ emono-maido@ikemoku.co.jp

INDUSTRIAL
MACHINERY

AGRICULTURAL
MACHINERY

CIVIL
ENGINEERING
MACHINERY

ENVIRONMENTAL
AND BIOMASS
MACHINERY

OTHER
MACHINERY

DISASTER
PREVENTION
PRODUCT

PAPERMAKING

WOOD
PRODUCTS

OTHER
PRODUCT

High Class Novelty Made of Natural Wood



Natural wooden novelty products created with the technology of a hunting gun manufacturer



Most rifle and shotgun gunstocks are made of wood, and they need to be safe, practical, artistic, and robust. Our products are made using a carving method that was developed from the gunstock processing technology of the Miroku Group and is also used in the wooden steering wheels of luxury cars.

● Advantages of the carving method

1. It is possible to show that you are using real solid wood.
 2. The natural wood grain is seamless and beautiful.
 3. No need for molds and can be produced in small quantities. We accept custom-made orders for material types, shapes, paint finishes, logos, etc.
- Examples of products: Business card cases, shoehorns, paper knives, key holders, coasters, name tags, etc.

Main types of wood: Bamboo (from Kochi Prefecture), bird's eye maple, walnut.



✓ Delivery Records

Automobile dealers, etc.

📖 Other Information

2003 National Local Industry Awards, Encouragement Award
2008 Shikoku Industrial Technology Awards, Technology Achievement Award, Excellence Award
2012 Shikoku Industrial Technology Awards, Technology Achievement Award, Excellence Award

2012 Kochi Prefecture Local Industry Awards, Local Industry Award
2013 The 5th Prime Minister's Prize, Monozukuri Nippon Grand Awards, Excellence Award in Application of Traditional Technology Category
2014 Selected as a 16th JIDA Target Product
2021 Kochi Prefecture Local Industry Awards, Local Industry Award

Miroku Technowood Co., Ltd.

☎ +81-88-880-6713 📠 +81-88-880-6710

📍 537-1 Shinohara, Nankoku-shi, Kochi Prefecture 783-0006, Japan
💻 <https://www.mirokutw.com/>
✉ info@mirokutw.co.jp

Wood wool, essential oil



Genuine Sustainable materials



A sustainable cushioning material made by the only company in Japan specializing in wood wool. The wood wool, which was started in 1961 when my father, who was a mine operator, established a wood and wool business, is carefully crafted by craftsmen who purchase wood from Kochi Prefecture from raw logs, by peeling and cutting the bark, and by looking at the grain of the wood.

The wood wool, which contains the power of Kochi's trees, is a buffer material, yet people who see it for the first time often remark on its beauty. The passion for craftsmanship of the Japanese people is reflected in the wood wool, who believed that giving a gift is the same as giving one's heart.

In addition to solar power generation, the recycling-oriented manufacturing process that produces zero waste wood through wood biomass-type drying is a material that embodies genuine SDGs in an environmentally friendly manner.

Applications include cushioning materials for fruits, foods, ceramics, etc., plant mulch, vegetative sheets and cool mats.

In 2022, based on the wood processing technology cultivated through the production of wood wool, we also started a distillation business of essential oils using the steam distillation method. We deliver nature's bounty by utilizing unused materials to their fullest.

✓ Delivery Records

JA Kochi Prefecture, Zen-noh Tokushima, Yamani Package Co., Ltd., Nisshoku Corporation

📖 Other Information

Raw materials: Pine, cypress, cedar, and camphorwood from Kochi Prefecture



Toda Shoko Incorporated

☎ +81-88-855-0426 📠 +81-88-855-1278

📍 580 Honmura, Tosa-shi, Kochi Prefecture 781-1122, Japan
💻 <https://www.toda-shoko.com/english>
<https://www.micil.jp>
✉ info@toda-shoko.co.jp

KUMIKO LOAD BEARING WALL



Japanese modern design bearing wall

This Japanese modern structural wall has excellent design based on Japanese Kumiko patterns. We have been able to use the Kumiko technique in a revolutionary way to make a new, stronger bearing wall for buildings. These walls have enhanced ability to resist horizontal impact from earthquakes and strong winds. This bearing wall using the Kumiko technique is a new innovation in Japanese architectural technology. By repeating this design pattern in bearing walls, a building like a birdcage can be made. Put simply, it has become possible to design architecturally superior buildings without using shielding walls.



Delivery Records

Public facility: House of Mr. Hayashi
Private houses

TOSA KUMIKO Co., Ltd.

+81-88-850-3080 +81-88-850-3082

80-1 Nishibun, Haruno-cho, Kochi-shi, Kochi Prefecture 781-0304, Japan
<https://tosakumiko.jp/home-english>
info@tosakumiko.jp

JAPANESE SPA



100% Natural Forest Thinning Eco-friendly Hinoki Product



Hinoki products of TOSARYU are made from aromatic Japanese Hinoki cypress which is a natural by-product of the forest thinning process. Hinoki wood is prized in Japan for its appealing, bracing scent. JAPANESE SPA is an environmentally friendly product which is made entirely from recovered by-product of the Hinoki wood manufacturing process of TOSARYU.

JAPANESE SPA contains a highly aromatic Japanese wood called "Hinoki". The Hinoki wood will bring a natural and pleasant citrus scent to your bathroom. Drop into your bath or hot tub and treat your senses to the calming and rejuvenating effects of "bask" in a Japanese forest.



Item # JC-67
contains 2bags(1bag:22g)

Other Information

Size: 120 × 45 × 245 mm (4.72" × 1.77" × 9.65")

TOSARYU Co., Ltd.

+81-889-49-0111 +81-889-49-0049

2830 Uranouchi Higashibun, Susaki-shi, Kochi Prefecture 785-0163, Japan
<http://www.tosaryu.com/>
hinoki@tosaryu.com

HiTOKi Gold Stretch Eye Mask



A miraculous 15-minute makeover

- Quantity: 60 sheets
- Price: ¥7,000 (before tax)

A sheet mask for the skin around your eyes, laugh lines, and neck. The water that is the product's base ingredient comes from the deep ocean off Muroto in Kōchi, while the sheets are made of nonwoven fabric also produced in Kōchi. Holding rich moisture in abundance, the sheets quickly bring elasticity and luster to your skin. Made with five skin factors lavishly compounded from ingredients including syn-ake, matrixyl 3000, edelweiss stem-cell extract, SESAFLASH, and not least, colloidal gold, these rich moisturizing masks help relieve the effects of aging.

✓ Delivery Records

Japanese beauty salons, with overseas sales in China and Hong Kong

📖 Other Information

We also take orders for OEM products.



Amenity Company, Limited

☎ +81-88-878-1066 📠 +81-88-878-1067

📍 17-23 Sugiiro, Kochi-shi, Kochi Prefecture 780-0072, Japan
 🌐 <https://www.amenityjp.com/en>
 ✉ Info@amenity.ne.jp

DEEPLINER Mega Spindle



Breathe new life into the world of jigging.

Jigging lure

[Product Feature]

Conventional long jigs can be hard to use in some cases, but the Mega Spindle with its unique spindle like characteristics give it great stability and operability. The unique design also reduces the chance of user errors. While using this jig with slow-pitched jerking, there are chances for bites during swimming and also falling.

[Product Specifications]

・ 30 g、40 g、60 g、80 g、100 g、130 g、150 g、
 180 g、200 g、250 g、300 g、350 g、400 g、500 g、
 600 g

✓ Delivery Records

80 shops in Japan
 10 countries



DEEPARS FACTORY CORPORATION

☎ +81-88-854-5606 📠 +81-88-854-5601

📍 3105-3 Nagahama, Kochi-shi, Kochi Prefecture 781-0270, Japan
 🌐 <https://www.garagenagi.com>
 ✉ info@garagenagi.com

Mass Flow Controller/Gas Mixer



Controlling gas flow automatically with high accuracy, mixing gas easily

◇ Mass Flow Controller ◇

Because automatic flow control is performed by measuring the mass flow rate of gas, there is no need to make corrections due to changes in factors such as the environmental temperature and operating pressure, making this controller capable of accurate and stable measurement and control.

◇ Gas Mixer ◇

This device is equipped with a mass flow controller to control the flow rate of each gas according to the desired flow rate ratio, and an inline mixer to mix the gases.

Other Information

In addition to the standard gas mixer, customized gas mixers can be designed and manufactured according to your needs and budget.



C2000 Series



CUBEGM-X Series



C1000 Series



Control Power Supply PA01PS

FCON CO., LTD.

+81-88-855-7100 +81-88-855-7166

Nankoku Office Park Center 109・110, 1-1-1 Hotarugaoka, Nankoku-shi, Kochi Prefecture 783-0060, Japan
<http://www.fcon-inc.jp/en>
contact@fcon-inc.jp

Kochi Essential Oil



Essential oil nurtured by Kochi's blessed nature and people



Product Features

- Pure natural essential oil distilled using mountain spring water and firewood from the clear-flowing Niyodo River, achieving carbon neutrality
- Over 60 varieties of essential oils from Japan
- Raw materials sourced from trees in Japan's top mountainous regions
- Sustainable citrus ingredients from Japan's leading citrus varieties
- Raw materials from renowned Japanese crops

Product: Essential Oil

- Woody: Kuro-moji, nikkei, cedar, hinoki, koya-maki, red pine, ho-sho, hiba, mizume-zakura, nioi-kobushi, momi
- Citrus: Yuzu, Tosa buntan, konatsu, ponkan, naoshichi, maru-bushukan, green lemon, bergamot, lime, shikuwasa, daidai, hassaku, natsumikan, amatsu, kumquat, sudachi
- Crop: Ginger, sansho
- Herb: Japanese mint, hierba-bubena, lemongrass, lemon basil, mugwort
- Lemon marigold



Delivery Records

- Providing fragrances to Japanese cosmetic companies (e.g., perfumes, soaps)
- Exporting overseas
- Online sales, direct sales, sales at Kochi Ryoma Airport, local markets, and roadside stations
- Hometown tax return gifts (e.g., Hidaka Village, Tosa Town, Motoyama Town, Tosashimizu City)

Other Information

Kochi Prefecture SDGs Certified Business and Kochi Prefecture Decarbonization Promotion Business

KOCHI FORESTVISION Corporation

+81-90-5339-6681

296-1 Shitenoki, Motomura Aza, Hidaka-mura, Takaoka-gun, Kochi Prefecture, 781-2164, Japan
<https://sei737.wixsite.com/kochi-wayuka>
wayuka.kochi@bluecom.jp

Organic Bedding



We are 120% organic

We are not satisfied with just 100% organic.

Safo pursues further 'safety and security' beyond GOTS certification. We offer '120% organic quality' by protecting the environment that involves everyone from the producers of raw materials to those who manufacture and use our products. We not only adhere to world-class organic certification standards of GOTS, but we also renew our certifications of rigorous international standards each year, going beyond just manufacturing and products to include packaging, accessories, and the production environment. Additionally, we implement thorough quality control measures, including blacklight inspections. We are 120% organic.

✓ Delivery Records

- Shop in shop at Hands Shibuya
- OEM Manufacturing for a high-end babywear brand, lifestyle brands and etc.
- OEM Manufacturing for NGOs

📖 Other Information

- Renewing our certifications of international organic standards each year.
- Consumer-oriented blue-chip company awarded
- Best Contributors to Product Safety Awarded
- Diversity Management Selection 100 Awarded
- Selected as Kochi SDGs promoting company



Heart Co., Ltd.

☎ +81-88-882-4788 📠 +81-88-882-4822

📍 4-18 Kitakanada, Kochi-shi, Kochi Prefecture 781-0073, Japan
<https://safo.jp/en/>
 ✉ organic@safo.jp

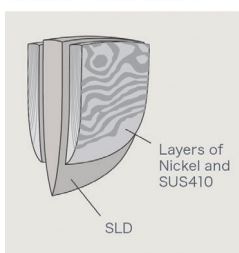
Sakon & Tosa-Ichi, leading knife brands in Kochi



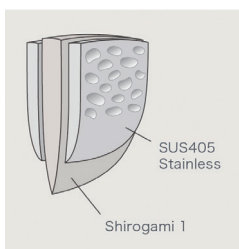
Japanese knives coveted by the world's top chefs. Latest releases from Hokiyama Cutlery

The former, "Shiraume" uses SLD die steel as its core of multilayer nickel damask blade. The latter "Saiun" has newly designed hammered finish blade with a classic carbon steel, Yasugi Shirogami No.1 as its core of 3 layered clad blade. They are furnished with stylish oak or walnut octagonal handle.

Sakon Shiraume



Tosa-ichi Saiun



✓ Delivery Records

Kitchen knife specialty store, kitchenware wholesaler, online knife shops in various countries

📖 Other Information

You can see our manufacturing sites and the trade fairs where we exhibit in the video on the FACTORY/Tour page of the official website.

Hokiyama Cutlery Co., Ltd.

☎ +81-887-53-5111 📠 +81-887-53-5115

📍 3-15 Sakaemachi, Tosayamada-cho, Kami-shi, Kochi Prefecture 782-0039, Japan
<https://www.hokiyama.com/global>
 ✉ info@hokiyama.com

IC Bordeaux (Copper fungicide)



Conforming to the Organic JAS Law. Excellent in its residual effect. No limitation in the number of days prior to harvest and the spreading number of times.

IC Bordeaux is a copper fungicide, the copper compound, the same as "Bordeaux Mixture" made from lime and copper sulfate. It is an agricultural chemical that reduces the time for making by hand and is easy to use, i.e. an environmentally-friendly fungicide for killing pathogenic microbes on fruit trees and vegetables. Effective ingredients are inorganic substances, so there are no concerns about drug-resistant bacteria. As it is excellent in adhesiveness and rain fastness, its protection and bactericidal effects are kept for a long time. It has been used regularly for 30 years for more than 30 farm products such as grape, citrus, peach, apple and tomato, its safety and high effect having been proved firmly. The quality of IC Bordeaux is also appreciated for farm products in Korea, China, Taiwan and Vietnam. Three types of solution are prepared for different farm products.



Delivery Records

National Federation of Agricultural Cooperative Associations, domestic dealers for agricultural chemicals, etc.

Other Information

IC Bordeaux 66D: Basic copper sulfate 28.1%
IC Bordeaux 48Q: Basic copper sulfate 31.2%
IC Bordeaux 412: Basic copper sulfate 35.0%

Inoue Calcium Corporation

+81-88-855-9975 +81-88-880-8808

Nankoku Office Park 2-3-5 Hotarugaoka, Nankoku-shi, Kochi Prefecture 783-0060, Japan
<https://www.inoue-calcium.co.jp/en/index.html>
international-sales@inoue-calcium.co.jp

Red coral praying beads



Coral beads are said to be the only beads that can be passed down from generation to generation.

Coral beads are said to be the only beads that can be passed down from generation to generation. These are the same type of prayer beads that Kukai received during the Tang Dynasty in China, with one hundred and eight beads. It is a superb article that you can carry with you on a daily basis, not only as a Buddhist ritual object, but also as a talisman.

Coral has long been used as a talisman to ward off evil and bad luck. In addition, coral beads are said to be the only prayer beads that can be passed down from parent to child from generation to generation.



Other Information

We belong to Kochi Coral Cooperative Association, and only deal with genuine natural gem corals.

Kensen35 CO.,LTD.

+81-88-873-5111 +81-88-873-4126

9-13 Sakaimachi, Kochi-shi, Kochi Prefecture 780-0834, Japan
<https://www.kensen35.com>
info@kensen35.com

PAN OISHIMAMA (Keep Bread Delicious)



A bag designed to keep your bread deliciously fresh

This is a bag that preserves the taste and quality of bread. It makes bread resistant to mold at room temperature, and it reduces changes in aroma, taste, and texture of bread when frozen, making it possible to enjoy the flavor of bread without having to re-bake it. The Keep Bread Delicious bread bag will help you when you want to freeze fine breads or homemade breads while they are still tasty, or when you want to store bread as safely as possible in your daily life.



Delivery Records
Hands, Loft

Other Information
Available in bulk, with an annual production of 2 million units



KINOUSOZAI Company, Limited

+81-88-822-8197 +81-88-823-6137

6-13 Nijudaimachi, Kochi-shi, Kochi Prefecture 780-0843, Japan
 <https://kinousozai.co.jp/>
 info@kinousozai.co.jp

Repellent Spray against Hornets



Repellent against hornets without killing them by using the scent of apricot flowers

This is a revolutionary hornets repellent developed through a university venture. This spray agent will quickly repel hornets and turn off their attack instincts, allowing a safe escape. The main ingredient is the scent of flowers, which has little effect on bees but a dramatic effect on all wasp families, including hornets.

Delivery Records

National Federation of Forest Owners' Co-operative (Woodland Co., Ltd.), Kochi University, The University of Tokyo, Tamagawa University, Kochi Prefectural Makino Botanical Garden, Yusuhara Town (Kochi Prefecture), Japan Native Honeybee Society (Iwate Prefecture), Kochi Prefectural Office, Kagawa Prefectural Office, Ino Elementary School (Agawa-gun, Kochi Prefecture), Nankoku City Fire Department, Kagoshima City Fire Department, Kochi University Hospital, Kochi Medical Center, Hokuriku Electric Power Co., Chugoku Electric Power Co., Kyushu Electric Power Co., national research institutes, ITADAKI General Incorporated Association (organizer of trail running and other events in the Chugoku and Shikoku region)

Other Information

University venture
Awarded the 33rd Kochi Prefecture Local Industry Awards, Encouragement Award
Awarded the 2019 Shikoku Industrial Technology Awards, Technological Innovation Award



KINP CO., LTD. (Kuroshio Institute of Natural Product chemistry)

+81-90-4334-4201 +81-88-813-0339

Faculty of Agriculture and Marine Science, Kochi University
B200 Monobe, Nankoku-shi, Kochi Prefecture 783-8502, Japan
 <http://kinp-chem.co.jp/>
 cskim@kinp-chem.co.jp

Shoyaku No Meguriyu(Crude Drug Beauty Bath Powder)



Five kinds of natural herbal medicines and hot spring ingredients promote circulation, leading to a beautiful and healthy body.

Shoyaku No Meguriyu was developed by Matsuda Pharmaceutical based on its long years of research on herbal medicines, focusing on herbal medicines that are effective at the optimum temperature for bathing. Five kinds of natural herbal medicines have been selected to improve the circulation of the body, and the combination of hot spring ingredients not only makes the water soft, but also draws out the active ingredients of these herbal medicines.

The full power of herbal medicines will warm your body from the core and improve circulation, leading to a beautiful and healthy body.

Delivery Records

Sales through our own e-commerce site, sales to other mail-order companies

Other Information

(Matsuda Pharmaceutical online shop)

https://meguriyu.matsudaiyaku-shop.jp/sm_1703_1_a.html



Matsuda Pharmaceutical CO., LTD.

+81-88-862-1666

+81-88-862-1770

229-1 Soyama, Nankoku-shi, Kochi Prefecture 783-0052, Japan

<https://www.matsudaiyaku.co.jp/>

nangoku@matsudaiyaku.co.jp

3D Figure Modeling



Create exciting scenes with our elaborate craft skills. Leave everything from design to construction up to us!

FRP (fiberglass reinforced plastic) and various other materials and construction methods can be used for large-scale productions for theme parks, shows, events, and stages.



■Kihoku Town Demon Monument
W 2000×H 4700×D 2000 FRP,
steel frame, resin mortar, paint



■Navy Type Reconnaissance Seaplane Full-scale Replica
W 12800×H 5040×L 10840 FRP steel, paint



■Kochi Ryoma Airport Sakamoto Ryoma Statue
W 1600×H 2000×D 1200 FRP paint

m.e.works inc.

+81-88-856-9914

+81-88-856-9915

2098-2 Koda, Kochi-shi, Kochi Prefecture 780-8040, Japan

<https://meworks.jp>

info@meworks.jp

Fish Leather Products



Connecting with the majestic ocean

The fish leather brand "Ocean Leather" was established in Kochi in 2021, focusing on discarded fish skins.

Fish leather uses fish skins nurtured in the beautiful seas of Kochi, as well as skins from fish commonly processed for food. Artisans meticulously craft these skins into an eco-friendly and unique material. Lightweight and durable, its one-of-a-kind design evokes the essence of Kochi's sea with every use.

Product Features

- Uses eco-friendly plant tannins
- Diverse and colorful
- Each piece has a unique appearance
- Made from discarded fish skins turned into leather
- Lightweight and durable
- Smells like regular leather products
- Entire production process from leather to sewing done in Kochi Prefecture

Delivery Records

- Nissui Corporation
- Airbus Helicopters Japan Co., Ltd.
- United Nations Development Programme (UNDP)
- Ishikawa Co., Ltd.
- Otsuki Town Hometown Promotion Corporation
- General Incorporated Foundation
- Sanyoso Co., Ltd.
- Local government authorities

Other Information

- 37th Local Industry Encouragement Award Winner
- YouTube (<https://youtu.be/w6w8nc5Pwis?si=mR24FMbAtZd56duS>)



Ocean Leather/KO-YO-FREEZE CO., LTD.

19-9, Kokadai, Kochi-shi, Kochi Prefecture, 781-0811, Japan

<https://oceanleatherofficial.com/en/>

oceanleather@ko-yo-freeze.co.jp

+81-88-883-1492 +81-88-884-3438

Jewelry Box



Preserved flower arrangements with Tosa Japanese paper

This product uses Baby's breath from Kochi Prefecture.

Roses of various colors are available.

[Contents]

Preserved flower rose, preserved flower gypsophila from Kochi Prefecture, preserved flower leaf, Tosa Japanese paper, case.



Rdesignstyle

3-3-32 Takasushinmachi, Kochi-shi, Kochi Prefecture 781-8122, Japan

<https://www.rdesignstyle.com>

rdesign@df.moo.jp

+81-88-885-9330 +81-88-885-7470

TOSA santok forged knives(Nickel Damascus steel 33 layer VG10)



Enjoy the taste of seasonal ingredients. The good cutting quality makes work more pleasant.

Cooking seasonal ingredients with this sharp knife will make cooking more enjoyable. A Santoku knife is the most common kitchen knife in Japanese households. It can be used for all kinds of fish, meat, vegetables, and fruits. The blade is double-edged and can be used by either right- or left-handed users. The steel used has a 33-layer structure consisting of stainless steel and VG 10, a high-hardness, high-carbon material. A beautiful Damascus pattern like the grain of wood spreads over the entire surface of the blade, creating a sense of luxury.

Delivery Records

Japan and overseas (major department stores, outdoor stores)

Other Information

Overall length/blade length/width/thickness: 332/200/48.5/2.3
Weight/ blade shape: 235g / Double-edged
Steel/handle/box: Damascus 33-layer VG10/sandalwood/ with dedicated case



Toyokuni Co.,Ltd.

+81-88-862-2819 +81-88-862-2817

728-2 Kameiwa, Nankoku-shi, Kochi Prefecture 783-0071, Japan
<https://toyokuni.net/>
info@toyokuni.info

Gensuke Clean



Zero equipment costs. Lakes, oceans, and rivers can be revived simply by adding GS bacteria.

In FY2019, we were selected by the Ministry of the Environment for an environmental technology demonstration experiment, and we were currently conducting a demonstration test verification. (Demonstration number: 020-1902)

We have achieved effective water purification by combining granular and liquid forms to improve odors and reduce sludge at a low cost.

This product helps people restore the correct laws of nature without the use of chemicals or any other artificial power.

Unlike forced methods, once the natural cycle is restored, only a few more inputs are needed to maintain the beauty of nature for a long time to come.



Delivery Records

Outer moat of the Kochi Castle, Nomi Bay, Matsuyama Castle, livestock experiment stations

Ueta LABO Co., Ltd.

+81-889-42-4620 +81-889-42-5515

93 Kirima Nishi, Susaki-shi, Kochi Prefecture 785-0059, Japan
<https://gskin.jp>
info@gskin.jp



Precious Metal Evaporation Deposition Materials(for pellets or shots)



High-quality precious metal materials manufactured according to the purpose of use.

Precious metal evaporation deposition materials are used for semiconductors, electronic parts, and various kinds of displays. To meet the demands for high purity and uniform shape, we insist on high quality when manufacturing products. As we are able to adjust size or blending according to the purpose of use, please do contact us for consultation.

✓ Delivery Records

Semiconductor or device manufacturers, both in Japan and abroad, and domestic trading companies.

📖 Other Information

We can process precious materials into various shapes, like powder, chips, lines or plates, etc., as well as evaporation deposition materials. First of all, consult us.

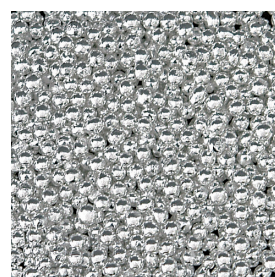
※We appreciate your understanding that we may not meet your request depending on the contents.



pellets_Pt



pellets_Au



shots_Ag

YAMAKIN CO., LTD.

☎ +81-887-55-0120 📠 +81-887-55-0053

📍 1090-3 Otani Kamibun, Kagami-cho, Konan-shi, Kochi Prefecture 781-5451, Japan

🌐 <https://www.yamakin-gold.co.jp/>

✉ kouchi-soumu@yamakin-gold.co.jp

Disaster Risk Reduction and Management Products Portal Site of Kochi

「KOCHI BOSAI」



<https://kochi-bosai.com>



Official Website for Tourism in Kochi

「VISIT KOCHI JAPAN」



<https://visitkochijapan.com/en>

The Official site for Kouchi Prefecture produce export

「KOCHI FRESH」



<https://www.kochi-fresh.com/en/>

INDEX Company Index

A	AKATSUKI INDUSTRIAL CO., LTD	15	Kensen35 CO., LTD.	45	Shinwa Giken Co., Ltd.	20		
	Amenity Company, Limited	42	KINOUSOZAI Company,Limited	46	SKK Corporation	13		
	Aqua Design System Co.,Ltd	20	KINP CO., LTD. (Kuroshio Institute of Natural Product chemistry)	46	SKY ELECTRONICS CO., LTD.	27		
	Aqua System Co., Ltd.	15	KOCHI FORESTVISION Corporation	43	Soil Farm Co., Ltd.	17		
C	CHIKAMI MILTEC INC.	21	Kochi Marutaka Co., Ltd.	24	SYMTEC CO., LTD.	13		
	Chuo-Seiki Co., Ltd.	6	KOWATEC Co., Ltd.	17	T	Taiyo Co., Ltd.(E&A division)	11	
	COSUMO KOBO Co.Ltd.	38	M	Matsuda Phamaceuticals CO., LTD.		47	Takashina Life Preservers Co., Ltd.	27
DAISEN Co., Ltd.	21	m.e.works inc.		47		Tamtec Co., Ltd.	14	
DEEPARS FACTORY CORPORATION	42	MINIPACK CO., LTD.		33	Tanaka Shoku Co., Ltd.	28		
E	ECOASU UMAJIMURA CO., LTD.	38	Miroku Machine Tool, INC.	6	Techno Hirose Co., Ltd.	36		
F	FCON CO., LTD.	43	Miroku Technowood Co., Ltd.	40	Toda Shoko Incorporated	40		
	FUJI PAPER CHEMICAL CO., LTD.	30	Mitsuwa Sangyo Co., Ltd.	19	Tosa Denshi Corporation	8		
G	GIKEN LTD. Tokyo Head Office	22	MORISA CO., LTD.	33	TOSA KUMIKO Co., Ltd.	41		
	GROWING	39	Motoyama Printing.co.ltd Paper message Department.	34	TOSARYU Co., Ltd.	41		
H	HAYASHI COMPANY, LIMITED	30	N	NAIGAI TENGUJO PAPER CO.,LTD	34	Tosatech Co., Ltd.	18	
	Heart Co., Ltd.	44		Nishinomiya Sangyo Co., Ltd.	24	Tosatsushin Co., Ltd.	28	
	HIDAKA WASHI CO., LTD.	31	O	Ocean Leather/KO-YO-FREEZE CO., LTD.	48	Toyokuni Co., Ltd.	49	
	Hirose Paper Mfg. Co.,Ltd.	31		OSASI Technos Inc.	25	TOYOTOKUSHI CO., LTD.	37	
I	Hokiyama Cutlery Co.,Ltd.	44	P	Pacific Software Development Co., Ltd.	19	TS-Seal Co., Ltd.	29	
	IIDA Tekko Co., Ltd.	12	R	Rdesignstyle	48	TSUKASA JUKI Co.Ltd.	14	
	Ikegawa Mokuzai Kogyo Co., Ltd.	39		RYOCO SEIKI CO., LTD.	7	U	U-CHIKA CO., LTD.	11
	Inoue Calcium Corporation	45	S	Saibara Iron Works Co., Ltd.	12		Ueta denki Co., Ltd.	8
Inoue Corporation	32	Sakamoto Giken Corporation		7	Ueta LABO Co., Ltd.	49		
Interest-Production	22	Sansai Co., Ltd.	35	Ujiden Chemical Industry Co., Ltd.	9	W	Wada Kikai Co., Ltd.	9
IT PRODUCT CO., LTD.	23	Sansho Shigyo Co., Ltd.	35	Wako Paper Co., Ltd.	37			
Iwaya Co., Ltd.	23	Sanwaseishi Co., Ltd.	36	Y	YAMAKIN CO., LTD.	50		
K	KAGOO CO.,LTD. KAGOO DOCYARD	18	Sasaoka Co., Ltd.		10	YAMASAKI GIKEN CO., LTD.	10	
	KAKIUCHI CO., LTD.	16	Shikoku Jokan Co., Ltd.		25	Yoshimura Denso Co., Ltd.	29	
	KANEMATSU ENGINEERING CO., LTD.	16	SHIMA INDUSTRIES CO., LTD.	26				
Kawano paper Co., Ltd.	32	Shimanto Concrete Co., Ltd.	26					

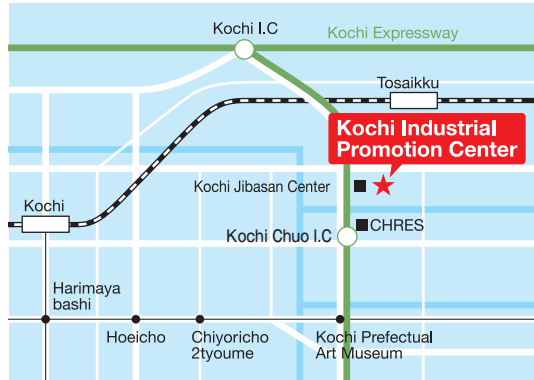
Offices

Public Interest Incorporated Foundation

Kochi Industrial Promotion Center

3992-2 Nunoshida, Kochi-shi, Kochi, 781-5101, Japan

Phone **+81-88-845-7700**



Tokyo Marketing Headquarters

(Trade Coordinator – Tokyo representative)

8F Uchisaiwaicho Daibiru Building

1-3-3 Uchisaiwai-cho Chiyoda-ku, Tokyo, 100-0011, Japan

Phone **+81-3-6452-8830**



Osaka Marketing Headquarters

(Trade Coordinator – Osaka representative)

1F, Senba Central Building

2-6-8, Honmachi, Chuo-ku, Osaka-shi, Osaka, 541-0053, Japan

(Kochi Prefecture Osaka Office)

Phone **+81-6-4708-3398**



Nagoya Office

(Trade Coordinator – Nagoya office)

5F, Chunichi Building

4-1-1, Sakae, Naka-ku, Nagoya-shi, Aichi, 460-0008, Japan

Phone **+81-52-684-4904**



