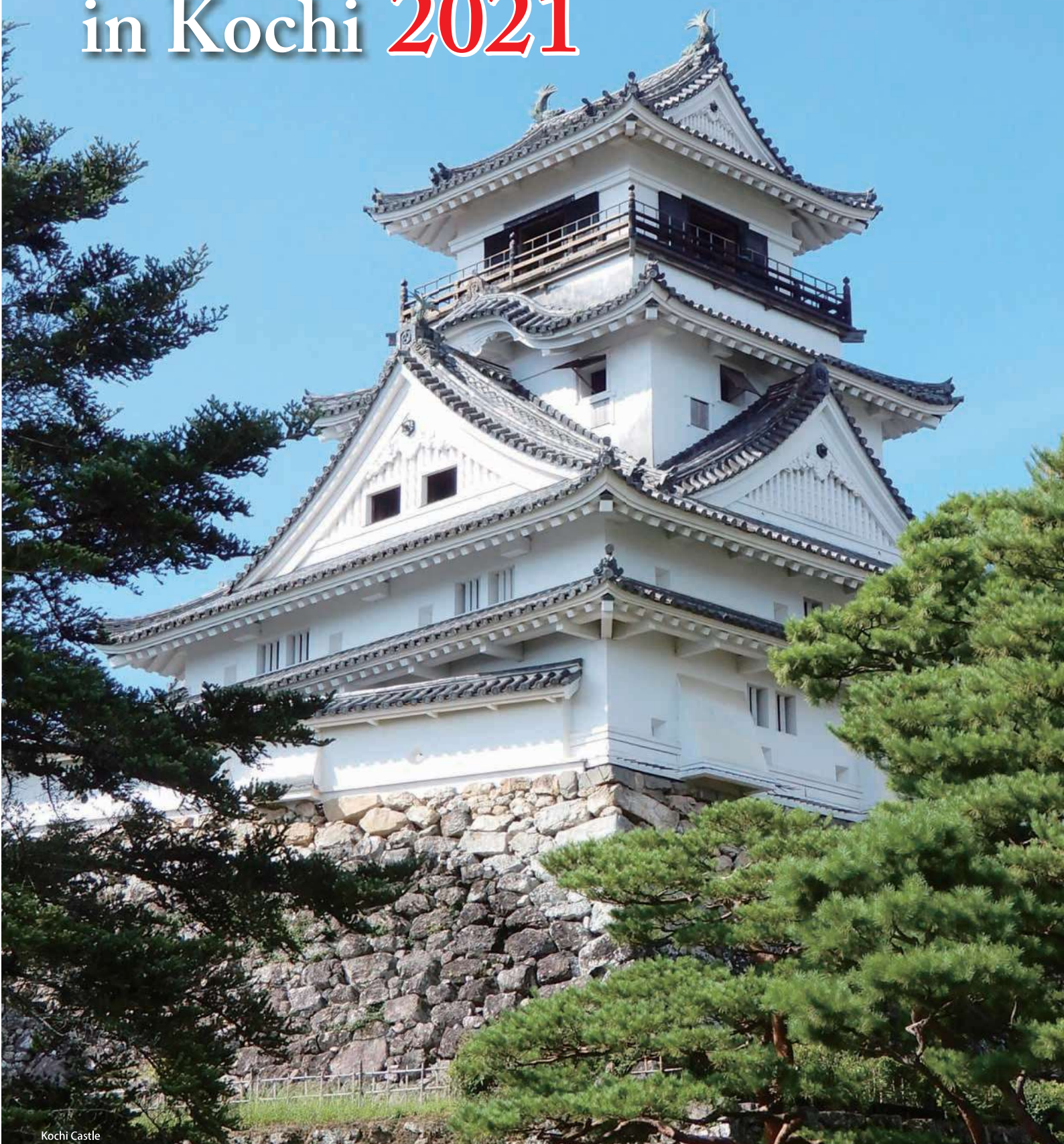


Guidebook for Selected Products in Kochi **2021**



Kochi Castle

Message from President

Foundation established for the purpose of promoting the development of industries in “Kochi Prefecture” and at the same time contributing to actualization of vigorous regional economy by performing projects for supporting actualization of local industries comprehensively with goodness and strengths leveraged.

Kochi Prefecture has formulated the Kochi Prefecture Industrial Promotion Plan, a total plan for economic revitalization, and is working toward the realization of "Kochi Prefecture, where local and external trade advances and young people can work with pride and ambition in the region."

In this prefectural plan, with the aim of fostering industries with high added value and labor productivity, the prefecture aims to strengthen measures such as "fusion of digital technology and local industries" and "strengthening networks outside the prefecture and overseas." We will actively promote overseas expansion support for companies in the prefecture.

Based on this prefectural plan, our Center has been promoting development of manufacturing industry in the prefecture in cooperation with the Prefectural Government and also with the relevant organizations and associations.

During 2020, industries in Kochi Prefecture were greatly affected by the unexpected crisis of the spread of the novel coronavirus in Japan and overseas. However, we are working to promote the manufacturing industry in the prefecture in cooperation and collaboration with the prefectural government, municipalities, and related organizations.

This catalogue has been created for the purpose of introducing the overview of Kochi Prefecture and representative products of Monozukuri (meaning Manufacturing) enterprises therein to overseas markets. It would be much appreciated if this catalogue could help you deepen your understanding of Kochi Monozukuri enterprises and products.

March 2021

Public Interest Incorporated Foundation
Kochi Industrial Promotion Center
MASATO NAKAGAWA
President



Introduction of Kochi Prefecture

Kochi Prefecture is broadly facing the Pacific Ocean where the Kuroshio Current washing the coast. The region is also blessed with the beautiful and affluent assets from the nature with the super-clear streams of the waters represented by Shimanto-river and Niyodo-river, and the very deep green mountains in the north.

The rich nature of Kochi is also an abundant repository of fresh foodstuffs, so “Kochi’s Cuisine” is the big pleasure for the tourists. In fact, the nationwide survey of the major travel agency have repeatedly selected Kochi to be the “Best Choice” in terms of serving many delicious foods special to the local area.

The unique history and the cultural climate of Kochi have produced a large number of predecessors like Ryoma Sakamoto, the leading spirits of the Meiji Restoration at the end of Edo Shogunate.

At this point of time, the special exhibition called “Bakumatsu-Ishin Haku” is held here in Kochi, the good opportunity to search and explore the very close involvement of this region behind the dawn of Japan’s new era.

In summary, the free and dynamic character of Kochi has brought up broad-minded prefectural nature.

The wisdom and the ability of Tosa people with full of ideas have generated a variety of well-considered unique agricultural products as well as industrial technologies. Lastly but not least, the region has been and will continue developing the local unique cultural events,

“Yosakoi-Festival” for example of great individuality.

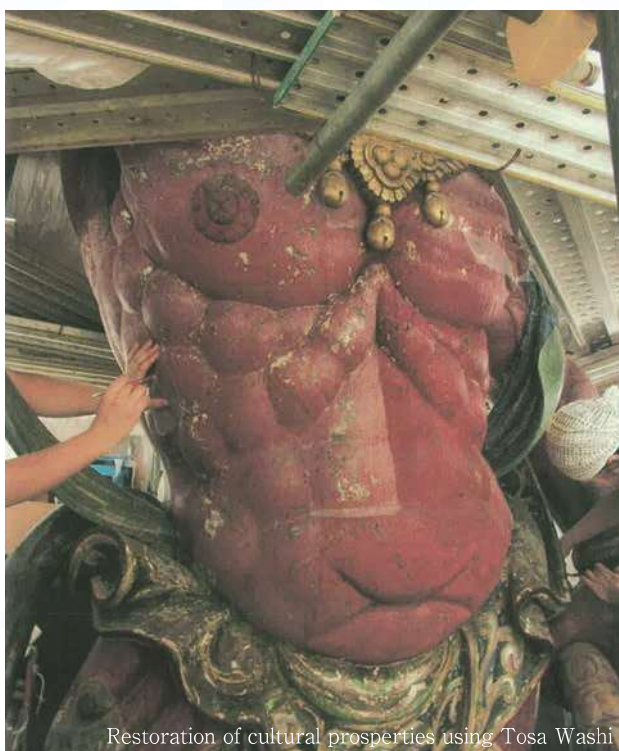


WIDE VARIETY OF PRODUCTS IN KOCHI PREFECTURE

Traditional Industry

In Kochi Prefecture, the Japanese traditional paper “Tosa Washi” and the dried bonito “Katsuo Bushi” utilizing the regional raw materials and also the technologies and products in the agriculture, forestry and fisheries fields that use countryside, mountain and marine resources have been created since ancient times. Further, under the severe conditions with many steep terrains, the civil engineering technologies for post-disaster restoration have been developed.

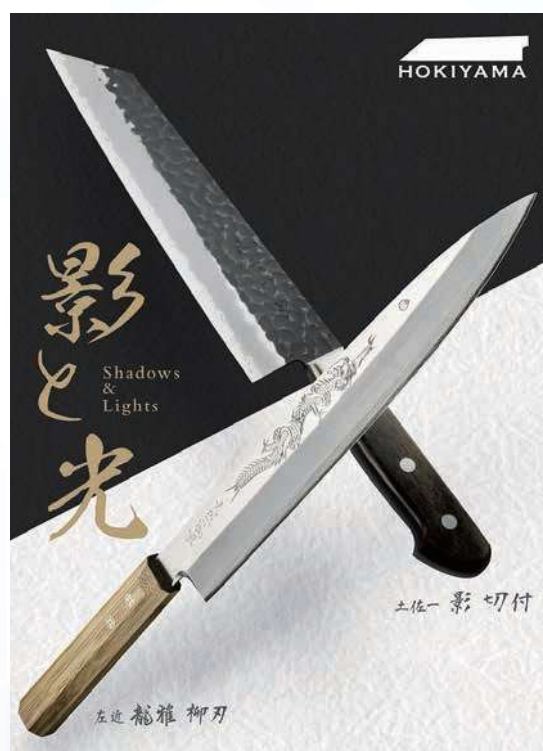
Original ideas and ingenuity are added to them through the efforts of people concerned to result in birth of new products and technologies still now.



Restoration of cultural properties using Tosa Washi

Tosa Washi paper

Boasting a history of one thousand years, the Tosa Washi paper was protected as a major special product of the Tosa Domain and enjoyed its prosperity as a traditional local industry in the Paper Kingdom Tosa during the Edo Period. In recent years, it is highly evaluated both in Japan and abroad as the cultural assets repair material with the records that it is not only used for usual “Shodo” calligraphy or for a framing tool “Hyogu”, but also for repair of artistic collections in the Louvre and other museums



Tosa forged cutlery

It is said that the history of forged cutlery started at the late Tensho period (in the 1590s). At present, Kochi is known as one of the most popular cutlery manufacturing areas of Japan with the fact that there are some products with the 60% market share in Japan among the cutting tools for forest. And also, for example, kitchen knives and outdoor use knives are highly evaluated and conveniently used in Japanese restaurants and in outdoor fields in Europe and U.S.A.

New Industry

In Kochi Prefecture, there are many good raw materials and excellent human resources that can boast in the world as well as many companies possessing the advanced technology.

In Kochi Prefecture where we have been exposed to typhoons, tsunamis, damage from landslide sediment disasters, etc., we are making the best use of the know-how therefor and promoting the “Disaster-Prevention Industry” for civil engineering and machinery, stockpile products, etc. that are to play active roles in the pre-disaster, in-disaster and disaster-restoration fields etc. to fight against disasters and transmitting them both domestically and to the world.

It is an industrial field particular to the Tosa people who are full of ideas in turning weakness into a strength.

In addition, Kochi is the most forested prefecture in Japan, with 84% of the prefecture's land area covered by forests. The forestry industry has been thriving in Kochi for a long time, supplying high-quality lumber, and in recent years, the technology and products of companies in Kochi have been widely exported overseas, including many wood products that incorporate the functionality of lumber grown in Kochi.



Repair work subsidence bridge at Shimanto River



Kumiko Lunch Basket

INDEX

Message from President

Introduction of Kochi Prefecture

WIDE VARIETY OF PRODUCTS IN KOCHI PREFECTURE

INDEX

1

2

4

product name	company	page
INDUSTRIAL MACHINERY AND COMPONENTS		
Compact double head side milling machine CS150	Chuo-Seiki Co., Ltd.	6
Gun-Drilling Machine for Ultra-small Diameter (Equipped high precision built-in spindle motor) MKBG-500-1NC	Miroku Machine Tool, INC.	6
5 axis CNC tool grinder EPSILON Q (SQR-X8) :Deep hole drilling tool (SAMURAI)	RYOCO SEIKI CO., LTD.	7
Fine bubble diffusers	Sakamoto Giken Corporation	7
Offering well trained and qualified assembling, processing, testing skills for electrical parts.	Tosa Denshi Corporation	8
Cranes used for factories and warehouses	Ueta denki Co., Ltd.	8
Dry Polishing System	Ujiden Chemical Industry Co., Ltd.	9
Double-head Side Milling Machine WH480A, 530A	Wada Kikai Co., Ltd.	9
YZ-8WR numerically-controlled vertical milling machines	YAMASAKI GIKEN CO., LTD.	10
AGRICULTURAL MACHINERY		
Cultivator "Saisaku"	Sasaoka Co., Ltd.	10
VF800 vegetable bagger	Taiyo Co., Ltd.(E&A division)	11
KIREI Stainless Steel Duckboard	U-CHIKA CO., LTD.	11
CIVIL ENGINEERING MACHINERY		
Hydraulic Eco-Cutter	IIDA Tekko Co., Ltd.	12
SAIBARA-10:Unit-type Concrete Molding Machine	Saibara Iron Works Co., Ltd.	12
Powerful Crane for People and Eco Friendly	SKK Corporation	13
CONCRETE PUMP 160-40-8	SYMTEC CO., LTD.	13
Man-portable in-ground concrete forms	Tamtec Co., Ltd.	14
Marine Crane	TSUKASA JUKI Co.Ltd.	14
ENVIRONMENTAL AND BIOMASS MACHINERY		
Biomass Eco Burner	AKATSUKI INDUSTRIAL CO., LTD	15
Wastewater treatment system for highly concentrated sewage(Touchstone System)	Aqua System Co., Ltd.	15
"RYUZOKUN" twin-die pelletizing machines	KAKIUCHI CO., LTD.	16
Power Suction Work Truck	KANEMATSU ENGINEERING CO., LTD.	16
KH-35 humidifiers/air purifiers	KOWADENSHI Company, Limited	17
Kowa Clean 20 electrolysis equipment for generating acidic Electrolyzed water	KOWATEC Co., Ltd.	17
Ligneous Pellet Manufacturing Machine	Tosatech Co., Ltd.	18
ECOZON	TOSA TOYO Co., Ltd.	18
OTHER MACHINERY		
Auto weighing & packaging system	Mitsuwa Sangyo Co., Ltd.	19
Internet automated feeding system "Feed Robot"	Pacific Software Development Co., Ltd.	19
PTM-F1 fully-automated non-stop wet-wipe folding machine	Shinwa Giken Company, Limited	20
DISASTER PREVENTION PRODUCT		
Geo Drain SPD method for soft ground improvement	CHIKAMI MILTEC INC.	20
"α-Shine Plate" Ultra-High Luminance Photoluminescent Emergency Exit Sign	DAISEN Co., Ltd.	21
Press-in Methodology with the Silent Piler™	GIKEN LTD. Tokyo Head Office	21
Evacuation Backpack "Kuroshio"	Interest-Production	22
Genkidayo Safety Notification System	IT PRODUCT CO., LTD.	22
Foliage Plant with Emergency Kit	Iwaya Co., Ltd.	23
Self-Propelled Amphibious Dredging Vehicle	Kochi Marutaka Co., Ltd.	23
NS Net(Deteriorate Concrete Prevention Net)	Nishinomiya Sangyo Co., Ltd.	24
Water level monitoring systems	OSASI Technos Inc.	24
Disaster Relief Toilet 2-ways Daichi-kun	Shikoku Jokan Co., Ltd.	25
LED solar security light with seismic sensed auto-unlock key box and evacuation shelter sign board	SHIMA INDUSTRIES CO., LTD.	25
Large prefabricated retaining wall "Guardian"	Shimanto Concrete Co., Ltd.	26

product name	company	page
Cstream-1 High-performance, Ultra-compact Turgo Turbine Generator	SKY ELECTRONICS CO., LTD.	26
Blue Sea Silt Fence	Takashina Life Preservers Co., Ltd.	27
Hyakusanchin Tofu beancurd Jerky(Emergency food)	Tanaka Shoku Co., Ltd.	27
PALA Lead Pipe Solar Guide Light	Tosatsushin Co., Ltd.	28
Special Elastic Rubber TS Seal	TS-Seal Co., Ltd.	28
Easy Stretcher	Yoshimura Denso Co., Ltd.	29
PAPERMAKING		
"MEDIPAD STRAIGHT" disposable diaper pad type	Chikazawa Paper Company, Limited	29
Face Mask Inner Sheet	FUJI PAPER CHEMICAL CO., LTD.	30
Lira Single toilet rolls(60 per case) , Lira Double toilet rolls(60 per case)	HAYASHI COMPANY, LIMITED	30
TOSAWASHI(TENGUJO PAPER) Japanese paper	HIDAKA WASHI CO., LTD.	31
Nanofiber Nonwoven Fabrics	Hirose Paper Mfg. Co.Ltd.	31
Avonlea Keith moisturizing paper	Kawano paper Co., Ltd.	32
Disposable Wet Wipes(MINIPACK TOWEL)	MINIPACK CO., LTD.	32
Laminated Japanese Washi Mask Case	MORISA CO., LTD.	33
Create Original Goods	Motoyama Printing.co.ltd. Paper message Department.	33
Four-sided untrimmed adhesive label	NAIGAITENGUCHOUSHI CO., LTD.	34
Skin Care Sheet with Paper Mulberry (for face, for décolleté and for skin around eyes)	Sansai Co., Ltd.	34
"MY WET" sanitizing sheets	Sansho Shigyo Co., Ltd.	35
SUN MORE NA(ULTRA-FINE ACRYLIC NON-WOVEN FABRIC:FOR WIPING)	Sanwaseishi Co., Ltd.	35
Adsorption sheet "Type FK"	Techno Hirose Co., Ltd.	36
Maximum size, maximum absorbency urine pad 1800	TOYOTOKUSHI CO., LTD.	36
PAPER WASTE	Wako Paper Co., Ltd.	37
WOOD PRODUCTS		
Genuine Domestically-made Bamboo Laminated Wood	COSUMO KOBO CO., LTD.	37
monacca	ECOASU UMAJIMURA CO., LTD.	38
HINOKI WOODEN CHIPS	GROWING	38
"Nandemo Noruzo" (Heavy staff loadable)	Ikegawa Mokuzai Kogyo Co., Ltd.	39
Hinoki Chips/Hinoki no Kaori	Kochi Seiko Co., Ltd.	39
High Class Novelty Made of Natural Wood	Miroku Technowood Co., Ltd.	40
Wood wool(excelsior)	Toda Shoko Incorporated	40
KUMIKO LOAD BEARING WALL	TOSA KUMIKO Co., Ltd.	41
Cutting board "SUGURE"	TOSARYU Corpration	41
OTHER PRODUCT		
HiTOKi Gold Stretch Eye Mask	Amenity Company, Limited	42
Aroma oil of Yuzu,Yuzu extract distilled water	ASAHI FRESH CO., LTD.	42
Jigging Lure & Rods Garage Nagi	DEEPARS FACTORY CORPORATION	43
Mass Flow Controller/Gas Mixer	FCON CO., LTD.	43
Ethic and Organic way of living is our faith and responsibility: "SaFo"	Heart Co., Ltd.	44
SAKON+	Hokiyama Cutlery Co., Ltd.	44
IC Bordeaux(Copper fungicide)	Inoue Calcium Corporation	45
Red coral praying beads	Kensen35 CO., LTD.	45
PAN OISHIIIMAMA(Keep Bread Delicious)	KINOUSOZAI Company,Limited	46
Repellent Spray against Hornets	KINP CO., LTD.(Kuroshio Institute of Natural Product chemistry)	46
Shoyaku No Meguriyu(Crude Drug Beauty Bath Powder)	Matsuda Phamaceuticals CO., LTD.	47
3D Figure Modeling	m.e.works inc.	47
Jewelry Box	Rdesignstyle	48
Electrolytic hydrogen water purifier "TRIM ION GRACE"	Torim Electric Machinery Corpration	48
TOSA santok forged knives(Nickel Damascus steel 33 layer VG10)	Toyokuni Co., Ltd.	49
GS bacteria	Ueta Microbes Co., Ltd.	49
Precious Metal Evaporation Deposition Materials(for pellets or shots)	YAMAKIN CO., LTD.	50

Compact double head side milling machine CS150



Ideal for 4-sided and 6-sided machining of mold bases and block nesting materials.

Its easy control; the automatic operation contributes to cost reduction; and it is adaptable to high-mix, low-volume applications. It reduces idle time with its agility from small sizes. The compact design takes installation space into consideration. It has safe design and full cover specifications. Underside surface deburring and coolant for cutting are standard features.

✓ Delivery Records

- Major plate manufacturers in Japan and overseas
- CS Series : December 1997 to June 2020, 240 units

📖 Other Information

- CS150 / width 7mm to 150mm, length 7mm to 150mm, height 3mm to 70mm
- CS300 II / width 15mm to 300mm, length 15mm to 300mm, height 5mm to 140mm



Chuo-Seiki Co., Ltd.

☎ +81-88-845-1373 🏢 +81-88-845-9001

📍 1-8-37 Ikkinamimachi, Kochi-shi, Kochi Prefecture 781-8135, Japan
🌐 <http://www.chuo-seiki.co.jp>
✉ nakano@chuo-seiki.co.jp

Gun-Drilling Machine for Ultra-small Diameter (Equipped high precision built-in spindle motor) MKBG-500-1NC



First gun-drilling machine that enabled ultra-small deep hole drilling in Japan.

Achieved high accuracy and rigidity by adopting a built-in spindle motor drive system that integrates the components of the spindle motor into the spindle system.

Improved reliability enables ultra-small deep hole drilling of 1mm or less at 20000 revolutions per minute spindle speed.

- Achieved high rigidity specifications, due to heat and vibration resistant design at high-speed rotation.
- High-precision machining is possible at high speed condition by rotating both the workpiece and the gun-drilling tool.
- The gun-drilling machine enables discharging debris which caused by ultra-small diameter machining smoothly, by setting the maximum discharge pressure from the drill as 20Mpa.



✓ Delivery Records

Automotive parts machining, mold machining, hydraulic machinery parts machining, aircraft industry parts machining, electrical and electronics industry parts machining

📖 Other Information

Kochi Prefecture Local Industry Award, 2020
Main specifications : Machining diameter 0.9 to 5mm,
Maximum machining length : 500mm
Workpiece rotation device
(workpiece gripping range $\phi 1$ to $\phi 75$)

Miroku Machine Tool, INC.

☎ +81-88-862-1136 🏢 +81-88-862-2898

📍 836 Hie, Nankoku-shi, Kochi Prefecture 783-0054, Japan
🌐 <https://www.miroku-gd.co.jp/en/>
✉ kochi@miroku-gd.co.jp

5 axis CNC tool grinder EPSILON Q (SQR-X8) Deep hole drilling tool (SAMURAI)



Small-diameter indexable type deep hole drilling tool that makes tool regrinding even easier (tool grinder)

5-axis CNC tool grinder EPSILON Q (SQR-X8)

1. Compatible with a wide variety of tool shapes
2. Fully automatic sensing system
3. Interactive and easy data setting
4. Space saving and free layout
5. Automatic sludge disposal system



Deep hole drilling tool Samurai

1. Breaker shape for excellent debris disposal
2. Special clamp structure (Fujiyama clamp design)
3. Excellent toughness and use of cemented carbide for all kinds of work materials



☑ Delivery Records

Users of cutting tools in Japan and overseas

📖 Other Information

Compact body, easy tool resharpener for anyone
On sale now!
Please click on the following URL to request a catalog

☑ Delivery Records

Deep hole drilling users in Japan and overseas

📖 Other Information

The insert tip makes it easy for anyone to change the cutting edge.
On sale now!
Please click on the following URL to request a catalog

RYOCO SEIKI CO.,LTD.

☎ +81-889-54-0221 🏢 +81-889-54-0170

📍 2085-2 Kaminokae, Nakatoso-cho, Takaoka-gun, Kochi Prefecture 789-1302, Japan

🌐 <http://www.ryoco.co.jp/>

✉ ryocoseiki@ryoco.co.jp

Fine bubble diffusers



High-quality micro-bubbles (fine bubbles) are produced by mixing a liquid (such as water) with a gas (such as air)

Fine bubbles (micro-bubbles) - very small bubbles with a diameter of 100 μ m or less - have a variety of applications, including water purification, sewage treatment, and boosting dissolved oxygen. The fine bubble diffuser developed by Sakamoto Giken in cooperation with the Kōchi College of the National Institute of Technology:

- Can handle high flow levels (compliant with JIS 15A-50A)
- Will operate so long as it has a pressurized water source
- Is compact and can be added to existing water supplies without taking up too much space
- Has no moving parts
- Requires little long-term maintenance



Fine bubble diffuser



Fine bubbles being generated in water



Easy to install

☑ Delivery Records

Customers include Kōchi aquatic products producers, farmers, and water treatment professionals



Sakamoto Giken Corporation

☎ +81-88-864-4277 🏢 +81-88-864-4279

📍 941-6 Kogome, Nankoku-shi, Kochi Prefecture 783-0022, Japan

🌐 <https://www.sakamotogiken.com/>

✉ fb@sakamotogiken.com

Offering well trained and qualified assembling, processing, testing skills for electrical parts.



Reliable manufacturing skills for both prototype production and mass production.

■ OUR BUSINESS

Custom processing of circuit boards & control panels.
Assembly of electrical parts and circuit boards, various devices and integrated performance tests, such as LCD.
Outsourced production of various parts and devices in Vietnam.
R&D function and sales of newly invented products.



■ WE OFFER

SOLDERING: Reliable and proficient soldering technology. We implement the soldering skill certification system by advanced micro soldering certifier.

SMT: Small, Large, Atypical Parts, High-density Parts mounting technology such as 0402 chip and BGA.

PROCESSING & ASSEMBLING: High mix and small volume production with dustproof clean rooms and clean benches. (Clean room area: 1075m² in total)

INSPECTION: Microscope and visual inspection (certification system), inspection for circuit (ICT), power (FC). Polarity and solder inspection by image inspection device.



Tosa Denshi Corporation

+81-88-850-2600 +81-88-850-2601

61-10 Takaokacho Otsu, Tosa-shi, Kochi Prefecture 781-1102, Japan

<http://www.tosadenshi.co.jp/>

info@tosadenshi.co.jp

Cranes used for factories and warehouses



Prevent machinery malfunction with automatic remote control system!

- ① "High quality and quick delivery crane" manufactured with crane automatic welding system.
- ② Automatic cargo swing control function for "safe, comfortable, and swift transporting of cargo"
- ③ "Breakdown-proof industrial machinery" with automatic maintenance and control system using IoT.

☑ Delivery Records

Various industrial machinery makers, etc.

📖 Other Information

For over 30 years, we've worked with crane operators.
By combining our expertise with the latest technology, we've developed the only crane you'll ever need again.
We'll continue to design "cranes anyone can operate easily and speedily" under our motto, "Less time on the crane means more time for productivity".



Ueta denki Co., Ltd.

+81-88-841-1709 +81-88-841-1466

2-13-43 Seto, Kochi-shi, Kochi Prefecture 781-0250, Japan

<http://ueta-denki.com/>

uetadenki@ebony.plala.or.jp

Dry Polishing System



Clean dry polishing system, able to execute operations from rough polishing to mirror polishing

The TOSALIT DR series comprises dry polishing media for dry barrel polishing process without using water. This makes it possible to downsize wastewater treating equipment and enhance polishing workability. Environmental burden to rivers etc. by wastewater may be reduced through employment of a dry polishing process, thus making it possible to implement the environmentally friendly production process. With abundant media sizes and polishing machines made available so that operations from rough polishing such as deburring to mirror polishing may be handled, we propose a polishing system to meet your needs, from both aspects of dry polishing machines and dry media.



Delivery Records

- High-energy centrifugal barrel: DC-1000, DC-800 and DC-400 To manufacturers of golf equipment, musical instruments, wrist watches and medical metal fittings; the dental industry; and others.
- Centrifugal Disc system: DR-130 and DR-50 To manufacturers of forgings, pressed parts, automobile components, faucets, etc.

Other Information

- High energy Centrifugal barrel lineup DC-1200, -1000, -800, -400; Models DCB1200, -1000
- Centrifugal disc system lineup Models DR-230, -130, -50 We propose the most suitable polishing machine and abrasive for the purpose of polishing. Contact Mr. Tanaka of the Sales and Marketing Department for inquiry.

Ujiden Chemical Industry Co., Ltd.

+81-88-832-6162 +81-88-832-6165

5-7-34, Sanbashi-dori, Kochi-shi, Kochi Prefecture 781-8010, Japan

<http://www.ujiden-net.co.jp/>

tosa@ujiden-net.co.jp

Double-head Side Milling Machine WH480A, 530A



WH series models—now easier to use for small to large sizes

- Minimum working size: 5 (H) × 10 (W) × 50 (L) mm
- Maximum working size: 150 (H) × 535 (W) × 535 (L) mm
- High-precision and high-speed multi-face machining with high output and high rigidity!
- High-precision heavy cutting is possible based on trust as a long-lasting and stable mass-production machine made of heavy base castings.
- Parallelism is secured with movement of the table between opposing main shafts.
- Optimum for small-volume production in large varieties.
- Vertical and right-angle corrector for the clamping device.
- 3-speaker curvic coupling on the index table.
- One-touch input of material dimensions for offline setup during works. (OP)



Delivery Records

- In Japan: Daido Kogyo Co., Ltd., Daido Amistar Co., Ltd., Fujimaki Steel Co., Ltd., Union Plate Co., Ltd., Ochi Co., Ltd., Yugengaisa Kittou, HCP Product, Ltd., etc.
- Abroad: Korea, France, China and Thailand

Other Information

For detailed information, refer to our Website. Concerning your company's "We wish we had...!! ⇒ Special purpose machine tool", contact us each time.



Wada Kikai Co., Ltd.

+81-88-846-4848 +81-88-846-4849

249-1 Kureno, Kochi -shi, Kochi Prefecture 780-0001, Japan

<http://www.wadakikai.com/>

machine@wadakikai.com

YZ-8WR numerically-controlled vertical milling machines



Suitable for single unit production !

Next generation general purpose milling machine

Combining a mechanically-assisted manual Z-axis handle and a rack-and-pinion spindle feed mechanism for comfortable manual operation with a design that can't be beat in terms of ease-of-use and letting you get close to your work, the YZ-8WR, our flagship product, lets you power quickly through piecework. The handles, levers, and switches are located in just the right spots to make the machine act as an extension of your body, letting you work for long hours without stress. While still a manually-operated two-axis machine, the YZ-8WR features a "work guidance system" that can be instantly engaged by switching it on and entering some numbers, taking the guess-work out of milling curves, diagonals, pockets, and the like.

Delivery Records

Customers include equipment and parts manufacturers and machinists, as well as manufacturers, governments, and technical-vocational schools nationwide.

Other Information

Demonstrators are installed in showrooms in our Saitama, Nagoya, and Ōsaka offices, where they can be viewed by appointment. We are also always ready to welcome visitors to our factory.

YZ-8WR Machine Specifications	
Table Size	1400 x 400mm
Travel (X x Y x Z)	850 x 400 x 52mm
Spindle Speed	55 ~ 2200rpm
Tapered Bore	7/24 Taper ISO No.50
Rapid Traverse Rate	6000mm/min
Spindle Motor	3.7kw
Floor Space Requirement (W x D x H)	2950 x 1870 x 2490
Machine Weight	Approx. 3700kg



YAMASAKI GIKEN CO., LTD.

+81-887-57-6222 +81-887-57-6223

Techno Park2, Tosayamadacho, Kami-shi, Kochi Prefecture 782-0010, Japan

<https://www.yamasakigiken.co.jp/>

yzinfo@yamasakigiken.co.jp

Cultivator "Saisaku"



Saisaku is the legendary cultivator of the famous and successful "Suzue" machine.

It's equipped with the normal/reverse rotary shaft drive mechanism for high utility with minimal power loss. Select from 10 different rotary speeds according to the task, soil quality, and field conditions. It's suitable for a variety of uses, from high-speed to low-speed. The handle features an emergency switch that can stop the engine with a single press. The handle can be manually adjusted between 4 different heights. The main clutch lever has a mechanism that can be turned on and off while holding the handle, which makes it easy to operate. We have wide range of attachments designed for diverse vegetable production, such as our unique multi-groove ditching machine suitable for planting gingers and lilies.



Delivery Records

JA ZEN-NOH Kochi Dealership

Sasaoka Co.,Ltd.

+81-889-49-0341 +81-889-49-0744

717 Tachime, Uranouchi, Susaki-shi, Kochi Prefecture 785-0164, Japan

<http://www.k-sasaoka.co.jp/>

grc-g@k-sasaoka.co.jp

VF800 vegetable bagger



Bag soft vegetables—spinach, komatsuna, chrysanthemum leaves, mizuna, shungiku—at high speed

- Unparalleled work speed (actual speed 600 bags/hour)
- Noise-dampening optimized for indoor installations
- A built-in vacuum pump for reliable bag handling
- Wet vegetables can be bagged without drying
- Bag size can be adjusted at the touch of a button, without need for tools

✓ Delivery Records

Over 850 units (including the earlier VF700 model) to sold in 45 Prefectures nationwide

📖 Other Information

Compatible bag sizes
Width: 180–280 mm
Length: 280–450 mm (rectangular or trapezoidal)
Sold through JA and makers of agricultural equipment and packaging materials



Taiyo Co., Ltd. (E&A division)

☎ +81-88-846-1230 📠 +81-88-846-4470

📍 3950 Nunoshida, Kochi-shi, Kochi Prefecture 781-5101, Japan

🌐 <http://www.k-taiyo.co.jp/>

✉ kankyoku@k-taiyo.co.jp

KIREI Stainless Steel Duckboard



Truly lightweight and strong! Smooth pig development like a new swinery!

- Quick and clean dropping of feces
- Stainless steel that does not soak up pathogens
- Almost no sticking of feces
- Only a small amount of water is needed for cleaning!
- Light weight and fully interlocking mechanism
- Super easy to install, much less labor required
- Disease prevention is the biggest benefit

✓ Delivery Records

Haruno Corporation, Kimura Nousan Shoji, Ichikura Shoji, Japan Trading Corporation, JA Minamisatsuma Agricultural Cooperative

📖 Other Information

Available in lengths from 1.2m to 2.2m and weights from 6.3kg to 11.6kg as a series product
Width: 360mm for piglets, 375mm for fattening



U-CHIKA CO., LTD.

☎ +81-887-38-5508 📠 +81-887-38-4346

📍 448-7 Naharicho Otsu, Aki-gun, Kochi Prefecture 781-6402, Japan

🌐 <http://u-chika.com/>

✉ k-uchika@shirt.ocn.ne.jp

Hydraulic Eco-Cutter



Cutting and splitting industrial waste such as waste plastic, vinyl, tires, and wood

Eco Cutter is a powerful industrial waste treatment machine for cutting wastes such as plastic, vinyl, tires, and wood. It is equipped with excellent mechanisms such as an inverted V-shaped cutter structure, four-sided rotating cutter blades, and a cutter blade adjustment mechanism.

The hydraulic type in particular can tilt (oscillate) at a wide angle, making it easy to grab objects from low positions or from piles of waste. It can also be used for feeding into a crusher after cutting, greatly improving work efficiency. In addition, there is less stress on the shovel arm during cutting, and maintenance costs can be reduced after installation.

The Eco Cutter was born from an idea from the field, and has been widely used and well received at industrial waste disposal sites throughout Japan.

Delivery Records

The product has been delivered to industrial waste treatment plants throughout Japan through excavator manufacturers and trading companies.

Other Information

- Target excavators: 6 tons to 22 tons (0.25m³ to 0.8m³)
- A demo unit is available for trials.



IIDA Tekko Co.,Ltd.

+81-88-842-2496 +81-88-842-2498

3111-2 Nagahama, Kochi-shi, Kochi Prefecture 781-0270, Japan

<http://kk-iida.com/>

eigyo@kk-iida.com

SAIBARA-10: Unit-type Concrete Molding Machine



Unit-type concrete molding machine having “high function”, “high quality” and “low price” realized.

- Because the product is manufactured consistently in the factory and shipped as a completed form of product, it is possible to supply the product with high quality and at a low price.
- Because the product is unit type, loading, transportation and installation is easy. It is possible to start operation with the product soon after the product is arrived and installed.
- Because concrete supply devices are not required, it makes it possible to reduce the cost dramatically.

Delivery Records

Domestic: Concrete product manufacturing plants in all areas of the country

Overseas: China and Taiwan (expanding sales channels in Southeast Asia)

Other Information

We accept orders to produce products to meet customer's requests. We are expanding our business domestically and abroad. Registered product for disaster prevention under Kochi Prefecture (registered No.: 30Kochibosan No.7)



Saibara Iron Works Co., Ltd.

+81-88-852-1188 +81-88-852-5254

895 Takaokacho Kou, Tosa-shi, Kochi Prefecture 781-1101, Japan

<http://www.saibara-iron.co.jp>

saibara@peace.ocn.ne.jp

Powerful Crane for People and Eco Friendly



Next-generation crane for environmentally friendly and efficient operations

In port and harbor civil engineering work, there are many jobs to protect the safety and security of people's lives, such as dredging to clear a path for ships by digging out sediment from the sea bed with a grab bucket, and installing breakwaters and wave dissipating blocks to prevent tsunamis from crashing the land. Since our company founded, we have been manufacturing full-slewing dredging crane and which is used as an active role in port and harbor civil engineering works. We have developed a new hybrid grab dredging crane and it aims to improve fuel efficiency and for environmental friendly. This product reduces fuel consumption and exhaust gas emissions by using the energy generated during the lowering of the grab bucket during dredging operations to assist use during hoisting.

Delivery Records

The company has delivered a total of over 5,000 SKK cranes to marine contractors nationwide and also has experience exporting to Asia.

Other Information

Model:SKK-1600GE
Type:Electric-Driven Grab Dredging Crane
P.L:30m³ (Medium Type)
Boom Length:32m
Dredging Depth:Maximum 85m below the water level



SKK Corporation

+81-88-842-6262 +81-88-842-4023

1-3 Yokohama Nishimachi, Kochi-shi, Kochi Prefecture 781-0242, Japan

<https://www.skk-crane.co.jp/>

sales@skk-crane.co.jp

CONCRETE PUMP 160-40-8



Small, durable, powerful, high suction efficiency, smooth pressure feed

The product is a concrete pump with the strongest performance condensed into the smallest package. It is equipped with an ideal pumping mechanism that enables the pumping of low-slump ready-mixed concrete (slump of 8cm, maximum aggregate size of 40mm) and the horizontal pumping of ordinary ready-mixed concrete for 800 m. It can pump high viscosity materials, mud, water, mortar, and light or heavy concrete. In addition to concrete pumping and spraying in the civil engineering field (for tunnels, dams, bridges, retaining walls, landslides, steel tower foundations, slopes, deep foundation piles, etc.), the product has a wide range of applications in the industrial field, including pumping and spraying of castables (amorphous refractory), pumping of ground improvement materials (liquefaction countermeasures, etc.), and pumping of mud and sludge.

Delivery Records

Construction companies across Japan including Obayashi Corporation, Kajima Corporation, Shimizu Corporation, and Taisei Corporation
Steel companies such as Nippon Steel Corporation and JFE Steel Corporation

Other Information

Our company is a manufacturer of concrete pumps and we also rent our own machines. Full after-sales support is available.



SP-70CB



SP-35E II



SP-60E

SYMTEC CO.,LTD.

+81-88-883-1755 +81-88-883-1754

2-6-23 ikkuminamimachi, Kochi-shi, Kochi Prefecture 781-8135, Japan

<https://www.symtec.co.jp/>

info@symtec.co.jp

Man-portable in-ground concrete forms



Light, sturdy, adhesive forms that adhere well to concrete

Light, thin, and with high flexural strength and rigidity for use as joint forms, this in-ground formwork can be installed by manual- power alone, without heavy machinery. Cutting is easy, reducing construction time and cost. Products can also serve as in-ground forms for constructing drain (culvert) covers.



In-ground concrete drain-covers



In-ground forms used as a substitute for wooden joint forms

✓ Delivery Records

Used in over 1,650 locations nationwide, primarily for erosion control and landslide prevention projects including improvements, landslide barriers, and retaining walls

📖 Other Information

Registered with the Ministry of Land, Infrastructure, Transport and Tourism NETIS database

Tamtec Co., Ltd.

☎ +81-889-42-2405 🏢 +81-889-42-2460

📍 5510 Onogokou, Susaki-shi, Kochi Prefecture 785-0030, Japan

🌐 <http://www.tamtec.jp/>

✉ office@tamtec.jp

Marine Crane



TSUKASA TECHNOLOGY has great performance on the ocean.

-Has been developed with our On-site user-

Marine crane, that handling gravel, stone and crashed stone is necessary for ocean public works.
We have developed two systems for handling bucket on marine crane.
High power "LGP" series, and Electronic-Pneumatic control "EP" series.

High-Power system [LGP-Series]

Our original "Cam" system controls the valves.

And Lever input is multiplied by Pneumatic power.

Therefor, although Lever control feeling is light and smooth, machine makes high power.

And braking system with "P1" valve achieves clear feeling at lever control.

Electronic-Pneumatic system [EP-Series]

Computer controls complicated bucket handling works.

So, operator can control the crane with compact joystick handle.

This system makes possible to more easy, comfortable and safer operation.

Operator can acquire operating method in shorter period.



Operating seat for LGP series (with 4 levers)



Operating seat for EP series (with 2 levers)



✓ Delivery Records

Totally about 820 units since 1984. Delivery destinations: All Japan

TSUKASA JUKI Co.Ltd.

☎ +81-88-842-2221 🏢 +81-88-842-2224

📍 5033-21 Nagahama, Kochi -shi, Kochi Prefecture 781-0270, Japan

🌐 <https://www.tsukasa-juki.com/>

✉ entrance@tsukasa-juki.com

Biomass Eco Burner



Contributing to the global environment and regional economy through woody biomass fuel

This is a burner fueled by sawdust. The combustion method entails generating a swirling flow of air in a combustion chamber heated by a heavy oil burner for ignition, and increasing the contact area with the air by spraying and scattering sawdust to increase combustion efficiency. Once stable combustion conditions are achieved, the supply of heavy oil is stopped, and sawdust alone is used to create a chain reaction of combustion. The electric control automatically adjusts the amount of air for combustion and the amount of sawdust according to the temperature in the combustion chamber to ensure optimal combustion conditions. The system can automatically operate intermittently, burning and shutting down, according to signals from connected devices (such as boilers and dryers) to cope with rapid temperature changes. We have delivered models ranging from 200,000 kcal/h to 1,650,000 kcal/h, and high output of 2,000,000 kcal/h is also possible.

Delivery Records

House heating systems for agriculture, heating systems for eel farming, fuel conversion systems for construction waste, coffee lees drying systems, in-house sawdust drying systems, total of 15 units

Other Information

Biomass eco-burner installation and use conditions

- It should be possible to procure sawdust fuel.
- For sawdust procurement, sawdust and lumber from a lumber mill are ground into sawdust using a sawdust mill.
- Use sawdust fuel that has been dried to a moisture content of 10% or less.



AKATSUKI INDUSTRIAL CO., LTD.

301-1 Furukawa, Yoshikawacho, Konan-shi, Kochi Prefecture 781-5242, Japan

<http://www.k-akatsuki.co.jp>

office@k-akatsuki.co.jp

+81-887-57-1831 +81-887-57-1836

Wastewater treatment system for highly concentrated sewage (Touchstone System)



We will contribute to the development of environmental technology for a clean global environment.

Our touchstone system is a highly efficient method for treating organic wastewater and is superior in terms of running costs. The main features of the system include: a) a highly efficient oxygen supply by aeration of the contact material, which is mainly made of natural volcanic ash and andosol, b) air bubbles rising directly between the filter media, which prevents clogging of the filter media, the biggest drawback of contact oxidation, c) ease of attaching a biological film to natural silicon dioxide, enabling highly efficient treatment, and d) a high self-digestion rate by various microorganisms, resulting in about half the amount of sludge generated compared to the conventional standard activated sludge method.

Delivery Records

Food manufacturing industry in general, food-related raw material processing plants, slaughtering and butchering plants, paper mills, dyeing plants, etc.



Aqua System Co., Ltd.

5-17 Harigi-minami, Kochi-shi, Kochi Prefecture 780-8089, Japan

<http://www.aqua-water.jp/>

aqua-o@axel.ocn.ne.jp

+81-88-843-3666 +81-88-843-3669

“RYUZOKUN” twin-die pelletizing machines



Environment-friendly resource recycling technology for pelletizing organic fertilizer and the like

The simple construction of the twin-die RYUZOKUN ensures that breakdowns are infrequent and its ruggedness unrivalled. Pellets are formed at low temperatures, ensuring that the source material remains relatively uncompacted for pellets in which the micro-organisms and enzymes needed for high-quality bio-fertilizer can thrive. With available automated operation and low power consumption to keep operating costs low, it boasts cost performance unrivalled by our competitors' pelletizers and in 2009 was awarded the Kōchi Prefectural Eco-Industry Grand Prize. The brand is a national leader among poultry farmers.

✓ Delivery Records

Over 270 sold to customers, such as poultry, cattle, and pig farmers, composting centers, and municipal sludge regeneration processors both at home and abroad. KAKIUCHI has also contracted with JICA to participate in technology dissemination demonstration projects for livestock farmers in Thailand.

📖 Other Information

- KAKIUCHI has created a system in which customers can bring us the raw materials of their choice and test the equipment before purchase.
- KAKIUCHI has been awarded Shikoku Economy, Trade, and Industry Division Director's Prize in the 7th National Manufacturing Competition.



KAKIUCHI CO., LTD.

☎ +81-88-866-2848 🏢 +81-88-866-0261

📍 391-8 Okocho Nakajima, Nankoku-shi, Kochi Prefecture 783-0049, Japan

🌐 <https://www.kk-kakiuchi.co.jp/>

✉ info@kk-kakiuchi.co.jp

Power Suction Work Truck



As Japan's top manufacturer, we are constantly pursuing the ideal design for the power suction work truck.
We meet user needs with a wide range of models, so the user can select the optimal vehicle that suits the intended usage conditions.

Power Suction Work Truck is a high-performance suction truck that applies powerful suction for solids and liquids, and it is capable of suctioning for a depth of about 30m and a distance of more than 100m. It is mainly used for suctioning dirt or sludge at construction sites or sewer cleaning sites, and when disaster such as earthquake or flood happens, it is also actively used for recovery work.

✓ Delivery Records

In Japan: Approx. 550 units in 2019
Customer: Industrial waste disposal company,
Steel manufacturing company, Electric power company,
Shipbuilding company, MLIT, NEXCO, municipalities
Overseas: Total 242 units from 1976 to 2019.
We have sales records all over the world, mainly in Asian countries.

📖 Other Information

Power Suction Work Truck
Flow rate: 10-120 m³/min.
Vacuum pressure: -96kPa (-720mmHg)
Tank volume: 3-10 m³ (Differs according to the chassis size)



KANEMATSU ENGINEERING CO., LTD.:

☎ +81-88-845-5511 🏢 +81-88-845-5211

📍 3981-7, Nunoshida, Kochi-shi, Kochi Prefecture 781-5101, Japan

🌐 <http://www.kanematsu-eng.jp/>

✉ soumu@kanematsu-eng.jp

KH-35 humidifiers/air purifiers



An all-season humidifier and air purifier!

The KH-35 humidifier/air purifier combines a humidifier with an electric dust collector that cleans the air. The humidifier features moisture-permeable materials that do not generate excess water (steam), allowing it to be used in locations that must be kept dry. The economical dust collector uses electricity to clean the air. The unit can be used all the year round.

☑ Delivery Records

Perfect for such applications as art galleries, cultural institutions, or offices or medical facilities equipped with precision machinery. Use is increasingly common in ordinary offices as well.

📖 Other Information

Dust collector: High voltage, two-stage charged electric dust collector
Humidifier: Permeable membrane humidifier
Odor reduction: Active charcoal filter
Weight: 58 kg
Dimensions (W×D×H, mm): 600×470×1130
Rated power supply: AC 100V, 50/60 Hz
Rated power consumption: 84/103W (50/60 Hz)
Coverage: 80m²
Currently recruiting resellers!



KOWATEC Company, Limited
Dai7-ekimaekankou Bld.
6F, 1-8 Ekimaecho, Kochi-shi,
Kochi Prefecture
780-0053, Japan
TEL: +81-88-802-6801
FAX: +81-88-802-6803
URL: <http://www.kowa-tec.co.jp/>
E-mail: sales@kowa-tec.co.jp

KOWADENSHI Company, Limited

☎ +81-88-804-6070

🏢 +81-88-804-6077

📍 2040-1 Wakamiya Otsu, Tamura, Nankoku-shi, Kochi Prefecture 783-0092, Japan

🌐 <http://www.kowa-elt.co.jp/>

✉ sales@kowa-tec.co.jp

Kowa Clean 20 electrolysis equipment for generating acidic Electrolyzed water



Electrolyzed water is a disinfectant approved by the Ministry of Health, Labor and Welfare as a hypochlorous acid solution for use as a food additive.

The Kowa Clean 20 generates hypochlorous acid (HClO, a weak acid) through the electrolysis of a solution of electrolytic fluid and tap water. Hypochlorous acid, a disinfectant approved for use as a food additive, can be used as a sterile disinfectant in food processing plants or the shared kitchens where school lunches are prepared. The product can also be used in social welfare facilities as a means of hygiene management to prevent infection. With the addition of an optional disaster-relief kit, it can quickly be converted for use preventing the spread of infection at evacuation centers in the event of natural disasters.



Used at Nankoku City Fire Department

☑ Delivery Records

Many units have been purchased by hospitals, dental clinics, medical centers, nursery schools, daycares, and food-preparation facilities.

📖 Other Information

Type: Direct connection to the water mains (wall mounted)
Weight: 2.8kg
Dimensions (W×D×H, mm): 270×140×270,
Output: 2.0ℓ / minute
Effective chlorine concentration: 10–40 ppm, pH 5.0–6.5
Price: Open
Currently recruiting resellers!

KOWATEC Co., Ltd.

☎ +81-88-802-6801

🏢 +81-88-802-6803

📍 Dai7-ekimaekankou Bld. 6F, 1-8 Ekimaecho, Kochi-shi, Kochi Prefecture 780-0053, Japan

🌐 <http://www.kowa-tec.co.jp/>

✉ sales@kowa-tec.co.jp

Ligneous Pellet Manufacturing Machine



Compact and high-performance with the pelletizer flat die method

Taking advantage of the know-how we have been developing for many years as a precision parts manufacturer, we have secured the body and the structure with high reliability and durability. Further, with an emphasis placed on economic efficiency, it is possible to perform management and operation by one person and the maintenance such as replacement of consumables is also simple and easy. Decrease in the operating efficiency will be limited to the minimum as it is possible to delivery replacement parts in a short time. Without being limited to the ligneous substance, the materials that have been difficult to pelletize conventionally such as bamboos, straws, coffee chaffs, paper pulp, PKS and RPF may be pelletized.



✓ Delivery Records

Major paper-manufacturing companies, Forestry cooperatives, Lumber producers, Beverage manufacturers, etc.

📖 Other Information

The 21st Kochi Prefecture Local Industry Grand Prize The 7th Eco Product Grand Prize

Tosatech Co., Ltd.

☎ +81-88-804-7500 🏢 +81-88-804-7501

📍 3-1065-69 Miwakotohira, Nankoku-shi, Kochi Prefecture 783-0087, Japan

🌐 <http://www.tosatech.com/>

✉ request@tosatech.com

ECOZON



Oil and grease decomposition(sterilization and deodorization) system in grease trap using ozone

Organic matter (oil) is treated by aerating the wastewater in the grease trap, taking advantage of the ability of ozone and oxygen atoms to decompose organic matter.

The product reduces the normal hexane value in wastewater and provides high deodorization and disinfection effects.

It is designed to reduce the stench and stickiness of the wastewater discharged from the grist trap, and is also environmentally friendly.

✓ Delivery Records

School lunch centers in Kochi Prefecture, elementary schools in Kochi City, elementary and junior high schools in Tokushima City (44 schools), various restaurants (including many in Tokyo), hotels (Kochi, Hyogo, and Fukuoka), hospitals, welfare facilities, supermarkets (Marunaka), etc.

📖 Other Information

We are conducting research to obtain a system patent under the guidance of Professor Shinichi Yamazaki, Department of Social Design Engineering, National Institute of Technology, Kochi College.

Obtained trademark registration No. 4672487 and design registration No. 1631276.



TOSA TOYO Co., Ltd.

☎ +81-88-845-2111 🏢 +81-88-845-2201

📍 1-11-50 Ikkinamimaci, Kochi-shi, Kochi Prefecture 781-8135, Japan

🌐 <http://www.tosatoyo.co.jp/>

✉ tosatoyo@axel.ocn.ne.jp

Auto weighing & packaging system



Weighing and packaging operations are completed with this system

- Automatic operation of weighing and packaging
The system is highly cost effective, as it operates automatically for processes ranging from weighing to packaging, with only one worker supplying products on the conveyor.
- Full range of optional equipment
Automation of cutting, weighing, and packaging is also possible by interlocking the weighing section with the slicer. In addition to weighing, counting machine specifications are also available, enabling use for industrial parts and frozen foods.
- Reduction of waste and loss
This reduced-sized, compact, and low-cost weighing system reduces the waste and loss of large, high-speed systems and enables the production of high-grade products.



Delivery Records

All kinds of food (including frozen food), agricultural products, marine products, meat, confectionery, industrial goods, etc.

Other Information

Weighing capacity: 15 shots/minute (varies depending on the shape, size and weight of the product)
Power consumption: 3-phase 200V 3.1kw
Installation dimensions: width 2420mm x depth 1800mm x height 1870mm
(*For a supply conveyor length of 1000mm)

Mitsuwa Sangyo Co., Ltd.

+81-88-866-4504 +81-88-866-4589

205-7 Okochi Takimoto, Nankoku-shi, Kochi Prefecture 783-0040, Japan

<http://www.mitsuwasangyo.com/>

eigy@mitsuwasangyo.com

Internet automated feeding system "Feed Robot"



Next-generation automated feeding system that fully utilizes IoT

Feed Robot is a system that uses IoT to reduce the amount of labor required for feeding and reduce food waste in aquaculture. The effect of reducing the amount of discarded food will also help improve the marine environment.

This product makes it possible to monitor and control remotely a fish tank using the internet by installing a fish sensor (ultrasonic) and water temperature sensor in the fish tank, and the condition of the fish can be checked regardless of the weather, both during the day or at night. In addition, the AI learning function and feeding control software make it possible to automatically control feeding machines by converting breeding know-how of producers into data. Feed Robot, an automated internet feeding system, is a next-generation feeding system that will revolutionize aquaculture methods. (Kochi Prefecture IOT Promotion Subsidy Project)

Delivery Records

22 units shipped to 3 companies

Other Information

For snapper farming



Pacific Software Development Co., Ltd.

+81-88-850-0503 +81-88-850-0573

105-22 Hongucho, Kochi-shi, Kochi Prefecture 780-0945, Japan

<http://pacificsoftware.co.jp>

sales@pacificsoftware.co.jp

PTM-F1 fully-automated non-stop wet-wipe folding machine



State-of-the-art equipment (patent pending) designed for reliability and speed

After cutting a roll of nonwoven fabric into two strips, folding each strip lengthwise, injecting liquid, cutting the strips into the correct lengths, and folding each length into a "V", this fully-automated machine segregates a set number of wipes, merges the two lines into one, and sends the product on for further processing (packaging).



Delivery Records

Production lines have been sold to makers of wet-wipes throughout Japan and exported to many countries overseas, including the United Kingdom, France, Italy, Germany, the Netherlands, China, Taiwan, Korea, and Thailand.

Other Information

We provide made-to-order processors tailored to our customers' needs.

Shinwa Giken Company, Limited:

+81-889-24-7772 +81-889-24-7722

3586-10 Okina, Hidaka-mura, Takaoka-gun, Kochi Prefecture 781-2152, Japan

<http://www.www.jp/sg/>

sg@www.jp

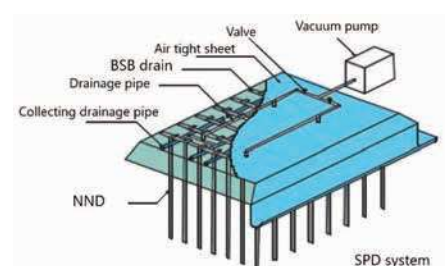
Geo Drain SPD method for soft ground improvement



A kind of Vacuum Consolidation Method with PVD which can avoid marine/micro plastic pollution.

Our ground improvement method and materials (PVD & PHD) which can reduce usage of sand/soil material has been contributed to reduce environmental destruction caused by infrastructure construction.

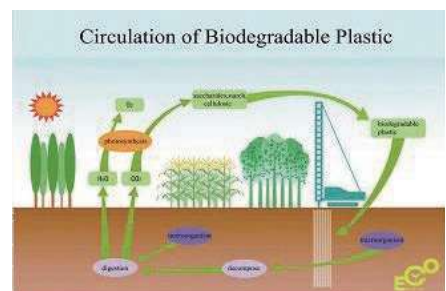
Although we can reduce environmental destruction by substituting natural sand by plastic materials, the plastic drain materials cause new environmental problem which called marine/micro plastic. We, more than 10 years ago, developed new and unique drain material which biodegrade in the soil after complete ground improvement.



"Geo Drain SPD Method" which uses our unique **biodegradable drain materials, NND (PVD) and BSB drain (PHD), can contribute sustainable infrastructure development** by preventing environmental destruction not only by usage of sand but also marine/micro plastic problem.

Other Information

Method is effective for soft clay soil
Maximum depth to improve is approximately 50m



CHIKAMI MILTEC INC.

+81-88-822-1181 +81-88-824-5729

1-6-3 Ohtesuji, Kochi-shi, Kochi Prefecture 780-0842, Japan

<http://www.c-miltec.co.jp/>

soumu@c-miltec.co.jp

“ α -Shine Plate” Ultra-High Luminance Photoluminescent Emergency Exit Sign



Evacuation measures that consume zero energy with state-of-the-art luminescence technology!

This is a light storage product based on the technology of the Alpha Flash series, which has the largest share of the Japanese market for high-intensity light-storing signs (fire-fighting equipment approved products). It uses newly developed light-storing pigments with excellent water resistance to meet JIS outdoor class II and Class I standards. Alpha Shine Plate is an ultra-bright luminous phosphorescent sign made of aluminum plate and acrylic resin (PMMA), which has a luminosity of outdoor class II even after 10 years of outdoor use. As a measure to clearly indicate evacuation routes and evacuation sites in the event of a Nankai Trough earthquake, the system is being used in approximately 500 locations in municipalities throughout Japan, including Kuroshio Town in Kochi Prefecture.

☑ Delivery Records

Kuroshio Town, Kochi Prefecture; Kesenuma City, Miyagi Prefecture; Hikone City, Shiga Prefecture; Nagaokakyo City, Kyoto Prefecture; Kihku Town, Ehime Prefecture; Izumozaki Town, Niigata Prefecture; Murakami City, Niigata Prefecture; Kamaishi City, Iwate Prefecture, etc.

📖 Other Information

JIS Z 9098 and JIS Z 9097 compliant. It is a product subject to emergency disaster prevention and mitigation project bonds.

A freestanding type or wall-mounted type can be selected from. Free design is also available.

*Kochi Prefecture registered product for disaster prevention (Former Kochi Bosan No.4)



DAISEN Co.,Ltd.

☎ +81-88-846-5050 🏢 +81-88-846-5051

📍 824 Nanatsubuchi, Kochi-shi, Kochi Prefecture 780-0003, Japan

🌐 <http://www.daisenkochi.com/>

✉ ad@daisenkochi.com

Press-in Methodology with the Silent Piler™



Solution for constructing a continuous wall in difficult site conditions

Giken manufactures a piling machine called Silent Piler™ and offers various construction technology, the Press-in Method, to worldwide. The Silent Piler™ characteristics, which include but not limited to, low noise, no vibration, and compactness, allows work in constrained areas, such as overwater, restricted headroom, and construction along existing buildings.

One of the representative Press-in Method, Non-Staging Method, provides benefit to the total construction work as it allows the installation of piles without a temporary stage, and hence reduces construction cost and period.

Non-Staging Method

A methodology using Giken's GRB system. Construction of structural walls without a temporary stage is possible.

Zero Clearance Method

A methodology using the Zero Piler. Construction of structural wall to adjacent structures, railway, road, and boundaries are possible. It allows for better utilization of available space.

Overhead Clearance Method

A methodology using Clear Piler. Construction of structural wall under headroom restriction site is possible without impacting the surrounding environment, i.e. Traffic.



☑ Delivery Records

Since the machine's introduction to the market in 1975, press-in method has been adopted in more than 40 countries worldwide.

Visit Giken's website for more details.

📖 Other Information

Implant Structure

Installation of piles by Press-in Method achieves high rigidity and retainability

Disaster Prevention

Utilizing Implant Structure, human lives, property, and culture can be protected from natural disasters.

GIKEN LTD. Tokyo Head Office

☎ +81-3-3528-1633 🏢 +81-3-3527-6055

📍 16F Ariake Central Tower, 3-7-18 Ariake, Koto-ku, Tokyo 135-0063, Japan

🌐 <https://www.giken.com/>

✉ international@giken.com

Evacuation Backpack “Kuroshio”



An evacuation backpack is made of Kochi's denim
It's comfort for everyday travel

The evacuation backpack is full of ingenuity, it's designed by Professor Sakiko Kanbara of University of Kochi who is a female disaster prevention specialist in Kochi. This evacuation backpack has a cushion in shoulder straps, a luminescent zipper, and a side pocket that can hold a 500ml plastic bottle or baby milk bottle. This evacuation backpack is very comfortable and suitable for MEN or WOMEN in all ages. There are 3 types of this backpack, including a two-way bag type is that can be used by both adults and children. You can choose this evacuation backpack from some set: the makaite (special) set with food, the bottchiri (standard) set without food, or any other set based on consultation. The another choice is you can buy just the backpack.



Bottchiri set



Makaite set

Delivery Records

Kuroshio Town, Kochi City hometown tax payment goods, sold at Home Center Futagami Group

Other Information

14 liters for adult backpack, 6 liters for children and small type Kuroshio Disaster Prevention Backpack Makaite Set 2.5kg Bottchiri Set 1.6kg



Interest-Production

+81-90-3786-8431 +81-88-856-8680

Nankoku Office: 1199-8 Osone Kou, Nankoku-shi, Kochi Prefecture 783-0004, Japan
Kochi Office: 4322 Niida, Kochi-shi, Kochi Prefecture 781-0112, Japan
<https://interest-prod.jimdo.com>
interest.tani@gmail.com

Genkidayo Safety Notification System



A simultaneous safety confirmation email can be sent immediately
in the event of a disaster.

This system is designed to send out emails to registered users simultaneously to confirm their safety in the event of a disaster such as an earthquake or tsunami. The system starts counting at the same time as the emails are sent out, making it extremely easy to quickly confirm the safety of users.

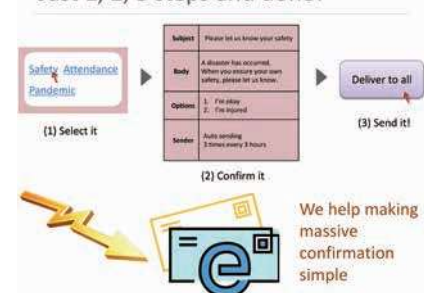
This immediate aggregation function can also be used as an everyday communication network or intranet system, leading to smooth operations in emergency situations. Canned text creation and detailed access control according to the structure of the group organization are possible. Because it is an internet-based service, it can be operated anytime, anywhere, even during power outages, as long as the user has a mobile internet environment such as a cell phone, smartphone, or laptop.

Delivery Records

Many municipalities and schools in Kochi prefecture.



Just 1, 2, 3 steps and done!



IT PRODUCT CO.,LTD.

+81-88-856-6840 +81-88-856-6841

2-12-7 Kaganoi, Kochi-shi, Kochi Prefecture 780-0032, Japan
<https://www.it-product.jp/>
info@it-product.jp

Foliage Plant with Emergency Kit



Decorative Emergency Kit, which can also serve as interior green for your daily life.

Since both Tasukaru Flower and Tasukaru Green can be used as house plants, you won't have to search for them during an emergency. They are equipped with a portable toilet (assembly type), so you don't have to worry about restrooms.



Tasukaru (helpful) Flower H70cm
TA-019



Tasukaru (helpful) Green H170cm
TG-022



Tasukaru (helpful) Green H170cm
TG-018

Delivery Records

Internet sales Wacoal mail order, etc. A thank-you gift from the Ochi town office

Other Information

Materials: polyester, plastics, FRP, iron, wood
Size: H.70 Φ 40 (Tasukaru Flower)
Size: H.170 Φ 60 (Tasukaru Tree)
2007 Local Industry Promotion Award

Iwaya Co., Ltd.

+81-889-26-3444 +81-889-26-3335

4137 Yokobatake-minami, Ochi-cho, Takaoka-gun, Kochi Prefecture 781-1312, Japan

<http://iwaya-hp.com/>

iwaya@iwaya-hp.com

Self-Propelled Amphibious Dredging Vehicle



To be used for maintaining river environments and conducting disaster restoration works.

The work vessel for collecting garbage, driftwood, etc. in narrow urban rivers, rivers, where large-sized heavy machines cannot enter and which are crowded with private houses or dam reservoirs. In addition, it can also cope with removal of the rubble when a disaster occurs. With a large buoyancy structure and attachment of spuds, it is possible to perform stable works on soft or marshy areas or on the surface of water.

- The unit can be transported with 3 large trucks.
- Assembling/disassembling is easy within 1 hour.
- Work on the water: When performing works, the vessel is fixed with spuds enabling stable works.
- Moving on the water: By rotation of the devices for propelling water wheels on both sides.
- Running on the ground: With crawlers under the float.
- Capacity of standard bucket (in a piled state) : 0.14m³ Turning speed (min-1[rpm]) : 8.8[8.8]
- 3-divided float assembling type: 5000m×1540m 2 boats, 5000m×1300m 1 boat
- Spud automatic type: 200mm×200mm square×6
- Total weight (t) : 13.4



Disaster Prevention Material Center opened

Delivery Records

One unit to Cambodia (expected one unit to Philippines in March 2021)

Other Information

Versatile models such as 0.7m³, 0.5m³, 0.25m² and 0.14m² are available.

Kochi Marutaka Co., Ltd.

+81-88-845-1510 +81-88-846-2641

12-31 Azouno-minamimachi, Kochi-shi, Kochi Prefecture 781-0014, Japan

<https://www.ko-marutaka.co.jp/>

marutaka@ceres.ocn.ne.jp

NS Net (Deteriorate Concrete Prevention Net)



Adapts to the shape of the structure to prevent flaking with a clean appearance

Concrete fall prevention net that can be fixed with anchors only. The use of high-strength vinylon offers excellent durability, flame resistance, and flexibility.

It can be fixed along the shape of the structure thanks to a bending process that is easy in the field.

The mesh sheet is a gray color similar to concrete, and the appearance after installation is almost even.

Delivery Records

More than 1,000,000m² throughout Japan



Nishinomiya Sangyo Co., Ltd.

+81-88-856-5070 +81-88-856-5090

1-1-11 ikkunakamachi, Kochi-shi, Kochi Prefecture 781-8134, Japan

<http://www.nm-sg.com/>

toda@nm-sg.com

Water level monitoring systems



OSASI prevent disasters from the flooding of the river and landslide caused by the heavy rain.

OSASI offers various water level monitoring systems customized for the local environmental conditions and customer needs:

Type1) Water level gauge built-in server: Equipped with an internal server, for monitoring in real time.

Type2) Wireless ad-hoc network water level gauge: Spontaneous device connections enable multi-point water level observation. It is useful for monitoring flooding and water levels of inland water such as rivers, reservoirs, plants.

Type3) Low cost water level gauge: Specialized for flood control and it's adopted for national standard specification in Japan.

Type4) OSNET-compatible water level gauge: In addition to water level measurement, rainfall, landslide and debris flow monitoring can be combined to form a total system.

Type5) Sigfox wireless water level gauge: Low power, low cost, long range connection by Sigfox LPWA wireless network.

Delivery Records

A total of over 12,000 units supplied to national government offices, local governments, construction companies, construction consultants, and telecommunications contractors nationwide

Other Information

Patented: Patent number 5431540 (Item1) . NETIS registration: SK-170010-A (Item2) OSNET-compatible (Items 2 and 4) Kochi Prefecture Certified Disaster Prevention Related Product (Items1 and 2) Kochi Prefecture Certified Pioneer Product (Item1)



OSASI Technos Inc.

+81-88-850-0535 +81-88-850-0530

65-3 Hongu-cho, Kochi-shi, Kochi Prefecture 780-0945, Japan

<https://www.osasi.co.jp/en/>

info@osasi.co.jp

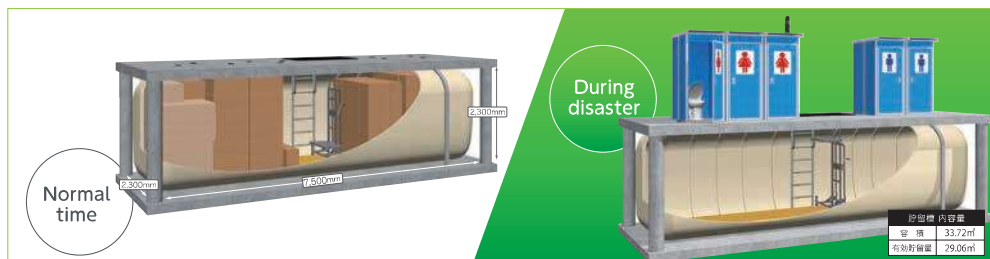
Disaster Relief Toilet 2-ways Daichi-kun



Immediate solution to the problem of no toilets!

Feel secure in emergencies with this underground solution! Up to 10 simple flush toilets and disaster supplies can be stocked in an underground tank in preparation for disasters. In the event of a disaster, evacuees can set up their own toilets and use them immediately. It has by far the highest throughput for a disaster toilet product.

Tank body: FRP material, length of 7.5m, depth of 2.3m, height of 2.3m (storage capacity: equivalent to about 100 temporary toilets) *Burial work is required



Large tank capacity suitable for 500 pers by 30 days. Usable for temporary sewage tank.

Delivery Records

Kochi City (1unit), Aki City (12units), Shimanto Town (4units), Japanese Red Cross Society Kochi Blood Center (1unit), Japanese Red Cross Society Nagoya Second Red Cross Hospital Disaster Management Center (1unit), NEXCO West Japan Nankoku Office (1unit)

Other Information

In case of a disaster, we have devised a variety of ways so that even people who see Daichikun for the first time can immediately understand how to use it. This is a commitment to universality to ensure use is possible 30 years into the future.

*The product can be customized according to the needs of customers.

*It is recommended for schools, hospitals, evacuation centers, disaster relief centers, etc.

Shikoku Jokan Co.,Ltd.

+81-88-883-1011 +81-88-884-1324

19-31 Minamigoza Kochi-shi, Kochi Prefecture 781-0084, Japan

<http://saigaitaisaku.net/>

info@saigaitaisaku.net

LED solar security light with seismic sensed auto-unlock key box and evacuation shelter sign board



Security light with a box that unlocks when shaken by an earthquake

Normally, the LED lights are automatically turned on after sunset using solar power stored during the day, and then turned off at a set time. The security box will open when an earthquake is detected, and at the same time, the security light and shelter indicator will light up. Including the keys to evacuation centers and stockpiles in the security box can make evacuation easier.

Delivery Records

None (although we have participated in disaster prevention exhibitions)

Other Information

Evacuation shelter sign/LED 96 units acrylic sheet 400 × 550 × 55
Lighting: 1,000Lm or above white light, ultra-high intensity white LEDs 48 units

Wind speed 60m/sec, solar part/sealed lead-acid battery 12V17AH × 2, expected life 10 years 10-hour timer

Lighting height / 3.8m

Material/power box: steel plate, pole Φ 120mm steel pipe, security light Body: aluminum die-casting, lighting: acrylic

Operating temperature: -10°C to 50°C, storage temperature: -30°C to 70°C, no sunshine guarantee: 80W 8 days



SHIMA INDUSTRIES CO., LTD.

+81-88-847-1177 +81-88-847-1187

4338 Niida Shinzaki, Kochi-shi, Kochi Prefecture 781-0112, Japan

<https://shima-kochi.com/>

shima-kochi@ec6.technowave.ne.jp

Large prefabricated retaining wall "Guardian"



Equal thickness type, unequal thickness type, back penetration type for i-construction support

Equal thickness type that allows the user to freely select the slope gradient and length of the retaining wall. These blocks for isostatic retaining walls are much lighter in weight than conventional large blocks.

The unequal thickness type blocks can be used for in-situ concrete retaining wall constructions of complex shapes. Various shapes can be manufactured by changing the length of the upper and lower metal fittings that connect the front and back. These large blocks can be used to construct unequal thickness retaining walls, leaning retaining walls, gravity retaining walls, etc. in a short period of time by simply piling up the blocks and pouring the filling concrete at the construction site.

The back penetration type has an opening in the back panel, which allows the concrete to penetrate the back panel and slide completely into the wall body on the back side of the retaining wall. These large blocks that can be applied to tension concrete construction methods and erosion control weir work.



Delivery Records

[Within Kochi Prefecture]

construction projects ordered by the Ministry of Land, Infrastructure, Transport and Tourism, civil engineering offices in Kochi Prefecture, municipalities, etc., approximately 26,100m²

[Outside of Kochi Prefecture]

Ehime, Oita, Fukuoka, Yamaguchi, Hiroshima, Gunma and other prefectures, approximately 4,400m²

Other Information

Dimensions/Large type: starting from 1,665mm x 1,000mm

Small type: starting from 1,250mm x 1,000mm

Weight · price/depends on shape, Panel pattern / pseudo-stone, stone-clad, pearskin, etc. Awarded the Kochi Prefecture Local Industry Award in FY2016, established the Guardian Block Industry Association in March 2018 (25 member companies and 36 factories joined as of June 2020), certified as a disaster prevention-related product by Kochi Prefecture; acquired a patent in July (overseas patent in progress, acquired in Taiwan), and certified as a product subject to the Kochi Prefecture Model Order System in 2019.

Shimanto Concrete Co., Ltd.

+81-880-22-8577 +81-880-22-8570

812-2 Tokonabe, Shimanto-cho, Takaoka-gun, Kochi Prefecture 786-0031, Japan

http : //www.shimanto-c.co.jp/

shimanto-con@shimanto.tv

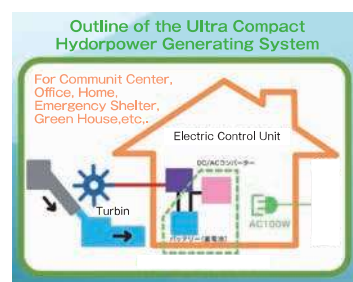
Cstream-1 High-performance, Ultra-compact Turgo Turbine Generator



Cstream-1 generates power by rotating the turbine by hydropower.

Inner rotor generator with high power efficiency, it features an electric control unit that uses an inner rotor coreless generator with high power generation efficiency and charges the storage battery with the maximum power generated power. It efficiently converts the rotational energy of the Turgo turbine into electricity.

When using general electrical products, convert them to AC 100V outside the DC / AC input of the storage battery.



Other Information

WHAT YOU CAN DO

200W Electricity is sufficient for Refrigerator (30W) / LED light (30W) / TV (30W) / Laptop PC (20W) / Printer (18W) / 5 mobile phones recharge (5W)



SKY ELECTRONICS CO.,LTD.

+81-880-22-3993 +81-880-22-2332

1380-56 Higashionaro Shimanto-cho, Takaoka-gun, Kochi Prefecture 786-0027, Japan

http://sky-denshi.co.jp

info@sky-denshi.co.jp

Blue Sea Silt Fence



For disaster recovery work in ports, rivers, etc.!

This curtain under the float prevents the spreading of polluted water generated during construction. This anti-pollution fence was developed from the point of view of users, pursuing both workability and economy in order to prevent the spread of pollution. The product can be used for disaster recovery work and environmental protection work at waterfront areas such as ports and rivers. Rental products are also available.



Delivery Records

The product is widely used by general contractors, local governments, etc.

Takashina Life Preservers Co., Ltd.:

+81-887-28-1173 +81-887-28-1881

2438 None Hei, Toyo-cho, Aki-gun, Kochi Prefecture 781-7301, Japan

<https://tlpc.co.jp>

koji_iseki@tlpc.co.jp

Hyakusanchin Tofu beancurd Jerky(Emergency food)



Source of protein that is lightweight, compact, and produces less waste!

One bag contains approximately 11.8g protein which might be in short supply during a disaster. In addition, one 40g bag contains 127 kcal.

The product is endowed with good firmness and chewiness that provide a sense of satisfaction when you eat it. The only allergen among the 27 ingredients is soy. It contains no animal ingredients and is suitable for vegetarians. The vacuum packaging makes it compact and lightweight. It can be easily stored in a limited storage space.

Other Information

Our products for commercial use have won the Nikkei MJ Award for Excellence in the 2018 Nikkei Superior Products and Services Awards and the grand prize in the food category in the new product contest at the 24th Gourmet & Dining Style Show Fall 2018.



Tanaka Shoku Co., Ltd.

+81-88-845-2451 +81-88-845-6507

1761 Nunoshida, Kochi-shi, Kochi Prefecture 781-5101, Japan

<https://www.tanakashoku.jp/item/>

ts@tanakashoku.jp

PALA Lead Pipe Solar Guide Light



Our unique electrical circuitry will guide people to the evacuation site safely and securely

PALA is a lead pipe induction lamp applied to the PALA solar street light system. It is attached to handrails and guard pipes installed in evacuation centers to light evacuation routes and guide people to evacuation sites. One set of the lead pipe induction lamp PALA can provide light for over 100 meters.

The light illuminates the feet evenly so that people can evacuate safely and securely in the event of a nighttime earthquake or tsunami disaster.

It is resistant to earthquake disasters and will always light up when an earthquake is detected, even if it has been raining for more than 20 days and cannot be recharged.

The product extends the life of storage batteries. There is no need to replace storage batteries or perform other maintenance for more than 10 years.

✓ Delivery Records

Over 60 locations in Kochi Prefecture, Hayama Town, Kanagawa Prefecture, Hidaka Town, Wakayama Prefecture, etc.

📖 Other Information

Please consult with us for special specifications and specification changes, such as AC100V specifications (with backup power supply), specifications with entrance lights, specifications with square lights, and heliport round light specifications.



Tosatsushin Co., Ltd.

☎ +81-88-856-3199 🏢 +81-88-856-3198

📍 3157 Usa, Usacho, Tosa-shi, Kochi Prefecture 781-1161, Japan

🌐 <http://www.boating.co.jp>

✉ hama@boating.co.jp

Special Elastic Rubber TS Seal



Special seismic elastic rubber that prevents water from seeping through joints

Special elastic rubber with excellent elasticity, durability, and weather resistance.

The TS seal maintains strong adhesion and semi-permanent elasticity, and does not harden over the long term. In addition, the product has excellent earthquake resistance and permanent water sealing, and entails a special construction method that can be used for water and sewage pipes, underground common utility duct joints, and underground methane gas explosion-proof joints, and it is also used for lifelines such as oil and gas.

✓ Delivery Records

Used by many local governments across Japan for water supply and sewerage propulsion works, underground methane gas explosion-proof construction methods, underground common utility duct construction, and seawall repair works

📖 Other Information

- TS seal automatic mixing machine type
4.4kg set (4kg main agent + 0.4kg hardener)
13.2kg set (12kg main agent + 1.2kg hardener)
- TS seal tape
T10mm × W15mm × L3.8m / T13mm × W15mm × L3.8m
T15mm × W20mm × L4.0m
Shaped and dimensioned to suit the application, joint shape, and stopping power as required.
Price: Please consult with us (depending on construction conditions).
Product certified by Kochi Prefecture Disaster Prevention Industry Exchange Association (24 Kochi Bosan No. 27)



Application of TS seal tape for joining drop-off manholes



Filling in the joints of a seawall Filling the end face of the sewer pipe with TS seal

TS-Seal Co., Ltd.

☎ +81-88-884-4567 🏢 +81-88-884-8211

📍 3F Nishimoto Building, 6-5 Saenbacho, Kochi-shi, Kochi Prefecture 780-0823, Japan

🌐 <http://www.ts-seal.com/>

✉ info@ts-seal.com

Easy Stretcher



A stretcher for disaster prevention that can be easily carried by women and the elderly!



Polypropylene material that can be easily washed in water. While it can be transported by up to 10 people, it can also be transported by one person because it can be towed like a sled. The shape can be changed according to the transport circumstances. It comes with a special case for easy identification and four belts for drop prevention and traction. When stored, it can stand on its own, so it does not take up much storage space.

✓ Delivery Records

Companies, schools, voluntary disaster prevention organizations, local governments, welfare facilities, museums, construction sites, and events in and outside of Kochi Prefecture

Yoshimura Denso Co., Ltd.

☎ +81-88-850-0001 📠 +81-88-850-0003

📍 2129-9 Asakura Hei, Kochi-shi, Kochi Prefecture 780-8063, Japan

🌐 <http://www.y-denso.com/>

✉ calec@ca.pikara.ne.jp

“MEDIPAD STRAIGHT” disposable diaper pad type



Low acid high-absorbency incontinence pads

These high-absorbency pads are fitted with tape and straight-cut to keep them securely inside your underwear. They can be spread open with one hand, making them easy for anyone to use, and are extra-absorbent, offering security to those who require overnight or long-term protection or experience heavy bladder leaks. The outer layer is made of breathable material, ensuring the interior is always comfortable and dry. Like your skin, the absorbent material is mildly acidic, reducing the burden on your skin. As the product will be in contact with your skin for long periods, it seemed appropriate for us to make it easy on your skin.

✓ Delivery Records

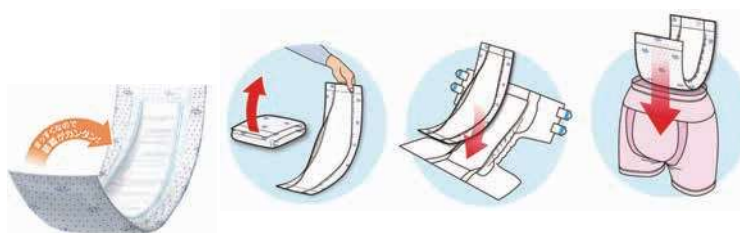
Sold to institutions and hospitals nationwide

📖 Other Information

Dimensions: 18cm×67.5cm

Number per package: 25

Approximate capacity: 1,250ml



Chikazawa Paper Company, Limited

☎ +81-88-892-0126 📠 +81-88-893-1963

📍 4003 Ino-cho, Agawa-gun, Kochi Prefecture 781-2110, Japan

🌐 <http://www.chikazawa.co.jp/>

✉ business@chikazawa.co.jp

Face Mask Inner Sheet



Mask-in-Sheet is an inner sheet that does not slip off easily

This is a replacement inner sheet for masks.

Because it is less likely to slip inside the mask, it is ideal as an inner layer for cloth masks.

In addition, it is made of ester non-woven fabric, which has good elasticity and fits well.

It can also be used as a simple mask to prevent droplets or as an inner layer of a mask for hay fever. It can be washed and reused.

Delivery Records

Trading companies, individuals, etc.

Other Information

Size: 80mm×130mm, pack of 30 sheets



FUJI PAPER CHEMICAL CO., LTD.:

+81-88-852-0332 +81-88-852-0982

1225-1 Takaokacho Otsu, Tosa-shi, Kochi Prefecture 781-1102, Japan

<https://fujipaper.com/>

info@fujipaper.com

Lira Single toilet rolls (60 per case), Lira Double toilet rolls (60 per case)



These special watermarked toilet paper rolls are a secret known only to a few

A source of company pride, Lira toilet rolls feature an extremely rare type of watermark created using local traditional Japanese papermaking techniques lovingly handed down from generation to generation for a refined, restrained touch unlike that produced by prints. Our toilet paper is made exclusively from carefully-selected natural pulp, which is combined with water from the clear-running Niyodo River and then slowly and painstakingly screened. The resulting paper is soft yet tear-resistant and notable for its suppleness. A total of five different watermarks are available; you won't know which one you'll get until you open the package (we're sorry, but customers cannot specify a watermark when ordering).

Delivery Records

Available to individuals and hotels by mail order.



HAYASHI COMPANY, LIMITED:

+81-88-852-0535 +81-88-852-5845

Please send an email for inquiries.

3192-4 Takaokacho Otsu, Tosa-shi, Kochi Prefecture 781-1102, Japan

<https://www.tissue.co.jp/>

hayashi@tissue.co.jp

TOSAWASHI (TENGUJO PAPER) Japanese paper



World thinnest handmade Japanese washi paper

Japanese paper is used in museums around the world for the conservation and restoration of cultural properties. Among the different types of Japanese paper, our products have earned the patronage and trust of customers around the world thanks to the following features:

- Stable quality
- Track record
- Not only quality, but also attentive service.



Delivery Records

British Museum, Louvre, and other art museums, museums, and libraries in Japan and overseas

HIDAKA WASHI CO., LTD.

+81-889-24-7857 +81-889-24-7858

3486-1 Okina, Hidaka-mura, Takaoka-gun, Kochi Prefecture 781-2152, Japan

<https://www.hidakawashi.com/>

info@hidakawashi.com

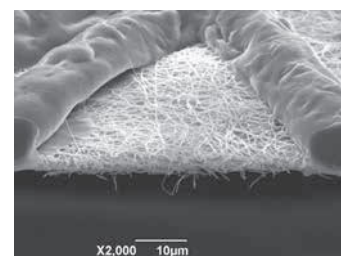
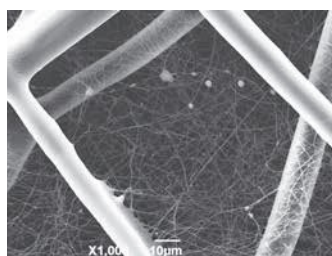
Nanofiber Nonwoven Fabrics



Nanofiber composite nonwoven fabric that surpass conventional concept.

Our original manufacturing technology has developed stable and state of the art mass production process in nanofiber spinning. The product achieves a pore diameter of $10\mu\text{m}$ or less, which is difficult to be achieved with conventional technologies.

It has a proven track record as a mask filter with a low pressure drop (making it easy to breathe in) without reducing the collection efficiency of fine particles. We are also engaged in the development of air filters and battery separators.



Delivery Records

Itochu Pulp & Paper Corporation

Other Information

Awarded the Kochi Prefecture Local Industry Award in 2018

Hirose Paper Mfg. Co.,Ltd.

+81-88-852-7771 +81-88-852-7773

3292-1 Takaokacho Otsu, Tosa-shi, Kochi Prefecture 781-1102, Japan

<https://www.hirose-paper-mfg.co.jp/>

sales@hirose-paper-mfg.co.jp

INDUSTRIAL
MACHINERY

AGRICULTURAL
MACHINERY

CIVIL
ENGINEERING
MACHINERY

ENVIRONMENTAL
AND BIOMASS
MACHINERY

OTHER
MACHINERY

DISASTER
PREVENTION
PRODUCT

PAPERMAKING

WOOD
PRODUCTS

OTHER
PRODUCT

Avonlea Keith moisturizing paper



The world's first moisturizing paper developed for delicate skin

The goal of our company is to produce beautifully balanced paper made of entangled fibers, like Tosa traditional Japanese paper.

In 1993, we succeeded in developing the world's first moisturizing paper based on this paper, which has more than twice the water content of ordinary tissue paper. The product has gained a lot of support from customers since then.



Delivery Records

Supermarkets and drugstores in Japan

Other Information

Single product size (box 200 pairs x 3 packs) 248 x 279 x 119mm 1010g

Kawano paper Co., Ltd.

+81-88-822-3107 +81-88-822-3110

71 Shimojimacho, Kochi-shi, Kochi Prefecture 780-0934, Japan

<https://www.kawano-p.co.jp/>

kawanok@kawano-p.co.jp

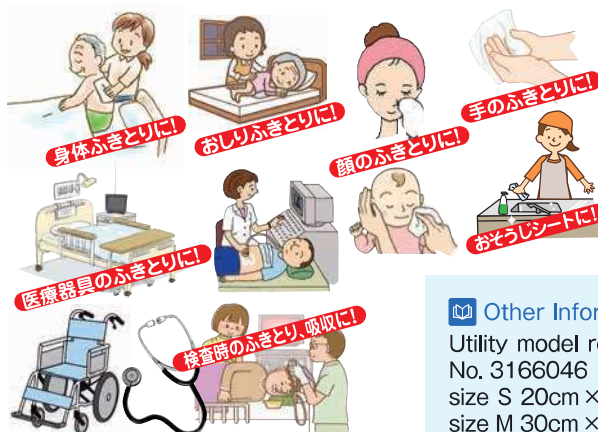
Disposable Dry Wipes (MINIPACK TOWEL)



These disposable towels reduce the risk of cross-infection!



- Outstanding water absorption and retention! Moderate thickness and soft to the touch!
- Dry, enabling long-term storage for use in disaster or other emergency!



Other Information

Utility model registration
No. 3166046
size S 20cm x 18cm
size M 30cm x 18cm
size L 40cm x 18cm

MINIPACK CO., LTD.

+81-88-866-6789 +81-88-866-7888

57-3 Jorinji, Okocho, Nankoku-shi, Kochi Prefecture 783-0041, Japan

<http://www.minipack.co.jp/>

minipack@minipack.co.jp

Laminated Japanese Washi Mask Case



This is a hard mask case made of Japanese paper laminated with plastic material and antibacterial coating on the inside. It comes with a convenient pocket to hold a spare mask. We can also provide novelty items with foil-stamped names from quantities of 100.

Masks have become a necessity in the new way of life, and people have become more careful about where they put their masks when they remove them for meals. This antibacterial Japanese paper mask case looks beautiful and can be kept in a bag at all times for temporary storage of a removed mask.

Delivery Records

Retailers (Ozu Washi, Nihonbashi) :1,500 units
Ryokan and hotels (Takefue) 2,540 units
Kochi Prefecture Tourism Convention Association 650 units, etc.

Other Information

Specifications: width 200mm, height 250mm
(2 folded, 2 pockets)



MORISA CO., LTD.

+81-88-852-1177 +81-88-852-6622

218-1 Takaokacho Otsu, Tosa-shi, Kochi Prefecture 781-1102, Japan
<http://www.morisa.jp/>
info@morisa.jp

Create Original Goods



Paperwork shop where original goods can be created with just a sheet of paper.

We design, print, and process at our own factory. We will make proposals according to your needs with printing technology cultivated since our establishment over 80 years ago and product planning ability developed in our store "Paper message".



Motoyama Printing.co.ltd. Paper message Department.

+81-88-872-0661 +81-88-823-4457

2-6-11 Okawasuji, Kochi-shi, Kochi Prefecture 780-0052, Japan
<https://www.papermessage.jp/>
info@papermessage.jp

Four-sided untrimmed adhesive label



Four-sided untrimmed adhesive label. These Japanese paper labels retain the natural handmade style because they are untrimmed.

This is a product made by improving machine-made Japanese paper with four untrimmed sides. It is in sheet form and is used for sake-labels and other types of labels. As there is no rubbing and no peeling, and less blotting during printing, it is an easy-to-use adhesive label paper.



Other Information

We can consult with you on the size, number of sheets, etc.
Example: 9 postcard size sheets (3 stickers × 3 stickers) / 1 sheet

NAIGAITENGUCHOUSHI CO., LTD.:

+81-88-892-1088 +81-88-892-2968

1246-1Kada, Ino-cho, Agawa-gun, Kochi Prefecture 781-2133, Japan

<http://www.naiten.com/>

naigaitengu@kzd.biglobe.ne.jp

Skin Care Sheet with Paper Mulberry (for face, for decollete and for skin around eyes)



Providing you blissful moments with a Japanese-paper mask and a favorite skin lotion.

It is a dry-type skin care sheet to be used with a moistened skin lotion.

The sheet developed and designed from the technology for TOSA WASHI is a WASHI mask made 100% from natural fabrics compounded with "paper mulberry", which is a representative material for Japanese paper. It is gentle on delicate skin and becomes softer to the touch when it is wet with the skin lotion, thus adhering to the skin as if it is assimilated therein. Further, because it is superior in retentivity of the skin lotion, the skin may be cared for more effectively. It is a product expected to be used by persons who have sensitive skin or persons who are particular about the right skin lotion fit for their skin. Three types are available for face, decollete, and skin around eyes, depending on the scene.



Other Information

TOSAKOZO - the material of TOSA WASHI:

Tosakozo (paper mulberry) has a history of 1000 years. Tosa Washi is famous for its wide variety and good quality. It was once prized as a gift to the imperial court and the shogunate. The paper made from Tosakozo is strong, soft, and highly absorbent, so it has long been loved as a brush-up paper by maiko (apprentice geisha) and geisha, and as decorative paper by people involved in traditional performing arts in Kyoto, and is still used today.

Sansai Co., Ltd.

+81-88-852-3866 +81-88-852-3877

4517-2 Kitaji, Tosa-shi, Kochi Prefecture 781-1111, Japan

<https://www.sansai-co.jp/>

info@sansai-co.jp

“MY WET” sanitizing sheets



350 large sanitizing sheets manufactured in Kochi.

- For sanitizing tables and chairs
- For sanitizing doorknobs, switches, and handrails
- For sanitation control in stores and public facilities



☑ Delivery Records

Facilities including restaurants and sports gyms in Kochi Prefecture

Sansho Shigyo Co., Ltd.

☎ +81-88-854-0521 🏢 +81-88-852-2170

📍 2424-7, Kitaji, Tosa-shi, Kochi Prefecture 781-1111, Japan

🌐 <https://www.sanshoshigyo.jp/>

✉ honsha@sanshoshigyo.jp

SUN MORE NA (ULTRA-FINE ACRYLIC NON-WOVEN FABRIC:FOR WIPING)



Ideal for wiping off scratch-prone surfaces with a three-layer structure that catches dirt!

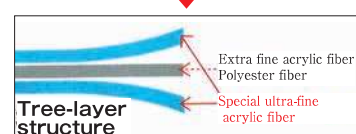
Wipes clean foundation, hair wax, sweat, and other dirt from your mobile phone. It is thin and soft, so it catches dirt and dust in crevices. In addition, no chemicals are used, so it is safe to use on your skin. They can be disposed of as burnable garbage. (They cannot be flushed with water.)



Cross section of ordinary rayon nonwoven fabric



Cross section of NA superfine acrylic fiber nonwoven fabric



☑ Delivery Records

Various types of glass wipes, eyeglass wipes, and wipes for computer screens, cell phone screens, smartphone screens

📖 Other Information

Dirt can be easily removed because of the three-layer structure and special ultra-fine fibers. Both surface layers are made of split acrylic fiber, which has a polygonal cross-section to further improve dirt removal performance. It leaves almost no wipe marks because it absorbs surface dirt into the middle layer.

Sanwaseishi Co.,Ltd.

☎ +81-88-852-3811 🏢 +81-88-852-3823

📍 443-1 Takaokacho Hei, Tosa-shi, Kochi Prefecture 781-1103, Japan

🌐 <http://www.sanwaseishi.co.jp/>

✉ sanwa-p@orion.ocn.ne.jp

INDUSTRIAL
MACHINERY

AGRICULTURAL
MACHINERY

CIVIL
ENGINEERING
MACHINERY

ENVIRONMENTAL
AND BIOMASS
MACHINERY

OTHER
MACHINERY

DISASTER
PREVENTION
PRODUCT

PAPERMAKING

WOOD
PRODUCTS

OTHER
PRODUCT

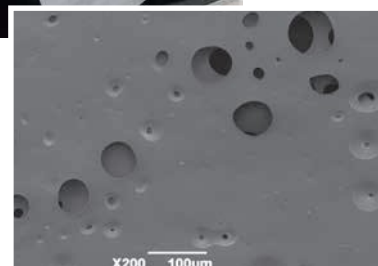
Adsorption sheet "Type FK"



It can be easily attached and peeled off on smooth surfaces, and also can be used repeatedly.

FK is adsorption sheet which contains no adhesive agent, and used for non-slip mat. Besides non-slip mat, it also can be used as a substitute for adhesive agent, adhesive tape, Velcro, magnet, etc.

While type FK is a sheet with acrylic foam coating on the surface of wet-laid nonwoven fabrics which were produced from our factory, this acrylic foam can be coated on the surface of PET films and fabrics with low breathability, so that customers' original FK tape can be made in accordance with individual requirements.



Delivery Records

Teijin Frontier Co., Ltd.,
Pacific Giken Co., Ltd.

Techno Hirose Co., Ltd.

+81-889-24-5200 +81-889-24-7019

277-2 Shimobun, Hidaka-mura, Takaoka-gun, Kochi Prefecture 781-2151, Japan

<https://www.hirose-paper-mfg.co.jp/>

sales@hirose-paper-mfg.co.jp

Maximum size, maximum absorbency urine pad 1800



Maximum size, maximum absorbency urine pad

You can rest assured until morning with the largest size and maximum absorbency that no other company offers. It has a gourd-shaped design that fits the crotch. The product prevents slippage and leaks. Furthermore, the maximum size (38 x 71cm) that completely wraps around the hips offers reassurance.

A fluffy sheet is used on the part of the product that comes in contact with the skin to gently protect the skin. In addition, the back sheet is made of a soft cloth-like breathable sheet. It allows moisture to escape and prevents dampness.

We support a comfortable life by designing products with the user in mind.

Delivery Records

Nursing care facilities, hospitals,
drugstores, etc. throughout Japan

Other Information

Size: 38cm x 71cm, number of sheets: 30,
approximate absorption volume: 1800ml



TOYOTOKUSHI CO., LTD.

+81-88-892-0058 +81-88-893-4808

112-1 Saiwaicho, Ino-cho, Agawa-gun, Kochi Prefecture 781-2103, Japan

<http://www.toyotokushi.jp>

contact@toyotokushi.jp

PAPER WASTE



Absorption speed is high and no waste thread comes out.
Paper waste replaces cloth.

This is a sheet manufactured by compression embossment. Quick in absorption, it can wipe off wastes powerfully and firmly even when wet with water.

4-ply

- Paper Waste Clean 50 sheets: Sheet size: 380mmx330mm
- Paper Waste 50 sheets in box: Sheet size: 380mmx330mm
An In-Box Type that doesn't blow away in wind even in outdoor use.
- Paper Waste Roll 330m(1100 cuts) Sheet size: 340mmx330mm A Roll Type that can be cut to the required length with perforations.



3-ply

- Paper Waste Solid color band 50 sheets: Sheet size: 340mmx330mm

Wako Paper Co., Ltd.

+81-88-892-1144 +81-88-893-3636

3936 Ino-cho, Agawa-gun, Kochi Prefecture 781-2110, Japan
<http://wako-seishi.jp/>
info@wako-seishi.jp

Genuine Domestically-made Bamboo Laminated Wood



Uses 100% bamboo from Kochi Prefecture to contribute to woodland maintenance

This product is made of laminated wood from Moso bamboo produced in Kochi Prefecture. Everything from the felling of the bamboo to the manufacturing of the laminated wood is done in Kochi Prefecture, making it a genuine, purely Japanese product. No chemicals are used in the processing of bamboo materials. The adhesive used in the gluing process is compliant with JIS standard F☆☆☆☆, and is friendly to the human body and the environment. The use of bamboo glued laminated wood in a wide range of fields will promote the harvesting of bamboo and help maintain woodlands.



Example of product processing

Other Information

Product examples

Standard product: length 1000 (2000) × width 320 × thickness 20mm
Customer order products: length 100 to 2000mm × width 10 to 850mm × thickness 5 to 20mm

Remarks:

- Manufacturing may not be possible depending on the combination of length, width, and thickness
- Made-to-order production

COSUMO KOBO CO., LTD.

+81-88-847-1823 +81-88-847-1823

4650 Niida, Kochi-shi, Kochi Prefecture 781-0112, Japan
<https://www.cosumo-kobo.jp/>
k.cosumo@rice.ocn.ne.jp

monacca



A new form of wood born from the forest that connects trees, people and the city

monacca is all handmade.

Skilled craftsmen are involved in the entire process, ranging from the selection of logs, slicing the wood, three-dimensional molding, surface polished finishing, painting, and sewing of the wood to the final check.

The product is made in Japan with care and attention to each detail, from the materials to the finishing touches.

Because wood is a product of nature, the grain and properties of each piece of wood are different. The experience and skills of highly skilled Japanese craftsmen are essential in each step of the process in order to finish the product.

Born from the forest, monacca is the world's only wooden bag with a molded design that suits the lifestyle of the owner.

✓ Delivery Records

Corporate campaign goods, gift goods, individual consumer purchases

📖 Other Information

Good Design Award



ECOASU UMAJIMURA CO., LTD.

+81-887-44-2535 +81-887-42-1911

1464-3 Umaji, Umaji-mura, Aki-gun, Kochi Prefecture 781-6201, Japan

<https://www.ecoasu.co.jp/>

umajimura@ecoasu.co.jp

HINOKI WOODEN CHIPS



Natural air freshener made only from Tosa cypress, which is excellent for sterilization and deodorization.

This natural fragrance made of 7mm square granules of Tosa cypress from Kochi Prefecture features a refreshing and cool fragrance.

In general, cypress is said to have insect repellent and air cleaning effects against house dust. It can be placed in various places, such as entrances, cars, bathrooms, and closets, to enjoy the natural fragrance.

✓ Delivery Records

General merchandise retail stores, lodging facilities, public facilities

📖 Other Information

Raw materials: Tosa cypress, volume: 210g



GROWING

+81-88-881-5049

2-1 Maruikicho, Kochi-shi, Kochi Prefecture 781-0802, Japan

<https://9rowing.jp/>

info@9rowing.jp

“Nandemo Noruzo” (Heavy staff loadable)



Withstand load of 150kg: Heavy staff loadable

A stepladder made of Kochi Hinoki cypress having gained popularity for pleasant touch, which may be used also for displays. Among others, the elephant on the label is very unique!



📄 Delivery Records

DIY stores

📖 Other Information

520mm×270mm×230mm

Ikegawa Mokuzai Kogyo Co., Ltd.

☎ +81-889-34-2015 🏢 +81-889-34-2545

📍 775-1 Doi Kou, Niyodogawa-cho, Agawa-gun, Kochi Prefecture 781-1606, Japan

🌐 <https://www.ikemoku.co.jp/>

✉ emono-maido@ikemoku.co.jp

Hinoki Chips/Hinoki no Kaori



Put hinoki cypress chips grown in the Shimanto River headwaters in your closet to repel insects, or put them in your pillow for a good night's sleep.

Enjoy the fresh fragrance extracted from hinoki cypress grown in the Shimanto River headwaters.

【Hinoki Chips】

We sell 2 or 3 mm-thin chips of dried hinoki cypress, broken with a chipper and passed through nets.



📄 Delivery Records

Kyoto Nishikawa Futon Store, Hinoki-ya and many others.

【Hinoki no Kaori】

Fresh leaves are collected from thinned hinoki cypress, finely crushed, and boiled using steam distillation with normal pressure. The separated oil is sold in undiluted form.



📄 Delivery Records

Birikensan and many others

📖 Other Information

Among the inquiries from overseas, Korean traders are the majority. Some traders directly purchase at our company and bring them back to Korea.

Kochi Seiko Co., Ltd.

☎ +81-889-57-2079 🏢 +81-889-57-2654

📍 982 Omata, Onomi, Nakatosha-cho, Takaoka-gun, Kochi Prefecture 789-1418, Japan

🌐 <http://www.kochi-seiko.co.jp/>

✉ kouchi-seikou@ca.pikara.ne.jp

INDUSTRIAL
MACHINERY

AGRICULTURAL
MACHINERY

CIVIL
ENGINEERING
MACHINERY

ENVIRONMENTAL
AND BIOMASS
MACHINERY

OTHER
MACHINERY

DISASTER
PREVENTION
PRODUCT

PAPERMAKING

WOOD
PRODUCTS

OTHER
PRODUCT

High Class Novelty Made of Natural Wood



Natural wooden novelty products created with the technology of a hunting gun manufacturer

Most rifle and shotgun gunstocks are made of wood, and they need to be safe, practical, artistic, and robust. Our products and parts are made using a carving method, which was developed from the gunstock processing technology of the Miroku Group and is also used in the wooden steering wheels of luxury cars.

● Advantages of the carving method

1. It is possible to show that you are using real solid wood.
 2. The natural wood grain is seamless and beautiful.
 3. No need for molds, can be produced in small quantities
- We accept custom-made orders for material types, shapes, paint finishes, logos, etc.

Examples of products: Business card cases, shoe horns, paper knives, key holders, coasters, name tags, etc.

Main types of wood: Bamboo (from Kochi Prefecture), bird's eye maple, walnut.



✓ Delivery Records

Automobile dealers, etc.

📖 Other Information

2003 National Local Industry Awards, Encouragement Award

2008 Shikoku Industrial Technology Awards, Technology Achievement Award, Excellence Award

2012 Shikoku Industrial Technology Awards, Technology Achievement Award, Excellence Award

2012 Kochi Prefecture Local Industry Awards, Local Industry Award

2013 The 5th Prime Minister's Prize, Monozukuri Nippon Grand Awards, Excellence Award in Application of Traditional Technology Category

2014 Selected as a 16th JIDA Target Product

2017 Selected as a Regional Future Leading Company

Miroku Technowood Co., Ltd.

☎ +81-88-880-6713 🏠 +81-88-880-6711

📍 537-1 Shinohara, Nankoku-shi, Kochi Prefecture 783-0006, Japan

🌐 <https://www.mirokutw.com/>

✉ info@mirokutw.co.jp

Wood wool (excelsior)



Wood wool sustainable cushioning material made of biodegradable natural cushioning material

This is a natural cushioning material made of pine and cypress from Kochi Prefecture.

It is a 100% biodegradable natural material. It is an environmentally sustainable product with low energy costs for manufacturing and a recycling-oriented manufacturing process that does not produce waste materials.

Because it is also a carbon offset credit product, it helps to reduce carbon dioxide emissions. Applications include cushioning materials, plant mulch, vegetation sheets, and cool mats.



✓ Delivery Records

Japan Agricultural Co-operatives in Kochi Prefecture, Zen-Noh Tokushima, Yamani Package, Nisshoku Corporation

📖 Other Information

Raw materials: Pine, cypress, cedar, camphor from Kochi Prefecture

Toda Shoko Incorporated

☎ +81-88-855-0426 🏠 +81-88-855-1278

📍 580 Honmura, Tosa-shi, Kochi Prefecture 781-1122, Japan

🌐 <http://toda-shoko.com>

✉ info@toda-shoko.co.jp

KUMIKO LOAD BEARING WALL



Japanese modern design bearing wall

This Japanese modern structural wall has excellent design based on Japanese Kumiko patterns. We have been able to use the Kumiko technique in a revolutionary way to make a new, stronger bearing wall for buildings. These walls have enhanced ability to resist horizontal impact from earthquakes and strong winds. This bearing wall using the Kumiko technique is a new innovation in Japanese architectural technology. By repeating this design pattern in bearing walls, a building like a birdcage can be made. Put simply, it has become possible to design architecturally superior buildings without using shielding walls.



Delivery Records

Public facility: House of Mr. Hayashi
Private houses

TOSA KUMIKO Co., Ltd.

+81-88-850-3080 +81-88-850-3082

80-1 Nishibun, Harunochō, Kochi-shi, Kochi Prefecture 781-0304, Japan

<https://tosakumiko.jp>

info@tosakumiko.jp

Cutting board "SUGURE"



This is an eco-friendly cutting board made from forest thinning in Shimanto.

This cutting board made of Shimanto cypress is rich in fat and oil. Shimanto cypress is said to have antibacterial and antifungal properties, making it hygienic to use. The center part of the cutting board is made of a cut of wood which has strong elasticity, so it is gentle to knives and does not damage the edge of the blade. Although it is wider than existing cutting boards, the thickness is adjusted to make it lightweight and easy to use. Both sides of the wood mouth are waterproofed (prepolymer coating) to prevent blackening.



Delivery Records

Because this is a new product, there is no delivery record yet.

TOSARYU Corporation

+81-889-49-0111 +81-889-49-0049

2830 Uranouchi Higashibun, Susaki-shi, Kochi Prefecture 785-0163, Japan

<http://www.tosaryu.com/>

hinoki@tosaryu.com

INDUSTRIAL
MACHINERY

AGRICULTURAL
MACHINERY

CIVIL
ENGINEERING
MACHINERY

ENVIRONMENTAL
AND BIOMASS
MACHINERY

OTHER
MACHINERY

DISASTER
PREVENTION
PRODUCT

PAPERMAKING

WOOD
PRODUCTS

OTHER
PRODUCT

HiTOKi Gold Stretch Eye Mask



A miraculous 15-minute makeover

- Quantity: 60 sheets
- Price: ¥7,000 (before tax)

A sheet mask for the skin around your eyes, laugh lines, and neck. The water that is the product's base ingredient comes from the deep ocean off Muroto in Kōchi, while the sheets are made of nonwoven fabric also produced in Kōchi. Holding rich moisture in abundance, the sheets quickly bring elasticity and luster to your skin. Made with five skin factors lavishly compounded from ingredients including syn-ake, matrixyl 3000, edelweiss stem-cell extract, SESAFLASH, and not least, colloidal gold, these rich moisturizing masks help relieve the effects of aging.

✓ Delivery Records

Japanese beauty salons, with overseas sales in China and Hong Kong

📖 Other Information

We also take orders for OEM products.



Amenity Company, Limited

☎ +81-88-878-1066 🏢 +81-88-878-1067

📍 17-23 Sugiuru, Kochi-shi, Kochi Prefecture 780-0072, Japan

🌐 <http://www.amenity.ne.jp/>

✉ Info@amenity.ne.jp

Aroma oil of Yuzu, Yuzu extract distilled water



The natural aroma of Yuzu citron from a microwave extraction method.

We use an innovative extraction method through microwave irradiation without using any organic solvents or water vapor. We use Yuzu citron from Tosa Mountain in Kochi Prefecture, which is known for its quality, to produce the original aroma of the raw material and offer a safe and reliable product. It can be used in a wide range of applications, such as cosmetics, aromas, bath salts, as well as food products including drinks, confectionery, and ice cream.

✓ Delivery Records

Flavor and fragrance manufacturers, trading companies (Japan and overseas)

📖 Other Information

Essential oil: 1kg (keep frozen)
Water: 18.5kg (keep frozen)
1.8 kg (keep refrigerated)



ASAHI FRESH CO., LTD.

☎ +81-88-894-6363 🏢 +81-88-894-6700

📍 1402 Hirookanaka, Harunocho, Kochi-shi, Kochi Prefecture 781-0302, Japan

🌐 <http://www.asahi-fresh.jp/>

✉ furesyu@asask.co.jp

Jigging Lure & Rods Garage Nagi



Breathe new life into the world of jigging.

Jigging rods for "slow pitch jerk"
「CROSS-BORDER」、#2, #4, #6, #8, #12, #14
Jig weight 80g - 1000g
Range: shallows (20m) to deep (1000m)



✓ Delivery Records

80 shops in Japan 10 countries

Jigging Lure for "slow pitch jerk"
「DREPPER」: 150g, 200g, 250g, 300g, 400g,
600g, 800g, 1000g, 1200g,
6 colors



DEEPARS FACTORY CORPORATION:

+81-88-854-5606 +81-88-854-5601

3105-3 Nagahama, Kochi-shi, Kochi Prefecture 781-0270, Japan

<https://www.garagenagi.com>

info@garagenagi.com

Mass Flow Controller/Gas Mixer



Controlling gas flow automatically with high accuracy, mixing gas easily

◇ Mass Flow Controller ◇

Because automatic flow control is performed by measuring the mass flow rate of gas, there is no need to make corrections due to changes in factors such as the environmental temperature and operating pressure, making this controller capable of accurate and stable measurement and control.

◇ Gas Mixer ◇

This device is equipped with a mass flow controller to control the flow rate of each gas according to the desired flow rate ratio, and an inline mixer to mix the gases.



Other Information

In addition to the standard gas mixer, customized gas mixers can be designed and manufactured according to your needs and budget.

FCON CO., LTD.

+81-88-855-7100 +81-88-855-7166

Nankoku Office Park Center 109, 1-1-1 Hotarugaoka, Nankoku-shi, Kochi Prefecture 783-0060, Japan

<http://www.fcon-inc.jp/>

contact@fcon-inc.jp

Ethic and Organic way of living is our faith and responsibility: "SaFo"



Organic textile brand with Japanese Craftsmanship

The brand name "SaFo" comes from the Japanese word "saho," which combines the ideas of faith and elegance, responsibility and manners. The custom of valuing courtesy in Japan is also a part of the manners that let people live enjoyably with each other. SaFo expresses perfectly the concept behind each item of the brand, encouraging a more careful and refined attitude on our ways of consuming.

SaFo is launched by organic textile company, Heart Co., Ltd. Heart has passed annual on-site factory inspections by ECOCERT, the world's leading organic certification organization, and has obtained the GOTS (Global Organic Textile Standard) certification.

The series includes bedding such as pillows, comforters, and mattress, as well as towels, blankets, baby wears and so on, all made of organic cotton. Using exclusively high quality organic textiles, all products have delicate texture and soft touch.

We hope that our brand SaFo will become the model for creating safe and reliable products, with people experiencing the pleasant texture of organic products.

SaFo
ORGANIC



Obtained Global Standard Organic Certification



Delivery Records

Opened a company-operated store at Tokyu Hands Shibuya in June 2020.

Other Information

- Organic Certification Body: Ecocert
- Organic Certification Standard: GOTS & OCS



Heart Co., Ltd.

+81-88-882-4788 +81-88-882-4822

4-18 Kitacana, Kochi-shi, Kochi Prefecture 781-0073, Japan

<https://safo.jp/>

organic@safo.jp

SAKON+



Your cooking will change dramatically

With Micro Spark cladding and ultra-hard titanium carbide blended into the cutting edge, the SAKON+ represents an entirely new concept: a blade with a tip that remains serrated and keeps cutting even as the knife wears down.



Image of blade tip processing



broadcast on NHK World



Delivery Records

Domestic knife stores, overseas kitchenware stores, and online sales

Other Information

SAKON+ was broadcast around the world on the NHK World science program "Science View" in December 2017, during which the cutting mechanism was introduced by Anchor Michelle Yamamoto. In July 2019, it appeared on the program "Denjiro The Experiment", and received a great response both in Japan and overseas.

Hokiyama Cutlery Co., Ltd.

+81-887-53-5111 +81-887-53-5115

3-15 Sakaemachi, Tosayamadacho, Kami-shi, Kochi Prefecture 782-0039, Japan

<https://www.hokiyama.com/>

info@hokiyama.com

IC Bordeaux (Copper fungicide)



Conforming to the Organic JAS Law. Excellent in its residual effect. No limitation in the number of days prior to harvest and the spreading number of times.

IC Bordeaux is a copper fungicide, the copper compound, the same as "Bordeaux Mixture" made from lime and copper sulfate. It is an agricultural chemical that reduces the time for making by hand and is easy to use, i.e. an environmentally-friendly fungicide for killing pathogenic microbes on fruit trees and vegetables. Effective ingredients are inorganic substances, so there are no concerns about drug-resistant bacteria. As it is excellent in adhesiveness and rain fastness, its protection and bactericidal effects are kept for a long time. It has been used regularly for 26 years for more than 30 farm products such as grape, citrus, peach, apple and tomato, its safety and high effect having been proved firmly. The quality of IC Bordeaux is also appreciated for farm products in Korea, China, Taiwan and Vietnam. Three types of solution are prepared for different farm products.



Delivery Records

National Federation of Agricultural Cooperative Associations, domestic dealers for agricultural chemicals, etc.

Other Information

IC Bordeaux 66D: Basic copper sulfate 28.1%
IC Bordeaux 48Q: Basic copper sulfate 31.2%
IC Bordeaux 412: Basic copper sulfate 35.0%

Inoue Calcium Corporation

+81-88-855-9975 +81-88-880-8808

Nankoku Office Park 2-3-5 Hotarugaoka, Nankoku-shi, Kochi Prefecture 783-0060, Japan

<http://www.inoue-calcium.co.jp/>

international-sales@inoue-calcium.co.jp

Red coral praying beads



Coral beads are said to be the only beads that can be passed down from generation to generation.

Coral beads are said to be the only beads that can be passed down from generation to generation. These are the same type of prayer beads that Kukai received during the Tang Dynasty in China, with one hundred and eight beads. It is a superb article that you can carry with you on a daily basis, not only as a Buddhist ritual object, but also as a talisman.

Coral has long been used as a talisman to ward off evil and bad luck. In addition, coral beads are said to be the only prayer beads that can be passed down from parent to child from generation to generation.



Other Information

We belong to Kochi Coral Cooperative Association, and only deal with genuine natural gem corals.

Kensen35 CO.,LTD.

+81-88-873-5111 +81-88-873-4126

9-13 Sakaimachi, Kochi-shi, Kochi Prefecture 780-0834, Japan

<https://www.kensen35.com>

info@kensen35.com

PAN OISHIMAMA (Keep Bread Delicious)



First-of-its-kind freshness preservation bag for bread

This is a bag that preserves the taste and quality of bread.

It makes bread resistant to mold at room temperature, and it reduces changes in aroma, taste, and texture of bread when frozen, making it possible to enjoy the flavor of bread without having to re-bake it. The Keep Bread Delicious bread bag will help you when you want to freeze fine breads or homemade breads while they are still tasty, or when you want to store bread as safely as possible in your daily life.



[Delivery Records](#) [Other Information](#)
New product Launch in fall 2020



KINOUSOZAI Company, Limited

+81-88-822-8197 +81-88-823-6137

6-13 Nijudaimachi, Kochi-shi, Kochi Prefecture 780-0843, Japan

<https://kinousozai.co.jp/>

info@kinousozai.co.jp

Repellent Spray against Hornets



Repellent against hornets without killing them by using the scent of apricot flowers

This is a revolutionary hornets repellent developed through a university venture. This spray agent will quickly repel hornets and turn off their attack instincts, allowing a safe escape. The main ingredient is the scent of flowers, which has little effect on bees but a dramatic effect on all wasp families, including hornets.

[Delivery Records](#)

National Federation of Forest Owners' Co-operative (Woodland Co., Ltd.), Kochi University, The University of Tokyo, Tamagawa University, Kochi Prefectural Makino Botanical Garden, Yusuhara Town (Kochi Prefecture), Japan Native Honeybee Society (Iwate Prefecture), Kochi Prefectural Office, Kagawa Prefectural Office, Ino Elementary School (Agawa-gun, Kochi Prefecture), Nankoku City Fire Department, Kagoshima City Fire Department, Kochi University Hospital, Kochi Medical Center, Hokuriku Electric Power Co., Chugoku Electric Power Co., Kyushu Electric Power Co., national research institutes, ITADAKI General Incorporated Association (organizer of trail running and other events in the Chugoku and Shikoku region)

[Other Information](#)

University venture

Awarded the 33rd Kochi Prefecture Local Industry Awards, Encouragement Award
Awarded the 2019 Shikoku Industrial Technology Awards, Technological Innovation Award



KINP CO., LTD. (Kuroshio Institute of Natural Product chemistry)

+81-90-4334-4201 +81-88-813-0339

Faculty of Agriculture and Marine Science, Kochi University
B200 Monobe, Nankoku-shi, Kochi Prefecture 783-8502, Japan

<http://kinp-chem.co.jp/>

cskim@kinp-chem.co.jp

Shoyaku No Meguriyu (Crude Drug Beauty Bath Powder)



Five kinds of natural herbal medicines and hot spring ingredients promote circulation, leading to a beautiful and healthy body.

Shoyaku No Meguriyu was developed by Matsuda Pharmaceutical based on its long years of research on herbal medicines, focusing on herbal medicines that are effective at the optimum temperature for bathing. Five kinds of natural herbal medicines have been selected to improve the circulation of the body, and the combination of hot spring ingredients not only makes the water soft, but also draws out the active ingredients of these herbal medicines. The full power of herbal medicines will warm your body from the core and improve circulation, leading to a beautiful and healthy body.

Delivery Records

Sales through our own e-commerce site, sales to other mail-order companies

Other Information

(Matsuda Pharmaceutical online shop)

https://meguriyu.matsudaiyaku-shop.jp/sm_1703_1_a.html



Matsuda Pharmaceuticals CO., LTD.

+81-88-862-1666 +81-88-862-1770

229-1 Soyama, Nankoku-shi, Kochi Prefecture 783-0052, Japan

<http://www.matsudaiyaku.co.jp/>

nangoku@matsudaiyaku.co.jp

3D Figure Modeling



Create exciting scenes with our elaborate craft skills. Leave everything from design to construction up to us!

FRP (fiberglass reinforced plastic) and various other materials and construction methods can be used for large-scale productions for theme parks, shows, events, and stages.



■ Kihoku Town Demon Monument
W 2000×H 4700×D 2000 FRP,
steel frame, resin mortar, paint



■ Navy Type Reconnaissance Seaplane Full-scale Replica
W 12800×H 5040×L 10840 FRP steel, paint



■ Kochi Ryoma Airport Sakamoto Ryoma Statue
W 1600×H 2000×D 1200 FRP paint

m.e.works inc.

+81-88-856-9914 +81-88-856-9915

2098-2 Koda, Kochi-shi, Kochi Prefecture 780-8040, Japan

<https://meworks.jp>

info@meworks.jp

Jewelry Box



Preserved flower arrangements using Tosa Japanese paper

Made from gypsophila from Kochi Prefecture, and various colors of roses are available.

[Contents]

Preserved flower rose, preserved flower gypsophila from Kochi Prefecture, preserved flower leaf, Tosa Japanese paper, case



Rdesignstyle

+81-88-885-9330 +81-88-885-7470

3-3-32 Takasushinmachi, Kochi-shi, Kochi Prefecture 781-8122, Japan

<https://www.rdesignstyle.com>

rdesign@df.moo.jp

Electrolytic hydrogen water purifier "TRIM ION GRACE"



With this water, let's live through it.

The water used in dialysis field requires uncompromising quality. We bring the advanced technology refined in the medical field to the home.

We made GRACE an unprecedented electrolytic hydrogen water purifier based on this concept. By incorporating a high-performance hybrid electrolysis system, we have succeeded in producing electrolytic hydrogen water with an extremely high hydrogen concentration. Make highly concentrated and medically effective electrolytic hydrogen water a natural part of your daily life.

TRIM ION GRACE



☒ Delivery Records
80,000 units shipped



Torim Electric Machinery Corporation

+81-88-804-8510 +81-88-804-8508

1-5-2 Hotarugaoka, Nankoku-shi, Kochi Prefecture 783-0060, Japan

<http://www.trim-em.jp/>

temkeiri@nihon-trim.co.jp

TOSA santok forged knives(Nickel Damascus steel 33 layer VG10)



Enjoy the taste of seasonal ingredients. The good cutting quality makes work more pleasant.

Cooking seasonal ingredients with this sharp knife will make cooking more enjoyable. A Santoku knife is the most common kitchen knife in Japanese households. It can be used for all kinds of fish, meat, vegetables, and fruits. The blade is double-edged and can be used by either right- or left-handed users. The steel used has a 33-layer structure consisting of stainless steel and VG 10, a high-hardness, high-carbon material.

A beautiful Damascus pattern like the grain of wood spreads over the entire surface of the blade, creating a sense of luxury.

Delivery Records

Japan and overseas (major department stores, outdoor stores)

Other Information

Overall length/blade length/width/thickness:332/200/48.5/2.3

Weight/ blade shape: 235g / Double-edged Steel/handle/box:Damascus 33-layer VG10/sandalwood/ with dedicated case



Toyokuni Co.,Ltd.

+81-88-862-2819 +81-88-862-2817

728-2 Kameiwa, Nankoku-shi, Kochi Prefecture 783-0071, Japan

<https://toyokuni.net/>

info@toyokuni.info

GS bacteria



Zero equipment costs. Lakes, oceans, and rivers can be revived simply by adding GS bacteria.

Selected as an environmental technology demonstration project by the Ministry of the Environment in FY2019, demonstration tests and verifications are being performed. (Search on the internet with the keywords, the Ministry of the Environment and ETV, Demonstration No.:020-1902) Combining granular and liquid forms, it is inexpensive, improves odor, reduces sludge, and achieves effective water purification. This product helps people to return to the correct laws of nature without using any chemicals or artificial power. Unlike forced methods, once the natural cycle is returned to, it is possible to maintain the beauty of nature forever with only a small input.

Delivery Records

Kochi Castle Moat, Nomi Bay, Uranouchi Bay, Fukuroi Water Supply (Tokushima Prefecture), Matsuyama Castle, Amakusa (Kumamoto Prefecture), Toda Daiichi Sky Heights Pond (Saitama Prefecture), Kasaoka Bay Land Reclamation District (Okayama Prefecture), and many others



Ueta Microbes Co., Ltd.

+81-889-42-4620 +81-889-42-5515

93 Kirima Nishi, Susaki-shi, Kochi Prefecture 785-0059, Japan

<https://gskin.jp>

info@gskin.jp

Precious Metal Evaporation Deposition Materials(for pellets or shots)



High-quality precious metal materials manufactured according to the purpose of use.

Precious metal evaporation deposition materials are used for semiconductors, electronic parts, and various kinds of displays. To meet the demands for high purity and uniform shape, we insist on high quality when manufacturing products. As we are able to adjust size or blending according to the purpose of use, please do contact us for consultation.



pellets_Pt



pellets_Au



shots_Ag

Delivery Records

Semiconductor or device manufacturers, both in Japan and abroad, and domestic trading companies.

Other Information

We can process precious materials into various shapes, like powder, chips, lines or plates, etc., as well as evaporation deposition materials. First of all, consult us.

※We appreciate your understanding that we may not meet your request depending on the contents.

YAMAKIN CO., LTD.

+81-887-55-0120 +81-887-55-0053

1090-3 Otani Kamibun, Kagami-cho, Konan-shi, Kochi Prefecture 781-5451, Japan

<https://www.yamakin-gold.co.jp/>

kouchi-soumu@yamakin-gold.co.jp

INDUSTRIAL
MACHINERY

AGRICULTURAL
MACHINERY

CIVIL
ENGINEERING
MACHINERY

ENVIRONMENTAL
AND BIOMASS
MACHINERY

OTHER
MACHINERY

DISASTER
PREVENTION
PRODUCT

PAPERMAKING

WOOD
PRODUCTS

OTHER
PRODUCT



memo



A series of horizontal dotted lines for writing, spanning the width of the page below the header.

「Manufacturing General Technology Expo in Kochi」



<https://kochi-monodukuri.com>



Disaster Risk Reduction and Management Products Portal Site of Kochi

「KOCHI BOSAI」



<https://kochi-bosai.com>



Official Website for Tourism in Kochi

「VISIT KOCHI JAPAN」



<https://visitkochijapan.com/>



INDEX Company Index

A	AKATSUKI INDUSTRIAL CO., LTD	15	KINOUSOZAI Company,Limited	46	SKK Corporation	13
	Amenity Company, Limited	42	KINP CO., LTD. (Kuroshio Institute of Natural Product chemistry)	46	SKY ELECTRONICS CO., LTD.	26
	Aqua System Co., Ltd.	15	Kochi Marutaka Co., Ltd.	23	SYMTEC CO., LTD.	13
	ASAHI FRESH CO., LTD.	42	Kochi Seiko Co., Ltd.	39	T Taiyo Co., Ltd.(E&A division)	11
C	CHIKAMI MILTEC INC.	20	KOWADENSHI Company, Limited	17	Takashina Life Preservers Co., Ltd.	27
	Chikazawa Paper Company, Limited	29	KOWATEC Co., Ltd.	17	Tamtec Co., Ltd.	14
	Chuo-Seiki Co., Ltd.	6	M Matsuda Pharmaceuticals CO., LTD.	47	Tanaka Shoku Co., Ltd.	27
	COSUMO KOBO CO., LTD.	37	m.e.works inc.	47	Techno Hirose Co., Ltd.	36
D	DAISEN Co., Ltd.	21	MINIPACK CO., LTD.	32	Toda Shoko Incorporated	40
	DEEPARS FACTORY CORPORATION	43	Miroku Machine Tool, INC.	6	Torim Electric Machinery Corporation	48
E	ECOASU UMAJIMURA CO., LTD.	38	Miroku Technowood Co., Ltd.	40	Tosa Denshi Corporation	8
F	FCON CO., LTD.	43	Mitsuwa Sangyo Co., Ltd.	19	TOSA KUMIKO Co., Ltd.	41
	FUJI PAPER CHEMICAL CO., LTD.	30	MORISA CO., LTD.	33	TOSA TOYO Co., Ltd.	18
G	GIKEN LTD. Tokyo Head Office	21	Motoyama Printing.co.ltd. Paper message Department.	33	TOSARYU Corporation	41
	GROWING	38	N NAIGAITENGUCHOUSI CO., LTD.	34	Tosatech Co., Ltd.	18
H	HAYASHI COMPANY, LIMITED	30	Nishinomiya Sangyo Co., Ltd.	24	Tosatsushin Co., Ltd.	28
	Heart Co., Ltd.	44	O OSASI Technos Inc.	24	Toyokuni Co., Ltd.	49
	HIDAKA WASHI CO., LTD.	31	P Pacific Software Development Co., Ltd.	19	TOYOTOKUSHI CO., LTD.	36
	Hirose Paper Mfg. Co.,Ltd.	31	R Rdesignstyle	48	TS-Seal Co., Ltd.	28
	Hokiyama Cutlery Co.,Ltd.	44	RYOCO SEIKI CO., LTD.	7	TSUKASA JUKI Co.Ltd.	14
I	IIDA Tekko Co., Ltd.	12	S Saibara Iron Works Co., Ltd.	12	U U-CHIKA CO., LTD.	11
	Ikegawa Mokuzai Kogyo Co., Ltd.	39	Sakamoto Giken Corporation	7	Ueta denki Co., Ltd.	8
	Inoue Calcium Corporation	45	Sansai Co., Ltd.	34	Ueta Microbes Co., Ltd.	49
	Interest-Production	22	Sansho Shigyo Co., Ltd.	35	Ujiden Chemical Industry Co., Ltd.	9
	IT PRODUCT CO., LTD.	22	Sanwaseishi Co., Ltd.	35	W Wada Kikai Co., Ltd.	9
	Iwaya Co., Ltd.	23	Sasaoka Co., Ltd.	10	Wako Paper Co., Ltd.	37
K	KAKIUCHI CO., LTD.	16	Shikoku Jokan Co., Ltd.	25	Y YAMAKIN CO., LTD.	50
	KANEMATSU ENGINEERING CO., LTD.	16	SHIMA INDUSTRIES CO., LTD.	25	YAMASAKI GIKEN CO., LTD.	10
	Kawano paper Co., Ltd.	32	Shimanto Concrete Co., Ltd.	26	Yoshimura Denso Co., Ltd.	29
	Kensen35 CO., LTD.	45	Shinwa Giken Company, Limited	20		

Offices

Public Interest Incorporated Foundation

Kochi Industrial Promotion Center

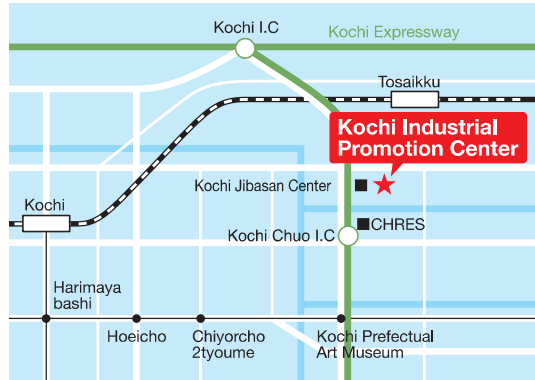
3992-2 Nunoshida, Kochi-shi, Kochi

Phone +81-88-845-6600

Product & Trade Development Center

3992-2 Nunoshida, Kochi-shi, Kochi

Phone +81-88-845-7110



Tokyo Marketing Headquarters

(Trade Coordinator – Tokyo representative)

room802,8F Uchisaiwaicho Daibiru Building

1-3-3 Uchisaiwaicho Chiyodaku, Tokyo

Phone +81-3-6452-8830



Osaka Office

(Trade Coordinator – Osaka representative)

1F, Senba Central Bldg.

2-6-8, Honmachi, Chuo-ku, Osaka

(Kochi Prefecture Osaka Office)

Phone +81-6-6244-7934



Nagoya Office

(Trade Coordinator – Nagoya office)

Room 803, 8F, Sakae Members Office

4-16-18, Sakae, Naka-ku, Nagoya-shi, Aichi

Phone +81-52-684-4904

