

Guidebook for Selected Products in Kochi 2023

Special Edition



Products Promoted by
Kochi Industrial Promotion Center



高知家

Message from President

The Kochi Industrial Promotion Center is a public interest incorporated foundation established for the purpose of promoting industry in Kochi Prefecture and contributing to the development of a vibrant local economy by providing comprehensive support for the revitalization of local industries that take advantage of Kochi's advantages and strengths.

At Kochi Prefecture, we have formulated the "Kochi Prefecture Industrial Promotion Plan," a comprehensive plan for achieving economic revitalization, and are working toward the realization of a "Kochi Prefecture where local production and foreign trade are progressing and young people can work with pride and ambition in their local communities."

This prefectural plan aims to cultivate "industries with high value-added and labor productivity," and will actively support overseas expansion of companies in the prefecture by setting "promotion of globalization" as a key point of focus.

The Kochi Industrial Promotion Center also supports companies that are trying to expand their business overseas by participating in overseas exhibitions, accompanying overseas visitors, supporting business negotiations, and matching them with trading companies in Japan and overseas, and starting in FY2023, we will establish local support desks in Thailand and Vietnam to further strengthen our globalization efforts.

As part of these efforts, this catalog was created to introduce an overview of Kochi Prefecture and the products of manufacturing companies in this prefecture to the overseas markets.

We hope you will read it and deepen your understanding of Kochi Prefecture's manufacturing companies and their products. Thank you very much.



October, 2023

Kochi Industrial Promotion Center
Norihisa Kuriyama
President



INDEX

company	product name	page
INDUSTRIAL MACHINERY		
Saibara Ironworks Co.,Ltd	Unit type concrete molding equipment "SAIBARA-EV20 (15)"	2-3
TOSADENSHI Inc.	Reliable company, Many clients	4-5
UETA ELECTRIC CO.,LTD	Factory cranes (overhead cranes/bridge cranes)	6-7
UJIDEN CHEMICAL INDUSTRY CO.,LTD.	CENTRIFUGAL DRY POLISHING MACHINE	8-9
YAMASAKI GIKEN CO., LTD.	NC milling machine	10-11
CIVIL ENGINEERING MACHINERY		
GIKEN LTD.	Press-in Methodology with the SILENT PILER™	12-13
SKK Corporation	Powerful Crane for People and Eco Friendly	14-15
ENVIRONMENTAL AND BIOMASS MACHINERY		
Aqua System Co., Ltd.	Contact aeration type wastewater treatment system,Touchstone system	16-17
Kakiuchi Co.,Ltd.	Twin dies type pelletizer "Ryuzo-kun"	18-19
KOWATEC Co., Ltd.	Microacid Chlorine Acid Water Generator KOWA CLEAN 20C	20-21
DISASTER PREVENTION PRODUCT		
CHIKAMI MILTEC INC.	Geodrain SPD method	22-23
Kochi Marutaka Co.,Ltd.	Long Span Bridge	24-25
OSASI Technos, Inc.	River/reservoir monitoring system	26-27
PAPERMAKING		
Hidakawashi Co.,Ltd.	Japanese Paper, TENGUJO Paper.	28-29
Hirose Paper Mfg Co.,Ltd.	Wet-laid Non-woven Fabric (High Performance Paper)	30-31
MORISA CO.,LTD.	Laminated Japanese Washi Mask Case	32-33
Wako Paper Co., Ltd.	Paper wipes	34-35
WOOD PRODUCTS		
TODASHOKO Co.,Ltd	Wood packing (MOKUMEN)	36-37
Tosakumiko Co.,Ltd.	RonRon Panier	38-39
TOSARYU CO.,LTD.	JAPANESE SPA	40-41
OTHER PRODUCT		
FCO CO.,LTD.	Mass Flow Controller C2000 series	42-43
Heart Co.,Ltd.	Organic Gauze Blanket	44-45
HOKIYAMA CUTLERY CO.,LTD.	Japanese Clad Steel Kitchen Knives	46-47
INOUE CALCIUM CORPORATION	IC Bordeaux (Copper fungicide)	48-49
KINOUSOZAI CO.,LTD.	Pan Oishii Mama	50-51
YAMAKIN CO., LTD.	Dental material manufacturer, YAMAKIN Co., Ltd.	52-53



Kochi SDGs promoting companies (as of the end of Sep. 2023)

Kochi Prefecture registers companies that are making efforts to achieve the SDGs.

Unit type concrete molding equipment "SAIBARA-EV20 (15) "

This single device can mold, fill, and supply concrete products with wireless functionality!

OPERABILITY

MOBILITY

SAFETY



Unit type concrete molding equipment

SAIBARA-EV20

S-M-T type

PATENT PENDING



**FULLY
WIRELESS**
battery powered

**A monitor can be attached, so you can
check the filling condition remotely!**



- ✓ Can be integrated with existing cranes.
- ✓ Leakage of ready-mixed concrete is almost zero.
- ✓ Can be used at various sites, in factories, and at any location.
- ✓ Labor saving by remote operation to reduce the workload of workers.
- ✓ Significantly improved workability, productivity and safety.

Now showing



Ready to operate immediately after delivery!

Please feel free to contact us as an immediate force on site.

In addition to concrete pump trucks, the most common method of pouring ready-mixed concrete at civil engineering and construction sites is with suspended buckets. This suspended bucket requires workers to open and close the bucket gate directly from high places with poor footholds, which is inefficient and, above all, very

dangerous. Therefore, we developed a compact and logical suspension-type ready-mixed concrete feeding device that enables workers to work efficiently by wireless remote control in a safe location.

- ① Remote operation ensures safety and peace of mind
- ② A wireless electric motor is installed in the feeding device, and the gate opening/closing speed can be adjusted to improve the feeding speed operation and increase work efficiency. Immediate response is possible in any indoor or outdoor location thanks to the battery-powered system.
- ③ Utilizing accumulated data and know-how from our extensive industry experience, we have reduced the weight and size of the product (approx. 20% less than standard), generalized the parts and strengthened the mass production system to reduce the price, resulting in a cost reduction of about 60% compared to competitors' products.

Precast concrete products are used as block revetment systems in rivers and harbors for disaster prevention such as typhoons, landslides, floods, tsunamis, and earthquakes. They are also used as a retaining wall and an environmental protection block.

Precast concrete products have the advantage of being safer and more efficient in a shorter construction period.

The unit type concrete molding equipment "SAIBARA-EV20 (15)" enables molding, filling, and feeding of precast concrete products in a single unit, making it applicable to a wide variety of applications.



[Standard type "EV-20" (V≒2.0 cubic meters) specifications] *Specifications such as capacity, etc. are available on request

■ Main unit price: 2.5 to 5 million yen (depending on capacity) (tax not included) (*Expenses for transportation and test operation, etc. will be charged separately.)

■ For specification "EV-20" (V≒2.0 cubic meters)

- ① Approximate dimensions: Width 2,200mm × Depth 2,000mm × Height 1,600mm
- ② Main unit weight: W≒1,600kg
- ③ Can body capacity: V≒2.0m³ (NET)
- ④ Gate open/close type (fine adjustment possible)
- ⑤ Comes with a stocker (storage rack)

■ Remarks: Can be changed to any specifications as a separate option.

(*Can body capacity change, gate opening/closing: Hydraulic/pneumatic)

Please feel free to consult with us first.

[Export track record]

Currently expanding sales channels in Southeast Asia.

Video release



Saibara Ironworks Co.,Ltd

895 Takaoka-cho Kou, Tosa-city, Kochi, Japan 781-1101

mail:saibara@peace.ocn.ne.jp

http://saibara-iron.co.jp/en/

TEL:+81-88-852-1188 FAX:+81-88-852-5254



HP



Reliable company, Many clients

Our goal is to be an attractive company that contributes to the local community through electronics.

Solution to high-mix low volume production!

We create an attractive company that contributes to the local community through electronics.

TOSADENSHI Inc.

Headquarter / Headquarter Factory

61-10 Takaokacho-otsu, Tosa-city, Kochi

Headquarter : TEL:+81-88-850-2600

Headquarter Factory : TEL:+81-88-852-6633

<https://tosadenshi.co.jp/>

Development / Engineering Department

1029-4 Hasuike, Tosa-city, Kochi TEL: +81-88-856-8003

Takaoka office

414-8 Takaokacho-kou, Tosa-city, Kochi TEL: +81-88-821-8021

Kochi-minami office

2-5-55 Seto, Kochi-city, Kochi TEL: +81-88-842-0500

Tokushima office

5-190-5 Minamiokinosu, Tokushima-city, Tokushima TEL: +81-88-664-2005

Kochi-higashi office

1-8-37 Ikkumimamimachi, Kochi-city, Kochi TEL: +81-88-855-5887



TOSADENSHI VIETNAM,LTD

Lot lands I-6,ROAD #13,Industrial Group I,
Tan Binh Industrial Park Tan Phu Dist.HCM City
TEL 84 (0) 28-54355971



Currently, globalization and international division of labor are progressing rapidly.

In such an era, we are working hard to acquire new knowledge and advanced technology to meet the needs of our customers, and, as a group of electronics manufacturing experts, we are challenging new possibilities.

We aim to be an attractive company that can contribute to the local community through electronics.

For operations such as assembly and assembly of electronic components, overseas technology transfer is progressing from Japan.

In such an era, based on our unique manufacturing know-how cultivated over 36 years since our founding, we fully support a series of these operations, such as processing, assembling, adjustment, inspection, and shipment of small-lot electronic boards to designated locations with short delivery times.

3D image inspection device

Small chips such as 0402 and 0603 and multi-layer boards can be mounted with high quality. Surface mounting is one of the methods for mounting electronic components on a printed circuit board.

It is possible to mount eutectic solder and lead-free solder, and we support a wide range of mounter mounting, from single prototypes, high-mix, small-lot production to mass production. It also supports surface mounting of flexible printed circuits (FPC) and aluminum boards.



● Mountable parts

Chip parts (0402 and larger) QFP (0.4mm pitch, up to 52mm square) CSP

● Odd-form components

Connector (covered up to 80mm *41mm, 56mm *64mm)

◎ Board size

Large size board (covered from 50mm *50mm to 390mm *500mm)

Manufacturing in Vietnam, currently attracting attention!

By setting up a factory in Ho Chi Minh City, Vietnam, we provide high quality products at low cost. We have set up a factory in Vietnam since 2006 and are engaged in EMS business. The fusion of young and abundant labor force and Japanese technology is realized by Japanese staff in Vietnam, and we provide reliable products at a reasonable cost.

■ Main products

● Processing/assembly/manufacturing of electronic components

■ Main products

● Optical device, image stabilization unit, thermo module, oxygen sensor

● Substrate processing (Oxygen sensor, protection circuit, circuit unit board)



Vietnam office building and work scene

TOSADENSHI Inc.

61-10 Takaoka-cho otsu, Tosa-city, Kochi, Japan 781-1102
mail:k_yamauchi@tosadenshi.co.jp
<https://tosadenshi.co.jp/>

TEL:+81-88-850-2600 FAX:+81-88-850-2601



HP



Factory cranes (overhead cranes/bridge cranes)

High quality, durable and safe cranes



Since our company's establishment in 1983, we have been engaged in the manufacture and on-site installation of cranes as well as subsequent maintenance work. We have an extensive track record of repair work in factories, warehouses, shipyards, public testing laboratories, and cleaning plants.

◆ Crane manufacturing

- "High-quality, quick-delivery cranes" built with automatic crane welding systems.
- "Safe, comfortable, and quick cargo transport" is realized by automatic cargo sway control function.

◆ Maintenance

Our staff who have completed the voluntary periodic crane inspection guideline will provide maintenance in a responsible manner. Leave legal inspections, completion inspections, and renewal inspection preparations to us with peace of mind. We can also repair a wide variety of cranes, regardless of manufacturer. We own special aerial work vehicles and can provide repair services at night and on holidays.

Processable materials

Iron (SS, S/C, SUS, etc.), etc.

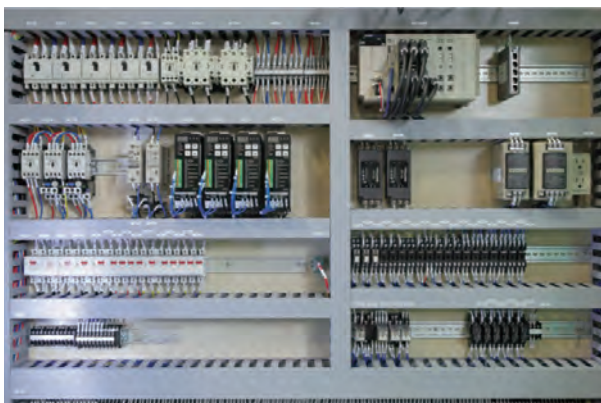
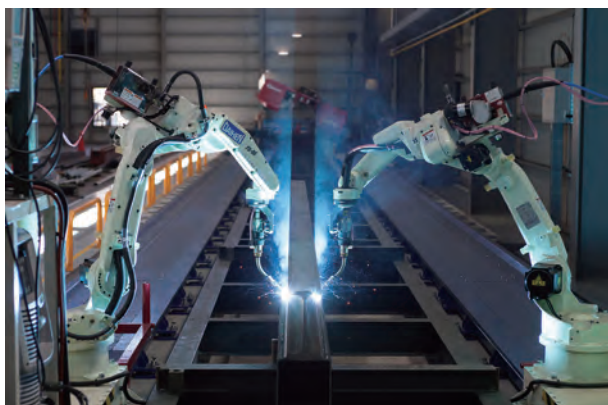
Processable range (weight, size, accuracy, etc.)

- Weight: 40 tons
- Size: 10m × 40m

We can handle prototypes from one unit. High-mix low-volume production is also possible.

Various certifications

Crane manufacturing licenses (trolley-type overhead and bridge cranes 106t, hoist-type terrain cranes 20.2t)
Construction permits (electrical work and machinery and equipment installation)



Product

- Design, manufacture and installation of various cranes
- Repair, maintenance, inspection and sales of various industrial equipment such as hoists, rebar processing machines, welding machines, etc.
- High-voltage and low-voltage electrical equipment construction
- Design and manufacture of various control panels
- Various programming

UETA ELECTRIC CO.,LTD

2-13-43 Seto, Kochi-city, Kochi, Japan 781-0250
mail:uetadenki@ebony.plala.or.jp
http://ueta-denki.com/

TEL:+81-88-841-1709 FAX:+81-88-841-1466



HP



CENTRIFUGAL DRY POLISHING MACHINE

Pioneer of clean dry polishing technology



Centrifugal High-energy Polishing system for Dry-polishing process

DC-series

Centrifugal High-energy Polishing system for Dry-polishing process

Gentle surface treatment by ultra high G-force generated by DC-multi centrifugal drive unit. Extremely high precision polishing by Dry-Medias~Ra0.001 μ m

Multi pot layout for parts size, geometry

Pot-layering system for liner/layout exchange

Safety Measure

- Smart-lock system in Front door during operation
- Easy-cramping system in Polishing pot
- Smart-detection for any abnormal operation

Options to do More

- Safety area sensor
- Touch Screen
- Auto positioning system
- Blower cleaning
- Dust collector system

DCB-series

High G-force + Fine Media stream generated by DCB-multi centrifugal drive unit.

Boxy container for batch finishing/Huge parts

Extremely high precision polishing by Dry-Medias~Ra0.001 μ m

Tailor made Jig-fixture system for every parts size/volume

Safety Measure

- Parts fall detecting device in Box
- Smart-lock system in Front door during operation
- Easy-cramping system in Polishing Box
- Smart-detection for any abnormal operation

Options to do More

- Safety area sensor
- Touch Screen
- Auto positioning system
- Blower cleaning
- Dust collector system

MEDIA FOR DRY POLISHING SYSTEM

Pioneer of clean dry polishing technology

Special polyamide-base Abrasive Media + Micro Abrasive technology

■ Line up from Fast-cutting to Mirror-polishing.

[DR-Media] Abrasive Medias for Dry-polishing process

Very stable polishing ability.

Never chipping/breaking during operation.



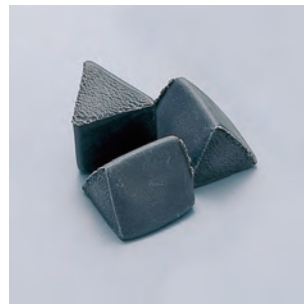
DFC-2



DFC-5



DMT-10



DMT-15



DLC-5



DLT-7



DRT-20



DMC-10

[Dry Organic Media]

■ Organic nut shell, corn cob Medias for Dry-polishing.



UJIDEN CHEMICAL INDUSTRY CO.,LTD.

5-7-34 Sanbashidoori, Kochi-city, Kochi, Japan 781-8010

mail:tosa@ujiden-net.co.jp

<https://www.ujiden-net.co.jp/en/>

TEL:+81-88-832-6162 FAX:+81-88-832-6165



Video



HP



NC milling machine

Easy-to-use, high-accuracy, and longer operating life NC milling machine

< Features of our milling machines >

1. General-purpose properties that anyone can use easily
2. Guidance function for immediate machining without using a programmed function
3. High accuracy and longer operating life

< Product Line-up >

General-purpose milling machine



Vertical milling machine



Vertical machining center



Horizontal milling machine



Double column type milling machine





General-purpose milling machine “YZ-8WR”

Our best-selling machine, the YZ-8WR, has a Z-axis mechanical manual handle and a rack-and-pinion system for vertical movement of the spindle head for light manual operation, and its structure with excellent accessibility and operability enables rapid machining of single parts. By positioning handles, levers, and switches in the "perfect place," users can handle the machine as if it were their own limbs, even during long hours of work, without any stress. The "processing guidance function" allows for immediate processing by simply selecting and entering numbers, making it easy to process arcs, slants, pockets, etc.

<Machine specifications>

- Table size : 1400×400mm
- Travel (X×Y×Z) : 850×400×520mm
- Spindle max speed : 2,000min⁻¹
- Spindle tapered bore : 7/24 taper ISO No.50
- Motor power for spindle : 3.7kW
- Floor space requirement
(W×D×H) : 2,950×1,870×2,499mm
- Machine weight : 3,700kg



Double column type milling machine “YZ-1321ATC”

The gate-type NC milling machine is based on the concept of "high accuracy, high rigidity, and space-saving". In addition to the space-saving gate-type structure, the crossrail elevation type, integrated bed with excellent rigidity realizes a highly rigid milling machine. Standard equipment includes scale feedback on all axes and a spindle head lubricating oil cooling system, ensuring stable accuracy. Another feature of this large-scale machine is that it is designed to be easy to operate with independent handles and levers on each axis.

<Machine specifications>

- Table size : 2,000×1,120mm
- Gate width : 1300mm
- Travel (X×Y×Z) : 2,100×1,500×850mm
- Spindle max speed : 3,000min⁻¹
- Spindle tapered bore : 7/24 taper ISO No.50
- Motor power for spindle : 11/15kW
- Floor space requirement
(W×D×H) : 5,700×4,200×2,900mm
- ATC : 24 tools
- Machine weight : 14,800kg

YAMASAKI GIKEN CO.,LTD.

No.2 Techno-Park, TosaYamada-cho, Kami-city, Kochi, Japan 782-0010
 mail:yzinfo@yamasakigiken.co.jp
 https://www.yamasakigiken.co.jp/

TEL:+81-887-57-6222 FAX:+81-887-57-6223



HP



Press-in Methodology with the SILENT PILER™

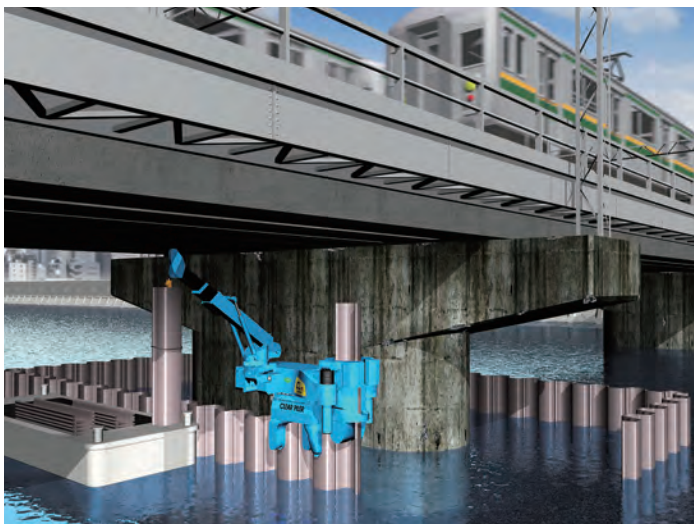
Solution for constructing a continuous wall in difficult site conditions



GIKEN manufactures piling machines called SILENT PILER and offers various construction technologies, the Press-in Method, to worldwide.

The SILENT PILER characteristics, which include but not limited to, low noise, no vibration, and compactness, allow to work in constrained areas, such as on water, low headroom, presence of neighbour buildings adjacent to site boundaries.

Non-Staging Method, one of the representative Press-in Methods, provides benefits to the overall construction works as it allows the installation of piles without a temporary stage, and consequently reduces construction cost and period.



This is a piling methodology for sites with limited overhead clearance using a dedicated model of SILENT PILER. It can build cut-off walls without disturbing surroundings such as the traffics on the bridge.

In addition, it does not require work to build a temporary bridge for traffic diversion, consequently contributing to lower CO₂ emissions.

Visit our website for more details.



Achievements

After the 1st SILENT PILER was invented in 1975, Press-in Method has been adopted in more than 40 countries worldwide.

For example, the Gyropress Method™ was adopted as innovative technology in a Japanese ODA project to renovate quay walls at the Dakar port, the Republic of Senegal. The project drew attention among ODA related-parties as an excellent example of how the one-of-a-kind Japanese technology contributes and solves construction issues in developing countries.

GIKEN LTD.

3948-1 Nunoshida, Kochi-city, Kochi, Japan 781-5195
mail:international@giken.com
<https://www.giken.com/en/>

TEL:+81-88-846-2933 FAX:+81-88-846-2939



Video Gallery



HP

▼Kochi



Tokyo ▶



Powerful Crane for People and Eco Friendly

"Leading marine crane manufacturer in Japan"



SKK is a renowned manufacturer specializing in marine cranes, primarily designed for use in harbor areas. With over 60 years of experience, we have consistently delivered tough, functional, and high-quality marine cranes.

Grab Dredging Crane

One of our standout products is the Grab Dredging Crane, which proves highly effective in dredging services, excavating sand and soil from the sea bottom. These cranes play a crucial role in port and civil engineering projects by facilitating the creation of ports through the dredging of sand and soil from the sea floor.

Our GE series of electric-driven grab dredging cranes offer several advantages. Firstly, they contribute to energy conservation and perform powerful dredging work. Notably, these cranes are equipped with electric-driven engines, significantly reducing noise levels around the crane and vastly improving the operating environment for the operator.

Additionally, our Grab Dredging Cranes employ a hybrid system that enhances fuel efficiency. This innovative system stores energy while the grab falls, acting as an assistant energy source that is reused during the process of winding up the grab bucket. Consequently, this mechanism reduces exhaust gas emissions and contributes to a decrease in CO₂ emissions, promoting environmentally friendly operations.

Multi-Purpose Crane



We offer a wide range of cranes with lifting capacities ranging from 200t to 700t, making them suitable for various lifting tasks. In addition to their primary use in lifting work, these cranes can be customized to function as Multi-Purpose Cranes, capable of performing tasks such as grab dredging, rock-breaking, and pile driving. The versatility of the Multi-Purpose Crane makes it a valuable asset in a variety of port civil engineering projects, including the installation of wave blocks, sinking fishing reef blocks, and pile driving operations.

One of the key strengths of our Multi-Purpose Cranes is their ability to withstand harsh sea environments. This durability allows them to excel not only in Japan but also in overseas projects, demonstrating their reliability and performance in challenging conditions.

At our company, all designs and manufacturing are tailored to meet the specific needs of our customers. Each crane is custom-designed according to the customer's requests and the requirements of the construction work. This personalized approach ensures that our cranes are optimally suited to the unique demands of each project, contributing to their effectiveness and efficiency. We take pride in providing exceptional solutions that cater to our customers' individual needs, resulting in successful and seamless project execution.

Maintenance

SKK is committed to providing maintenance support to all our customers, ensuring the safe and secure use of our cranes. Regular inspection and maintenance, including refueling and replacement of consumables, are essential to maintaining optimal crane performance. Our skilled technical engineers offer comprehensive crane inspections to identify any potential issues and ensure the crane's continued reliability.

For long-term performance and efficiency, we highly recommend regular overhauls for engines and torque converters. These overhauls contribute to extending the lifespan of critical components, minimizing downtime, and maximizing productivity.

We take pride in offering repair services and supplying parts to more than 30 countries, primarily in Asia. Should any parts be required following crane inspections or maintenance, we encourage customers to reach out to us.

At SKK, we are dedicated to supporting our customers throughout their crane's lifecycle, ensuring safe and efficient operations while maximizing their investment in our equipment.



SKK Corporation

(Former company name: Shikoku Kenki Corporation)

■ Head office 1-3 Yokohama-Nishimachi, Kochi-City, Kochi,
Japan 781-0242

■ Factory 12 Nishiminatomachi, Tadotsu-cho, Nakatado-gun, Kagawa,
Japan 764-0017

mail:sales@skk-crane.co.jp <https://www.skk-crane.co.jp/en/>

TEL:+81-88-842-6262 FAX:+81-88-842-4023



Youtube



HP



Contact aeration type wastewater treatment system Touchstone system



Feature

■High volumetric loading rate

This system can maintain a high concentration of MLSS in the aeration tank and respond to an increase in inflow load such as an increase in the amount of treated water.

■Resistant to load fluctuations

This system flexibly responds to fluctuations in water volume and concentration, and stably treats high-concentration wastewater.

■Reduction of excess sludge generation

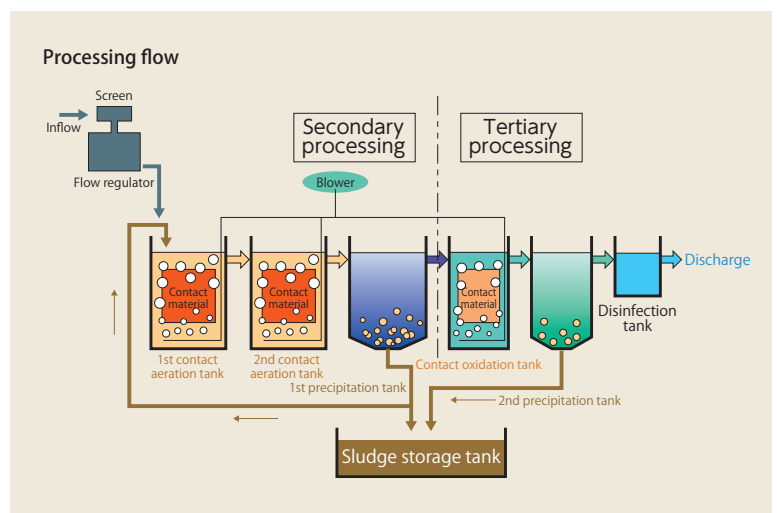
The metazoans that grow on the contact material prey on excess sludge and significantly reduce sludge generation.

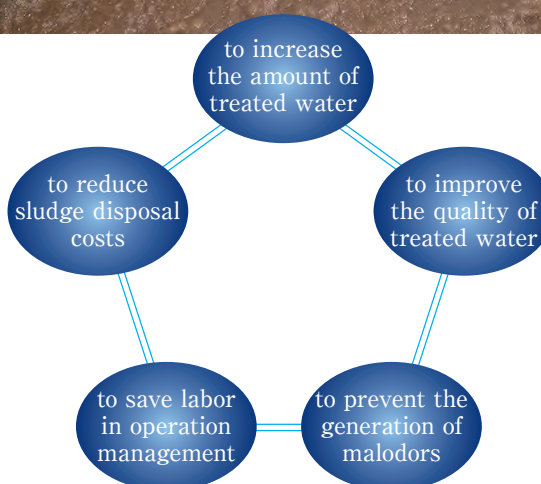
■Excellent maintainability

The contact material does not become clogged or reduced, and there is no need for replacement and replenishment.

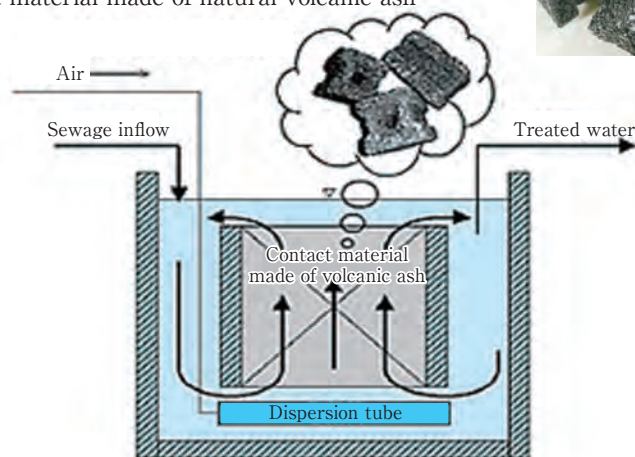
■Labor saving in operation management

Oxygen dissolution efficiency is high, so the frequency of air volume adjustment can be reduced.





Contact material made of natural volcanic ash



Contact aeration tank

■Removal of nitrogen and phosphorus

This system has the ability to remove nitrogen and phosphorus, which are the main causes of eutrophication in lakes and marshes.

■Prevention of foul odor

The tactile material prevents the generation of foul odors due to the deodorizing effect of the mixed andosol soil.

Aqua System Co., Ltd.

5-17 Harigi Minami, Kochi-city, Kochi, Japan 780-8089
 mail:aqua-o@axel.ocn.ne.jp
 http://www.aqua-water.jp/

TEL:+81-88-843-3666 FAX:+81-88-843-3669



HP



Twin dies type pelletizer "Ryuzo-kun"

Ideal for pelletizing organic fertilizers



Product features

- **High production capacity**

We adopt our original twin dice method. Therefore, compared to other manufacturers' granulators, it has outstanding production capacity in terms of cost effectiveness.

- **Low temperature granulation**

The granulation temperature is as low as 50°C or less. Therefore, it is possible to produce excellent quality biofertilizer feed.

- **Low running costs such as power consumption**

Ryuzo-kun has a simple structure and has few failures. Therefore, it can be used for a long time.

- **Automatic operation**

It can be controlled together with the front and rear equipment, and automatic operation is possible. You can operate it while doing other work.

- Pelletization enables mechanization of fertilizer spraying.
Improving spray efficiency saves time.
- Prevention of scattering due to wind when spraying.
- Delayed fertilizer effect
- Large bulk specific density and volume reduction by pelletization.
You can make good use of storage space.



Fermented chicken droppings pellets

Lineup of 4 models according to production volume



	Ryuzo-kun (KR6N)	Ryuzo-kun Junior (KR4N)	Ryuzo-kun Baby (KR3N)	Ryuzo-kun Mini (KR2N)
Production capacity	1,000kg/hour	500kg/hour	300kg/hour	200kg/hou
Die diameter	Φ604mm	Φ412mm	Φ300mm	Φ206mm
Granulation hole diameter	Φ4.3,5,6,7,10mm	Φ4,5,6,8mm	Φ6,8mm	Φ6,8mm
Body external dimensions (cm)	145W×211D×203H	130W×185D×175H	108W×127D×160H	57W×91D×105H
System weight (excluding control panel)	3,500kg	1,900kg	1,200kg	480kg

Kakiuchi Co.,Ltd.

391-8 Nakajima Oko-cho, Nankoku-city, Kochi, Japan 783-0049
 mail:info@kk-kakiuchi.co.jp
<https://www.kk-kakiuchi.co.jp>

TEL:+81-88-866-2848 FAX:+81-88-866-0261



HP



Microacid Chlorine Acid Water Generator KOWA CLEAN 20C

For hygiene management and measures to prevent food poisoning and infectious diseases in the future



Weight: 2.8 kg

Dimensions: W × D × H, mm 270 × 107 × 270

Generated water volume: 2.0L/min

Effective chlorine concentration: Approx. 35ppm ± 10ppm

pH: 5.0 to 6.5

Price: Open

Product features

Microacid chlorine acid water is a new cleaning and sanitizing water that can prevent bacterial contamination of food, including primary and secondary contamination, by washing or spraying with water. It is a human-friendly and ecological microacid chlorine acid water.



- 1 For preventing food poisoning by washing foodstuffs, etc.
For sterile cleaning of cut vegetables and raw seafood
- 2 For preventing food poisoning through sanitation of kitchen equipment
For sterile cleaning of equipment and utensils around kitchen countertops and sinks
- 3 For prevention of infectious diseases
For sterile cleaning of clothes, towels, floor surfaces, carpets, etc.

Introduced in food processing facilities, hospitals, dentists, nursing homes, daycare centers, etc.



KOWATEC Co., Ltd.

2040-1 Wakamiya Otsu, Tamura, Nankoku-city, Kochi, Japan 783-0092
mail:sales@kowa-tec.co.jp
<https://www.kowa-tec.co.jp/>

TEL:+81-88-804-6080 FAX:+81-88-804-6081

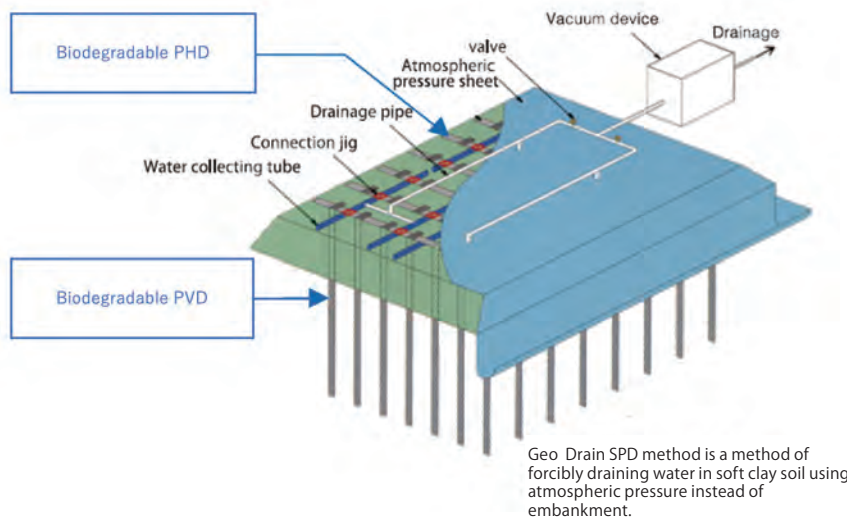


HP

KO  TEC

Geodrain SPD method

Prefabricated Vertical Drain (PVD) method without soil for preloading and sand blanket.



Geodrain SPD method can be used for infrastructure development such as the airport, the seaport and road constructions.

This method prevents ground subsidence and flood which may occur in future.

This method has advantage at the project site where sand and soil are difficult to procure.

Biodegradable “Nonal drain” and “BSB drain” allow following construction work, excavation and pipe jacking method, to be easy whereas the conventional materials often disturb it.





Geodrain SPD Method does not require sand blanket for horizontal drainage.

Soil for preloading is not required because special vacuum system is used for preloading instead of soil in Geodrain SPD method.

Unique “direct-connected piping” can achieve stable and high loading.

Construction period and cost can be saved by Geodrain SPD method.

Additionally, biodegradable PVD “Nonal drain” and biodegradable horizontal drain “BSB drain (Bio-SB Drain)” can be used for this method.

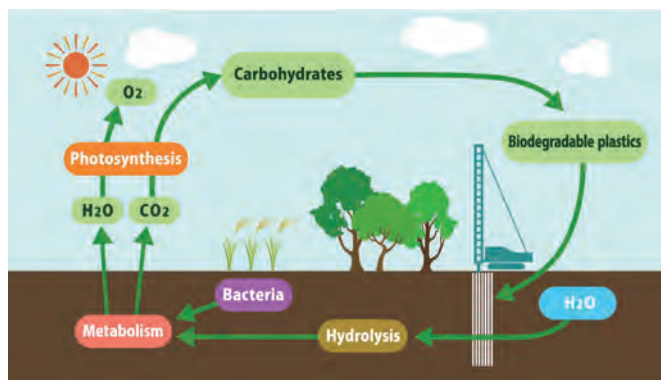


Image of biodegradation for illustration purposes.

History of eco-friendly PVD methods



Prefabricated Vertical drain, Nonal drain, and horizontal drain substituting sand blanket, BSB drain, are made with biodegradable material only. Both will biodegrade to be water and carbon dioxide after finished the ground improvement work.

Because of its biodegradable nature, Nonal drain and BSB drain can contribute to prevent environmental pollution by marine plastics and microplastics.

CHIKAMI MILTEC INC.

1-6-3 Ohtesuji, Kochi-city, Kochi, Japan 780-0842

mail:soumu@c-miltec.co.jp

<https://www.c-miltec.co.jp/english/index.html>

TEL:+81-88-822-1181 FAX:+81-88-824-5729

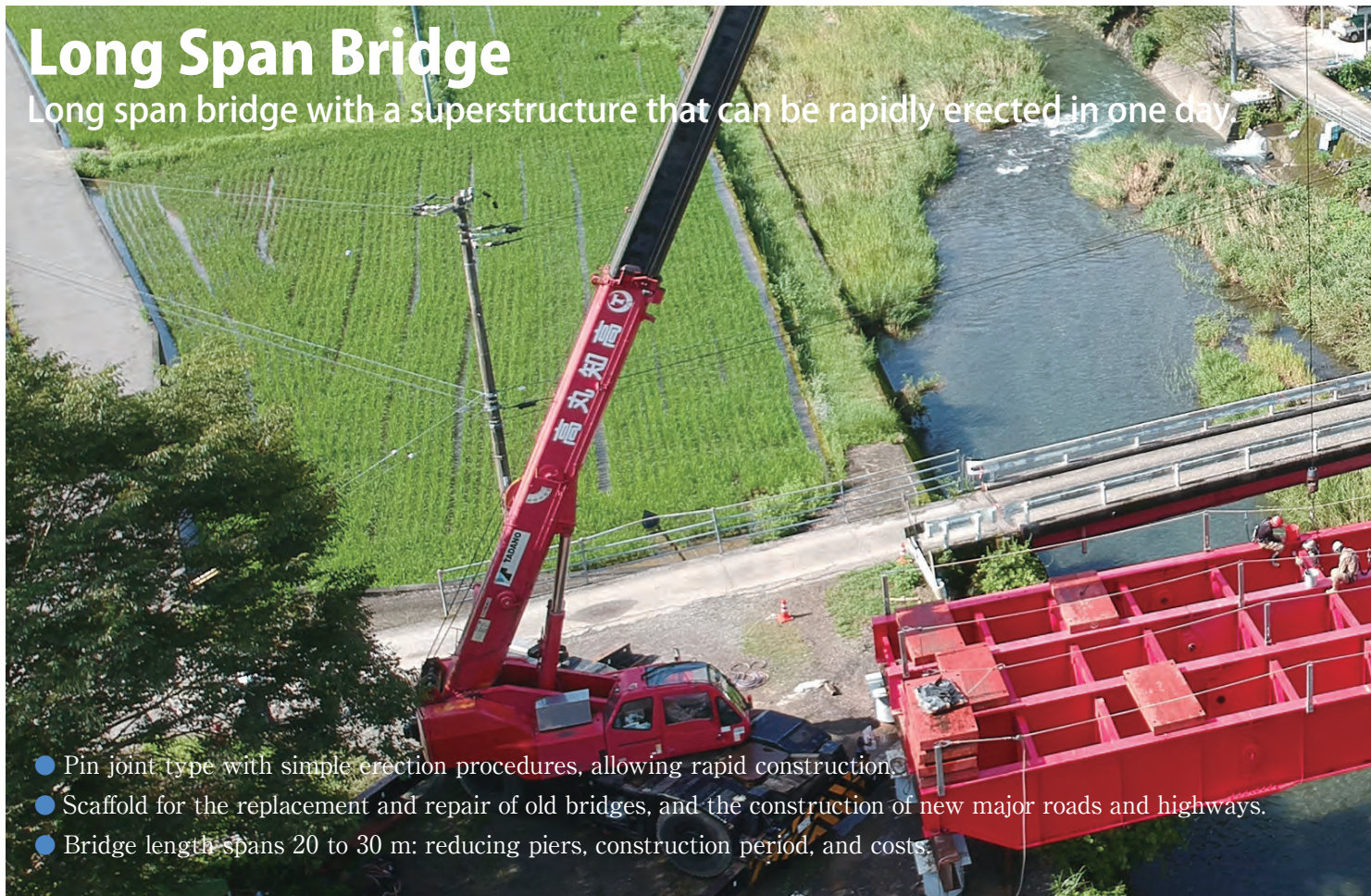


HP



Long Span Bridge

Long span bridge with a superstructure that can be rapidly erected in one day.



- Pin joint type with simple erection procedures, allowing rapid construction.
- Scaffold for the replacement and repair of old bridges, and the construction of new major roads and highways.
- Bridge length spans 20 to 30 m: reducing piers, construction period, and costs.

Comparison with Conventional Methods

■ Reduced construction time / Reduced cost

Ultra-long span leads to fewer bolts and less work time significantly.

■ Economical and efficient

Components are easily reusable, which can be used for a temporary bridge at a new location.

■ Safety

Bolts are small in number, so there are fewer issues, such as insufficient tightening torque, decreasing in tightness due to temperature changes, etc.

■ Recommended Usage Areas

Urban rivers, infrastructure repairs, urban aging recovery, mountain roads, highways, bridge rebuilding, emergency repairs.

■ Related Fields

River management, bridge management, road development, urban planning, maintenance.



Loading test



Pin connection structure



Specifications: 1 span 12 to 30 m

The length of the bridge can be adjusted by changing the intermediate span.



construction results in Fukui Pref.



bridge girder material

About us

Our Business: foundation and bridge construction, dredging, etc.

Business Overseas: Myanmar, Pakistan, Uganda, Cambodia, Philippines, etc.

Capital: 20 million yen

Number of Employees: 104

Kochi Marutaka Co.,Ltd.

12-31 Azonominami-machi, Kochi-city, Kochi, Japan 781-0014

mail:marutaka@ceres.ocn.ne.jp

<https://www.ko-marutaka.co.jp/>

TEL:+81-88-845-1510 FAX:+81- 88-846-2641



HP



River/reservoir monitoring system

35 years of experience in providing simple and long-life water level gauges powered by batteries or solar



We are professional at building monitoring systems in mountainous areas where it is difficult to secure commercial power supplies and communication infrastructure. We provide monitoring systems throughout Japan by making full use of lightweight and compact measurement devices and outdoor data transmission technology.

Achievements of water level gauge introduction: from the beginning, we participated in the innovative river management project of the Ministry of Land, Infrastructure, Transport and Tourism, which is a Japanese government agency, produced level gauges for water crisis management, and introduced them to 1,300 small and medium-sized rivers all over Japan.



Crisis management type water level gauge introduction site (in Aichi prefecture)



Reservoir monitoring system introduction site (in Kochi prefecture)



River monitoring system introduction site (in Saitama prefecture)



A remote monitoring system that enables browsing on the Internet, by sending observation data of water level and rainfall and image taken by a surveillance camera to a server.

When the water level or rainfall exceeds a certain value, it also enables to send an alarm mail to the specified address. Each device is lightweight and compact, so it is easy to install, and the thorough power-saving design allows long time operation with solar or batteries.

In addition, we have multiple combinations of measuring, communication, and alarming devices, which makes it possible to propose a system that matches the communication environment and higher-level system at the desired observation point.



Reservoir monitoring system
introduction site overseas

Landslide monitoring system
introduction site overseas



Sales overseas

In addition to water level gauges and rain gauges, we also provide measuring devices for slope disaster prevention. We have experienced exporting to more than 17 countries including Asia and Central and South America.

We have introduced a reservoir remote monitoring system. We also have introduced remote landslide monitoring systems for reducing human damage caused by serious landslide disasters in mountainous areas. Our system is customizable; we carry out everything from design and development of products and systems to manufacturing at our own factory.

We can propose systems that take into account the conditions different from country to country.

OSASI Technos, Inc.

65-3 Hongu-cho, Kochi-city, Kochi, Japan 780-0945
mail:cs@osasi.co.jp
<https://www.osasi.co.jp/en/>

TEL:+81-88-850-0535 FAX:+81-88-850-0530



HP



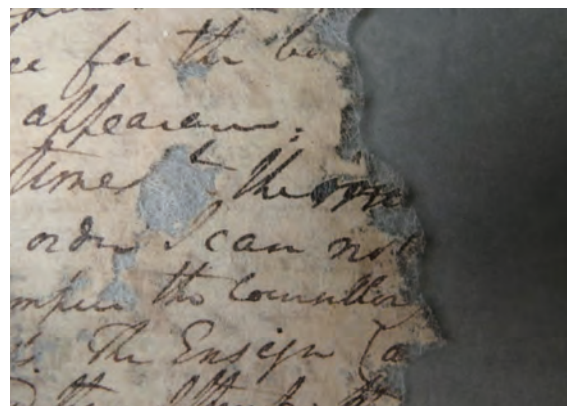
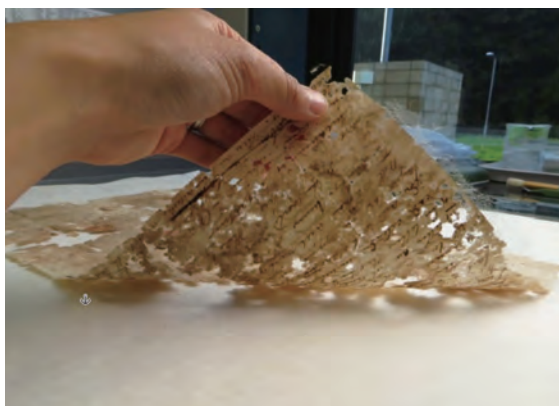
Japanese Paper, TENGUJO Paper.

The world thinnest paper TENGUJO Paper.



Tosa TENGU (a kind of washi commonly known as Tosa Tengujo-shi in Japanese) is likened to the “wings of a mayfly.” Made from high-quality kozo, it is one distinctive kind of handmade washi that is both transparent and flexible.

For restoration of old documents, and other uses that take advantage of Kozo's original fiber quality. Japanese Paper TENGU, the fibers in this variety are the strongest, and thus it is used widely for restoration purposes. Regarding the impurities that often remain on the paper surface on unbleached paper, we remove them completely by hand. Depending on where the kozo was grown or the particular processing methods, the color and feel of the paper will be different, and we feel that the unbleached character of this paper is appropriate for old documents



Product lineup

From 1.6g/m² to 110g/m²

Original color is available

We adjust our papermaking to your specific needs such as special colors, special sizes, weights, special cuts, rolls, increases in paper fitness/strength seal processing

adjustments of kozo used (by place of origin), processing methods, and pulp mixture.

Whether you require the paper to be a little tighter, a little more resilient when wet, a little softer, even while increasing the strength... we will work with you to meet your specific requirement.

We accept a variety of special orders regarding handmade and machine made Japanese paper.



INDUSTRIAL
MACHINERY

CIVIL
ENGINEERING
MACHINERY

ENVIRONMENTAL
AND BIOMASS
MACHINERY

DISASTER
PREVENTION
PRODUCT

PAPERMAKING

WOOD
PRODUCTS

OTHER
PRODUCT

Hidakawashi Co.,Ltd.

3486-1 Okina Hidaka-mura, Takaoka-gun Kochi, Japan 781-2152

mail:info@hidakawashi.com

https://www.hidakawashi.com

TEL:+81-889-24-7857 FAX:+81-889-24-7858



HP



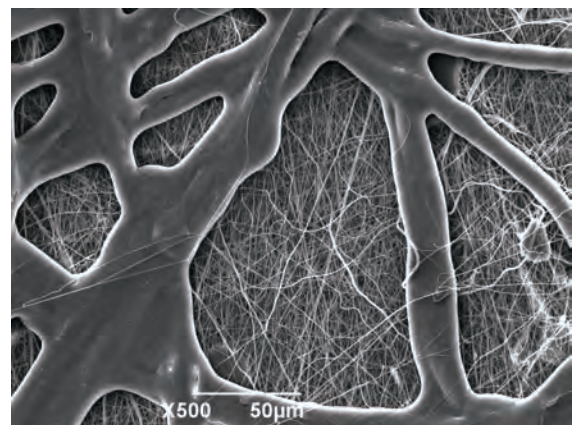
Wet-laid Non-woven Fabric (High Performance Paper)

The world's thinnest and lightest non-woven fabric/nanofiber composite non-woven fabric.

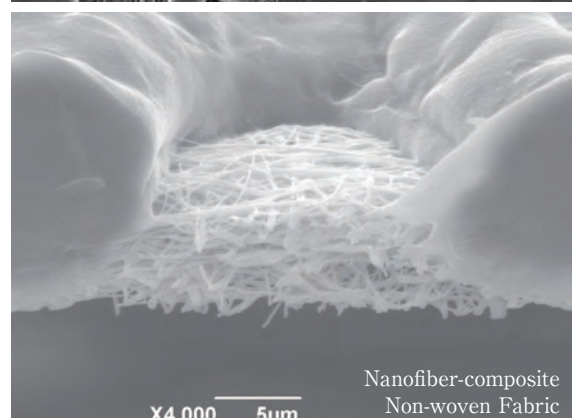


Product Lineup

- Wet-laid Non-woven Fabric Made of Vinylon
- Wet-laid Non-woven Fabric Made of Polyester
- Wet-laid Non-woven Fabric Made of Polyolefin
- Wet-laid Non-woven Fabric Made of PPS Fiber (Polyphenylene Sulfide)
- Wet-laid Non-woven Fabric Made of Polyimide
- Nanofiber-composite Non-woven Fabric
- Self-Adhesive Sheet without Glue
- Thermal Insulation Paper



Wet-laid Non-woven
Fabric Made of Polyimide



Nanofiber-composite
Non-woven Fabric

Hirose's cutting-edge paper making technology enables us to produce the world's thinnest and lightest non-woven fabric with high level of quality & homogeneity. We also can manufacture our low density wet-laid non-woven fabric with no necessity for additional processes such as heat pressing.

Our main products are made of polyester, vinylon, and polyolefin fibers.

We continue to develop new products made of high-performance fibers such as polyphenylene sulfide, aramid, polyimide, and carbon fibers. Additionally, we have our own unique spinning technology which enables us to produce nanofiber-composite non-woven fabrics.

Applications

- Battery Separator
- Leading Paper
- Tape Base Material
- Base Material for Electromagnetic Wave Shielding
- Substrate for Membrane
- Spacer
- Base Material for Printing
- Air Filter
- Thermal Insulation Material



Battery Separator



Thermal Insulation Paper

Hirose Paper Mfg Co.,Ltd.

3292-1 Otsu, Takaoka-cho, Tosa-city, Kochi, Japan 781-1102
 mail:sales@hirose-paper-mfg.co.jp
<https://www.hirose-paper-mfg.co.jp/english/>

TEL:+81-88-852-7771 FAX:+81-88-852-7773



HP



Laminated Japanese Washi Mask Case

This is a beautiful mask case made of Japanese paper (Washi) making with a falling water pattern technique that can be fabricated only by us.



This is a durable mask case by laminating polypropylene on Japanese paper, which can be used repeatedly. The unique texture of Japanese paper and the beauty of the delicate pattern give you a high-quality feeling that is not realized in printing. An antibacterial coat is applied to the inside of polypropylene to maintain cleanliness.



Unlike a simple disposable case, it can be used repeatedly.

Therefore, it is ideal as a practical and frequently-used novelty.

In addition, it has been introduced as an amenity in many high-class inns and hotels; from 100 sheets, it can be put a name on it using foil stamping. (Custom colors and patterns are available)

Movie
"MORISA Washi Wrapping"



Youtube

■ Mask case / hard type (paper + PP bonded)

Product CD : MC200-SI

Size: 200*125 mm (Folded 2 pockets)

Material: Cloisonne pattern Japanese paper (Mixture: rayon/pulp) +PE15 μ m + PP#200

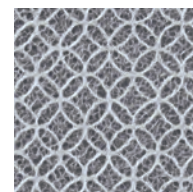
Color: white

Pattern: SHIPPO (overlapping circles)

Shipping: from 100 sheets

Name stamping: Foil stamping from 100 sheets (Foil plate fee is charged separately)

We have received an order from Kochi Prefecture Tourism Convention Association for overseas promotion.



■ Mask case / soft type (made of paper)

Product CD : MC-035-KA

Size: 210*115 mm (Folded 1 pocket with an antibacterial inner sheet)

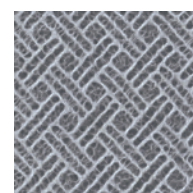
Material: Polyester pulp (inner sheet: pulp)

Color: white

Pattern: KAGOME (basket mesh)

Shipping: from 100 sheets

Name stamping: Foil stamping from 100 sheets (Foil plate fee is charged separately)



MORISA CO.,LTD.

218-1 Takaoka-cho Otsu, Tosa-city, Kochi, Japan 781-1102
mail:info@morisa.jp
https://www.morisa.jp/

TEL:+81-88-852-1177 FAX:+81-88-852-6622



HP



Paper wipes

Paper wipes that outperform cloth wipes: fast absorption speed and no lint.

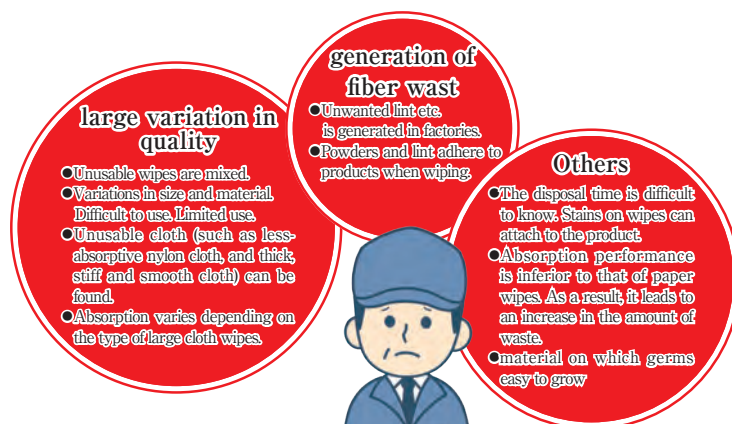


They are sheets made by pressure bonding and embossing, and their absorption speed is high. Even if they get wet with water, they wipe off dirt strongly and firmly.

Characteristics

- The fine asperity scrapes off dirt and increases the area that absorbs water and oil.
- A large amount of dirt in water or oil is quickly absorbed. Unlike cloth wipes, they are lint-free.
- They are supple and strong even if they get wet, and very convenient.
- Because of little fluffing, little paper dust and little static electricity generation, they can be used safely at manufacturing sites and food factories.
- Because of embossed thick 4 layers and no adhesive, they wipe off stubborn stains.
- Unlike cloth, paper breaks easily, so accidents being pulled into machines are preventable.
- They are disposable, hygienic and safe.
- They are made of synthetic fiber-free 100% natural pulp fiber and recyclable. They generate no pollutant such as dioxins during incineration.

disadvantages of recycled cloth wipes

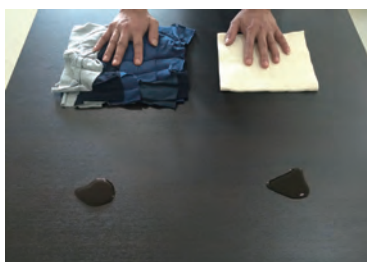


advantages of paper wipes



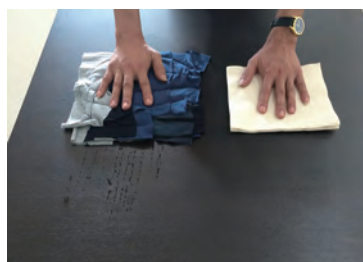
Recycled cloth wipes and our paper wipes Wiping test using 4-ply products

1



Wiping test is performed against liquid droplets on a desk for comparison between recycled cloth wipes and our paper wipes.

2



Both wipes are put on the droplets and wipe them immediately.

3



The recycled cloth wipes have inferior absorption performance and do not wipe well, and consequently the droplets spread on the desk.

4



Our paper wipes have superior absorption performance and wipe them perfectly.

Product lineup



	Paper Wipes Clean	Paper Wipes Clean	Paper Wipes Clean (BOX) for business
standard	4-ply 50 sets	3-ply 50 sets	4-ply 50 sets
sheet size	380mm*330mm	340mm*330mm	380mm*330mm
number of sheets in the case	24	24	24
product size	190*165*120mm (510g)	170*165*100mm (337g)	190*165*120mm (510g)
way of folding	fold in four	fold in four	Z fold
case size	690*400*430mm	690*370*360mm	720*410*495mm

Wako Paper Co.,Ltd.

3936 Ino-cho Agawa-gun, Kochi, Japan 781-2110
 mail:info@wako-seishi.jp
 http://wako-seishi.jp/

TEL:+81-88-892-1144 FAX:+81-88-893-3636



HP



INDUSTRIAL
MACHINERY

CIVIL
ENGINEERING
MACHINERY

ENVIRONMENTAL
AND BIOMASS
MACHINERY

DISASTER
PREVENTION
PRODUCT

PAPERMAKING

WOOD
PRODUCTS

OTHER
PRODUCT

Wood packing (MOKUMEN)

Real SDGs Number one share in Japan "The last MOKUMEN shop in Japan"



Toda Shoko grows with forests, regions and cooperators.

T O D A  S H O K O

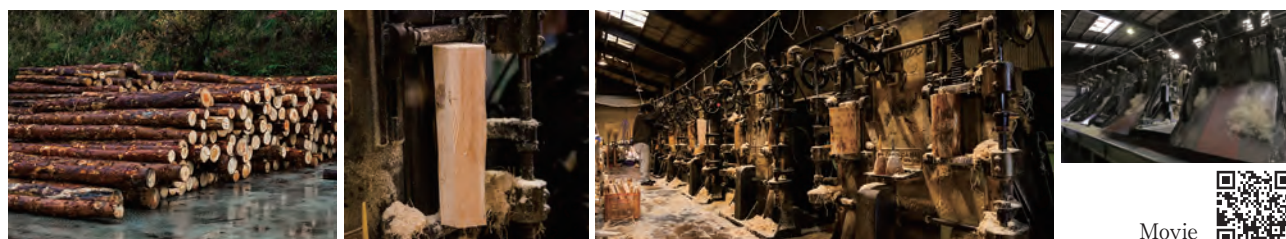
MOKUMEN is a natural cushioning material made of thinly shaved wood, and is also referred to as wood packing. MOKUMEN is made from natural wood produced in Japan and manufactured in a 100% recyclable process that does not produce waste wood, and is used as a cushioning material for fruits and vegetables and cosmetics because of its excellent moisture absorption and desorption properties.

In addition to cushioning, MOKUMEN also plays an important role in enhancing water retention, moisturization, and erosion prevention, and is used by many gift vendors. By using MOKUMEN, it is possible to give products a sense of class, elegance, and express the warmth and love of the producer. It has also been widely used for many years as a packing material for Japanese dolls and stuffed toys. We still receive many orders from many doll makers today.



Manufacturing process

We use pine, cypress, camphorwood, and cedar logs from Kochi Prefecture. We peel the wood, saw it, and cut it further to the width set on the machine. A knife-shaped cutter and a saw-shaped cutter are set in the MOKUMEN making machine, and by slicing the wood, the dragon's whisker-shaped MOKUMEN are scraped off. It has been exported to South Korea and Vietnam as a raw material for bed manufacturing.



Movie



Product introduction

There are four types of MOKUMEN including pine, cypress, camphor, and cedar.

Pine and cypress are used as cushioning materials, cedar is used as a raw material for vegetation sheets, and camphor is used as a raw material for items such as shoe keepers. Three sizes are available in different widths and thicknesses.

Aroma sachets for shoe keepers and shoe boxes using camphorwood MOKUMEN

A shoe keeper that uses 100% camphorwood, which has been known for a long time as an insect repellent and the effect of protecting important clothing. Wrapped in water-resistant Tosa Japanese paper, it has excellent deodorant and hygroscopic effects.



Aroma sheets and aroma sachets for wardrobes using Japanese cypress MOKUMEN

This product is born from the unique relaxing properties, fragrance, excellent air permeability, and moisture absorbency and wicking properties of hinoki cypress. It is also wrapped in water-resistant Tosa washi paper.



TODASHOKO Co.,Ltd

580 Honmura Tosa-city, Kochi, Japan 781-1122
mail: info@toda-shoko.co.jp
<https://toda-shoko.com>

TEL:+81-88-855-0426 FAX:+81-88-855-1278



HP



INDUSTRIAL
MACHINERY

CIVIL
ENGINEERING
MACHINERY

ENVIRONMENTAL
AND BIOMASS
MACHINERY

DISASTER
PREVENTION
PRODUCT

PAPERMAKING

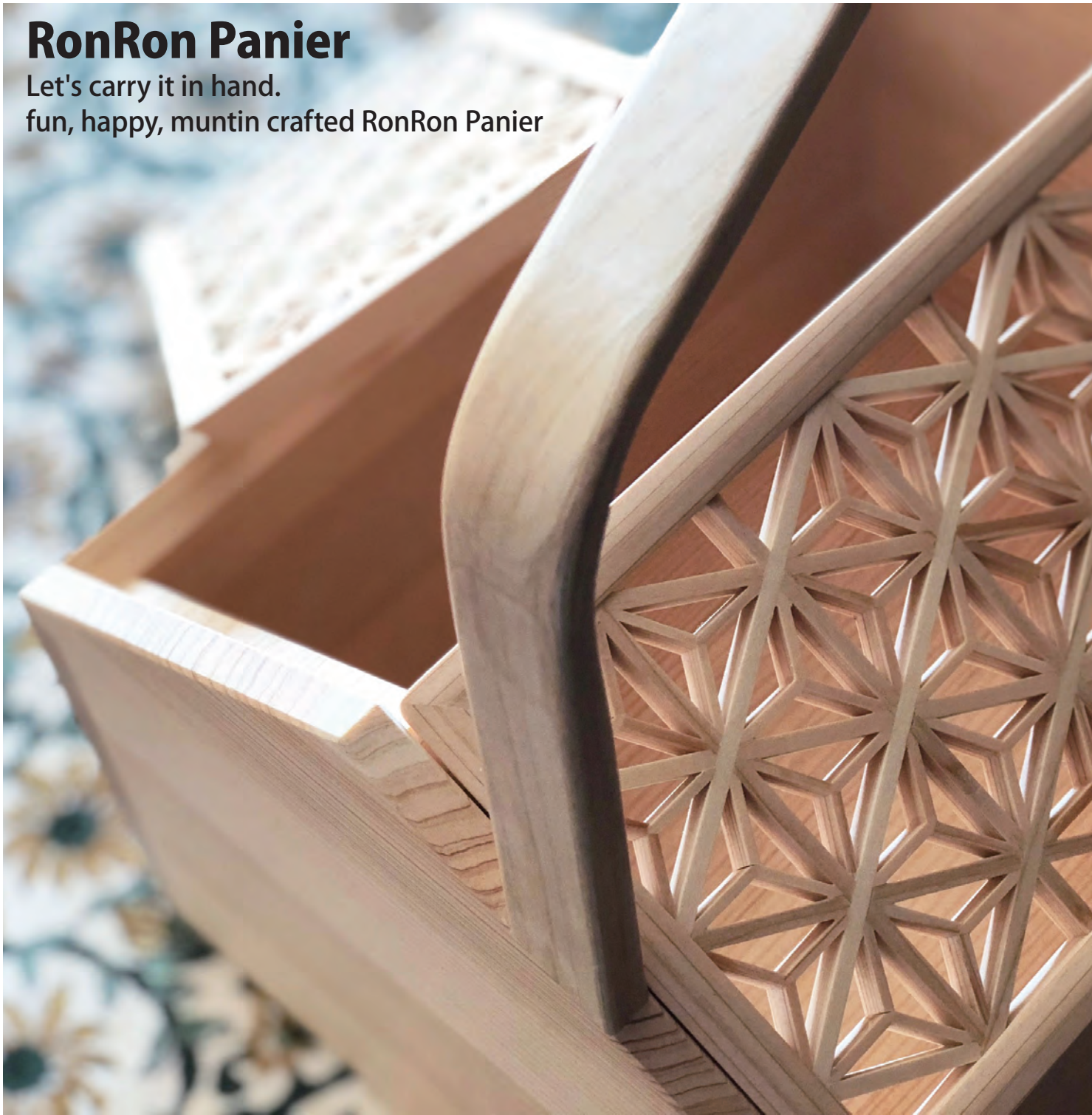
WOOD
PRODUCTS

OTHER
PRODUCT

RonRon Panier

Let's carry it in hand.

fun, happy, muntin crafted RonRon Panier



RonRon Panier has a hemp leaf pattern muntin craft on the lid. It can be used as a tray with the lid removed. For outdoor use, you can put a lunch box or tea set in it and use it at picnic or camping. For indoor use, it can be used as a storage for your favorite things. It is a cute wooden pannier with a slanted handle.

various ways to use RonRon Pannier.

They are muntin crafted products that incorporate casual elements into traditional Japanese patterns. For example, overseas guests staying at hotels in Kyoto and Tokyo use them as containers for sweets and tea sets when taking a walk around the hotels. Ryokan and hotels change their size and used them as amenity containers.

product name: RonRon Panier

usage: wooden basket

material: Japanese cypress

outer size: 240W * 190D * from 115 to 170H

inner size: 205W * 170D * from 100 to 150H

lid tray: 225W * 107D



Tosakumiko Co.,Ltd.

80-1 Nishibun Haruno-cho, Kochi-city, Kochi, Japan 781-0304

mail:info@tosakumiko.jp

https://tosakumiko.jp

TEL:+81-88-879-6246 FAX:+81-88-850-3082



HP



INDUSTRIAL
MACHINERY

CIVIL
ENGINEERING
MACHINERY

ENVIRONMENTAL
AND BIOMASS
MACHINERY

DISASTER
PREVENTION
PRODUCT

PAPERMAKING

WOOD
PRODUCTS

OTHER
PRODUCT

JAPANESE SPA

100% Natural Forest Thinning Eco-friendly Hinoki Product



Item# : JC-67

Size: 120×45×245mm
(4.72"×1.77"×9.65")

*contains 2 bags (1bag:22g)

Hinoki products of TOSARYU are made from aromatic Japanese Hinoki cypress which is a natural by-product of the forest thinning process. Hinoki wood is prized in Japan for its appealing, bracing scent. JAPANESE SPA is an environmentally friendly product which is made entirely from recovered by-product of the Hinoki wood manufacturing process of TOSARYU.



JAPANESE SPA contains a highly aromatic Japanese wood called "Hinoki".

The Hinoki wood will bring a natural and pleasant citrus scent to your bathroom.

Drop into your bath or hot tub and treat your senses to the calming and rejuvenating effects of a "bask" in a Japanese forest.

Related Products

Aromatic Bath Mat

#HH-1005-M



#HH-1006-L

#HH-1004-S

Made of the aromatic Japanese "Hinoki" cypress which contains antibacterial resins. Place it on the floor of bathroom, shower room or private sauna.

Item#:HH-1004-S

Size: 260×450×20mm
(10.24"×17.72"×0.79")

Item#: HH-1005-M

Size: 350×450×20mm
(13.78"×17.72"×0.79")

Item# HH-1006-L

Size: 350×600×20mm
(13.78"×23.62"×0.79")

TOSARYU CO.,LTD.

2830 Higashibun Uranouchi, Susaki-city, Kochi, Japan 785-0163

Email:hinoki@tosaryu.com

http://www.tosaryu.com

TEL:+81-889-49-0111 FAX:+81-889-49-0049



HP



Mass Flow Controller C2000 series

Compact Digital Mass Flow Controller (with CE)



Mass flow controllers control gas flow rate by measuring it automatically.

There is no need to make a correction due to changes in factors such as the environmental temperature and operating pressure, which makes this controller capable of accurate and stable measurement and control.

【C2000 series Mass Flow Controller】

- Compact Mass Flow Controller with power supply.
- Easy operation
- Can be controlled by a PC with application software

【Gas Mixer】

We manufacture a gas mixer equipped with a mass flow controller. In addition to standard products, it can be customized according to your needs and budget.



Gas Mixer: CUBE GM-X



MFC + PA01PS

【Mass Flow Controller & Power Supply】

- It is an analog model specializing the basic function of the Mass Flow Controller.

【CUBEMFC】

- Analog compact model: control unit integrated with power supply.



CUBEMFC

FCON CO.,LTD.

1-1-1-109 Hotarugaoka, Nankoku-city, Kochi, Japan 783-0060
 mail:contact@fcon-inc.jp
<http://www.fcon-inc.jp/en/index.html>

TEL:+81-88-855-7100 FAX:+81-88-855-7166



HP

FCON
 Creation of New Value

Organic Gauze Blanket

8-layers gauze blanket made of 100% organic cotton, certified to GOTS (Global Organic Textile Standard).



It can be used in all seasons.

You can use it alone in the warm season or in combination with a comforter in the cold season.

It is also ideal for a lap blanket in the living room.

We do not use toxic chemicals and do not detect formaldehyde at our factory, so our products are harmless even if you put them in your mouth. Therefore, it can be used with confidence for newborn babies, too.



Size: 130 × 190cm

Material: Cotton100% (Organic Cotton 100%)

Color: undyed

Certification: GOTS (Global Organic Textile Standard)

Put it in the laundry net and machine wash it softly.

Do not tumble-dry it.

It becomes fluffy and soft every time you wash it.

Sold at department stores and Consumers' Co-operative Union nationwide, with 1,000 sheets sold in six months.

It is a non-fluorescent, unbleached, undyed 8-layer gauze blanket that complies with the Global Organic Textile Standards (GOTS), eliminates harmful chemicals and uses only cotton yarn including sewing threads.

From twisting yarns to manufacturing and shipping, everything is done at a certified organic factory in Japan.

It is a valuable blanket that requires a lot of manual work and can be produced only 10 pieces a day. Cotton threads are susceptible to weather and humidity. Therefore, the craftsmen's "sense" and "skill" are required. Our experienced sewing specialists spend a lot of time and effort to carefully manufacture these products.

The gauze is not only layered, but also woven into 8 layers with a lot of threads using a three-dimensional weaving technique, so it contains a lot of air and has high heat retention. At the same time, because it uses natural cotton, it is highly breathable and comfortable without feeling moisture.

Heart promotes ethical manufacturing that does not impact the environment for the next generation.



Cross section of 8-layer gauze blanket

Heart Co.,Ltd.

4-18 Kitakanada Kochi-city, Kochi, Japan 781-0073

mail:heart@heart-kochi.jp

<https://www.heart-kochi.jp/en/>

TEL:+81-88-882-4788 FAX:+81-88-882-4822



HP



Youtube



1919-2023 **104th**
HOKIYAMA

土佐一影

Tosa-Ichi Shadow

Nashiji Black
Aogami Super/405 stainless clad

HOKIYAMA has produced a wide variety of kitchen knives in its more than 100-year history, based on its core technology, the original clad forging method. Since the 21st century, as Japanese cuisine has spread around the world, our knives have attracted top chefs as high-quality tools to support this trend. They are currently sold in more than 35 countries and continue to attract many users with their functional beauty and keen sharpness.

影と光

土佐一輝

Tosa-Ichi Bright

Tsuchime Bright
Aogami Super/405 stainless clad

Shadows
&
Lights

Handle Colors



Black



Dark Brown



Wine

土佐一影

Tosa-Ichi Shadow

Tsuchime Black
Aogami Super/405 stainless clad

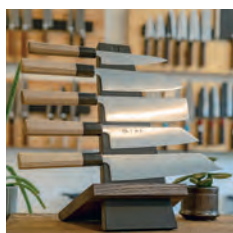
左近銀雅

SAKON Ginga

Nashiji Bright
Gingami 3/405 stainless clad

The Knives, long-selling & the professional's favorites

Voices on the world street corner



SHARP KNIFE SHOP (CANADA)
<https://sharpknifeshop.com/>

▶ Mr. G. Corlett
talks about
Hokiyama



Voice of up-and-coming retailer

"SHARP knife shop" is honored to have the opportunity to offer the beautiful products Hokiyama cutlery produces to our customers. Hokiyama Cutlery's commitment to making excellent kitchen knives can be seen in every blade and felt in every cut.

Every person that comes into our shop is different and has specific needs; the wide range of cutlery offered by Hokiyama makes it easy for us to find that perfect blade for each and every customer we service, whether they are a home cook or professional.

Equally as important, we as a customer of Hokiyama Cutlery are always impressed by their level of customer service.

They make us feel like a member of their extended Family and we are always excited to visit them!

Gage Corlett
Sharp Knife Shop
Hamilton, ON, Canada



"Sharpness & Grip Balance" Professional's Feedback

Came to Germany 31 years ago, and have been running a Japanese restaurant independently for 21 years in Munich, I mainly cook "Sushi" & "Teppan-yaki" and have been working on establishing Japanese cuisine culture here. Previously, I used German knives which are so famous in excellent quality. Nowadays, almost all knives in our kitchen are made in Japan. The first impression of using SAKON+ was its keen sharpness. It is so amazing that the blade can manage not only fish meat slicing but also delicate vegetable decorative cutting. I was also surprised that SAKON+ keeps keen sharpness even after long use. This is obviously an outstanding feature but another hidden point is the excellent balance of blade & handle when I grip it in my hand. I cannot cook without this knife anymore.

TOSHI Restaurant & Bar
owner chef / Inhaber Koch : Toshi Kobatake
<https://www.toshi-muenchen.de/>

SAKON+ "SAKON Plus" where craftsmanship meets aeronautical technology Vee-Tech®

SAKON+ INQUIRY (EU countries)
<https://sakon-infini.com/>
<https://sakon-infini.eu/>

PETTY / 135mm
1713-02



SANTOKU / 180mm
1711-02



CHEF'S KNIFE / 210mm
1712-02



Vivid-edge-effect-tech processed blade

▶ SAKON+
technology
detailed video



HOKIYAMA CUTLERY CO.,LTD.

Quality Knives & Fine Cutting Tools Since 1919

3-15 Sakaemachi Tosayamadacho Kami-city Kochi, Japan 782-0039

mail:info@hokiyama.com

www.hokiyama.com/global

TEL:+81-887-53-5111 FAX:+81-887-53-5115



HP



INDUSTRIAL
MACHINERY

CIVIL
ENGINEERING
MACHINERY

ENVIRONMENTAL
AND BIOMASS
MACHINERY

DISASTER
PREVENTION
PRODUCT

PAPERMAKING

WOOD
PRODUCTS

OTHER
PRODUCT

IC Bordeaux(Copper fungicide)

Safe and secure, No.1 Japanese Fungicide!



IC Bordeaux is a copper fungicide, the copper compound, the same as "Bordeaux Mixture" made from lime and copper sulfate. It is an agricultural chemical that reduces the time for making by hand and is easy to use, i.e. an environmentally-friendly fungicide for killing pathogenic microbes on fruit trees and vegetables. Effective ingredients are inorganic substances, so there are no concerns about drug-resistant bacteria. It has excellent adhesiveness and resistance to rain, so its protection and bactericidal effects keep long.

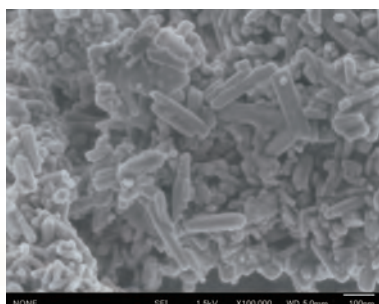
It has been regularly used for 27 years in more than 30 farm products such as grape, citrus, peach, apple and tomato, so its safety and high effectiveness have been firmly proven.

The quality of IC Bordeaux is also appreciated for farm products in Korea, China, Taiwan, Vietnam and Thailand.

In addition, IC Bordeaux has a repellent effect on snails, slugs and fruit flies. After spraying, you can see at a glance the part that is not sprayed because it stands out white.

META-Z (Active zinc oxide) for rubber

Making your product's characteristics incredible!



META-Z is specialized active Zinc oxide which accelerates vulcanization rubber.

META-Z makes your rubber stronger and better workability.

META-Z is a fine particle whose surface area is larger than other general ZnO. Therefore, activation is faster. In addition, vulcanization density is high because of fine particle, and Compression Set of rubber is grater.



MAC

MAC is calcium soap, one of metallic soap. Lubricating fluid for drawing special steels wires. Compare to other calcium soap, MAC increases the workability of drawing because of its membrane homogeneous.

Fermented Chicken Dropping Pellet Fertilizer

This product is made using an environmentally friendly composting promotion system, and safe because it is completely fermented.

This product is most suitable not only for original fertilizer, but also as a fertilizer and soil improvement material. In addition, its gentle persistence activates microbial groups and enhances production of healthy crops.



TOYOWHITE

This is high purity calcium carbonate(CaCO_3). TOYOWHITE is used as calcium supplement for a lot of foods such as proteins, chocolate, biscuits, instant noodles, baby foods, and so on.

High purity (98.0% or more!)

High whiteness

Small amount of heavy metal (below 3 ppm of Lead)

HALAL certified product

INOUE CALCIUM CORPORATION

2-3-5, Hotarugaoka, Nankoku-city, Kochi, Japan 783-0060
mail:international-sales@inoue-calcium.co.jp
http://inoue-calcium.co.jp

TEL:+81-88-855-9975 FAX:+81-88-880-8808



HP



Pan Oishii Mama

A bag developed to preserve bread while keeping it tasty



"Pan Oishii Mama" is a bag specially designed for bread to keep it fresh and preserve its quality and flavor. Simply place the bread in the bag and freeze it to keep it tasty in your freezer at home. If used at room temperature, it can preserve bread hygienically with minimal flavor degradation. This technology is also being deployed for commercial use and is being used by many well-known bakeries.

How to use



The flavor of bread deteriorates within a few to 24 hours after it is freshly baked. If you don't properly store the bread you bought, you won't be able to keep it delicious. Our bags are convenient and useful for keeping bread tasty at home. Bread will last longer if frozen, but it is difficult to keep it tasty in freezers at home because they are frequently opened and closed, and because of the transfer of odors from other ingredients. When "Pan Oishii Mama" is used, it can preserve the flavor of the bread and keep it tasty for about a month.

Characteristics

- Effective for various types of bread that can be frozen.
- Especially effective for preserving freshly baked and fragrant bread.
- You can enjoy delicious bread without re-baking, by naturally thawing them in the bag.
- You can use them repeatedly, if you use them cleanly.
- Storage in our bags makes it harder for mold to grow on bread at room temperature.

Room temperature storage test

- This is a photo of bread stored for 14 days, using ordinary plastic bags and "Pan Oishii Mama".
- To preserve the taste, frozen storage is recommended instead of storing in room temperature.
- There are differences in the effect depending on the conditions.
- The details of the test can be found on our website.
- To strictly observe the expiration date of the bread.



Normal Plastic Bag

Keep Bread Fresh and Delicious

movie



Product specifications

■ Package size

Length: 265mm, width: 120mm, thickness: 20mm

■ Bag

Raw resin: PET

Cool tolerance: -30℃

Large size: Length: 420mm, width: 300mm, thickness: 0.013mm Quantity: 3

Small size: Length: 300mm, width: 210mm, thickness: 0.013mm Quantity: 5

■ Clip (both large size and small size)

Raw resin: PP heat resistant temperature: 120℃

Cool tolerance: -20℃

Quantity: 3

■ Country of production

Japan

Overseas sales track record

We have received an order from a French distributor.



large size



small size

KINOUSOZAI CO.,LTD.

6-13 Nijudai-cho, Kochi-city, Kochi, Japan 780-0843

mail:info@kinousozai.co.jp

https://kinousozai.co.jp/

TEL:+81-88-822-8197 FAX:+81-88-823-6137



HP



Dental material manufacturer, YAMAKIN Co.,Ltd.

Advanced dental materials and industrial precious metal materials



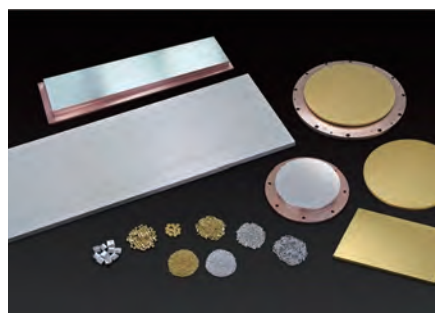
Realizing clinical needs

YAMAKIN has realized outstanding lineups by linking the needs of clinics to research and development with innovative and detailed ideas.

We timely respond to the dentistry technology advanced rapidly in recent years.

We continuously release digitally processed materials and materials that are used in the oral cavity.

We have confirmed that they contribute to the development of medical care.



Manufacturing high quality precious metal materials for various application

Utilizing the industrial precious metal processing and refining technologies that we have accumulated so far, we are expanding the technology for electronic materials and developing functional alloys for semiconductors.

■ Precious metal material for vapor deposition

Precious metal materials for vapor deposition are used in semiconductors, electronic components, various displays, etc. High purity and uniform shape are required, so we are particular about quality in manufacturing products.

We can customize the size and composition.

《sputtering material》

By our special control technology, we provide high-quality materials whose surface structure and shape suitable for "sputtering." "Sputtering" is a method in which plasma-generated atoms are applied to a target material and rebounded atoms and molecules are deposited to the substrate.



Spreading information from our own studio

We have introduced special equipment, and our staff handles everything from planning to demonstration, shooting, and distribution, and spread useful information to our customers. The plans are examined step by step, and contents such as product usage explanations, technical FAQs, and various service introductions are distributed.



YAMAKIN CO.,LTD.

1090-3 Ootani Kamibun, Kagami-cho, Konan-city, Kochi, Japan
781-5451

mail:contact@yamakin-gold.co.jp
<https://www.yamakin-global.com/>

TEL:+81-887-55-0281 FAX:+81-887-55-0018

創業70周年に向けて

70

FOUNDATION III

変化は決して発展を伴わないが、
発展は変化なしにはありえない。



HP

YAMAKIN

INDUSTRIAL
MACHINERY

CIVIL
ENGINEERING
MACHINERY

ENVIRONMENTAL
AND BIOMASS
MACHINERY

DISASTER
PREVENTION
PRODUCT

PAPERMAKING

WOOD
PRODUCTS

OTHER
PRODUCT

INDEX

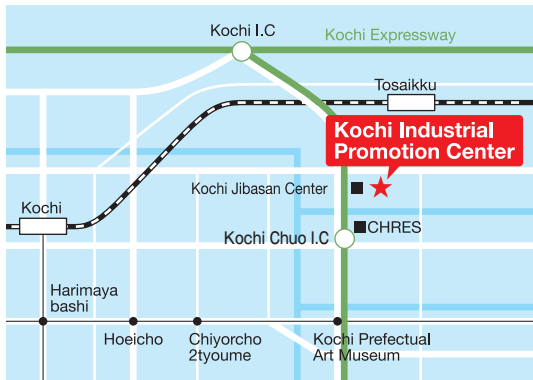
Company Index

A	Aqua System Co., Ltd.	16-17
C	CHIKAMI MILTEC INC.	22-23
F	FCON CO., LTD.	42-43
G	GIKEN LTD.	12-13
H	Heart Co., Ltd.	44-45
	Hidakawashi Co., Ltd.	28-29
	Hirose Paper Mfg. Co.,Ltd.	30-31
	HOKIYAMA CUTLERY CO., LTD.	46-47
I	INOUE CALCIUM CORPORATION	48-49
K	Kakiuchi Co., Ltd.	18-19
	KINOUSOZAI CO., LTD.	50-51
	Kochi Marutaka Co., Ltd.	24-25
	KOWATEC Co., Ltd.	20-21
M	MORISA CO., LTD.	32-33
O	OSASI Technos, Inc.	26-27
S	Saibara Ironworks Co., Ltd	2-3
	SKK Corporation	14-15
T	TODASHOKO Co., Ltd	36-37
	TOSADENSHI Inc.	4-5
	Tosakumiko Co., Ltd.	38-39
	TOSARYU CO., LTD.	40-41
U	UETA ELECTRIC CO., LTD	6-7
	UJIDEN CHEMICAL INDUSTRY CO., LTD	8-9
W	Wako Paper Co., Ltd.	34-35
Y	YAMAKIN CO., LTD.	52-53
	YAMASAKI GIKEN CO., LTD.	10-11

Offices

Kochi Industrial Promotion Center

3992-2 Nunoshida, Kochi-city, Kochi, Japan
Phone **+81-88-845-6600**



Tokyo Marketing Headquarters

(Trade Coordinator - Tokyo representative)

room802,8F Uchisaiwaicho Daibiru Building
1-3-3 Uchisaiwai-cho Chiyoda-ku, Tokyo, Japan
Phone **+81-3-6452-8830**



Osaka Marketing Headquarters

(Trade Coordinator - Osaka representative)

1F, Senba Central Bldg.
2-6-8, Honmachi, Chuo-ku, Osaka, Japan
(Kochi Prefecture Osaka Office)
Phone **+81-6-4708-3398**



Nagoya Office

(Trade Coordinator - Nagoya office)

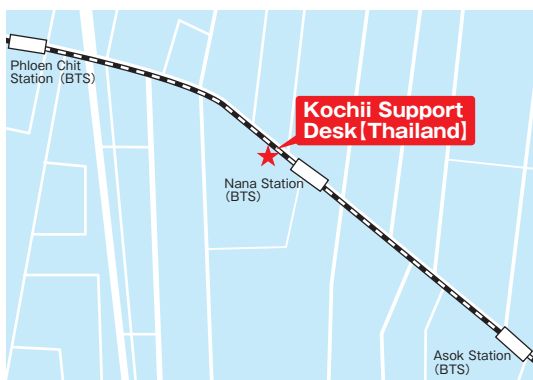
Room 803, 8F, Sakae Members Office
4-16-18, Sakae, Naka-ku, Nagoya-shi, Aichi, Japan
Phone **+81-52-684-4904**



Overseas Offices

KOCHII SUPPORT DESK [Thailand]

No. 142 Two Pacific Place, 11th Floor, Unit 1102,
Sukhumvit Road, Klongtoey, Klongtoey,
Bangkok 10110 Thailand
Phone **+66-2-254-1801**



KOCHII SUPPORT DESK [Vietnam]

Hoang Hoa Tham Street, No. 444,
Machinco Building 14th floor,
Tay Ho District, Hanoi, Vietnam
Phone **+84-24-3719-2826**



